

TIMKEN

SPHERICAL ROLLER BEARING SOLID BLOCK HOUSED UNIT

MULTI-POINT SEALING SYSTEM

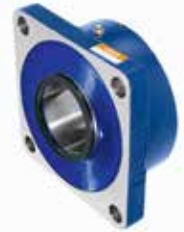
Unrivalled Protection to Help Keep Your Equipment Running – Even in the Toughest Conditions

URETHANE BACKING PLATES

Made from structural urethane and uniquely designed to work with our flange and piloted flange blocks. These backing plates provide an extra barrier for secondary sealing from the back side of the housing.



Piloted flange backing plate with triple-lip contact seal



Square flange backing plate with V-ring Nitrile rubber seal

STEEL BACKING PLATES

Made from mild steel and designed to work with our set screw and eccentric locking square flange blocks; these backing plates use dual Teflon® seals to eliminate contamination into the flange side of the housing.



Square flange backing plate with dual Teflon® seals featuring metric and imperial withdrawal holes



Square flange backing plate with dual Teflon® seals

URETHANE SECONDARY COVERS

Made for harsh operating environments, the urethane cover performs without rusting and cushions impact from debris.



Open end cover with triple-lip contact seal for accommodating misalignment while maintaining positive sealing



Closed end cover completely seals the bearing to prevent contamination

STEEL SECONDARY COVERS

Made from black oxide treated steel for improved corrosion protection, these covers are outfitted with grease fitting to fill the cover cavity with grease for an added barrier.



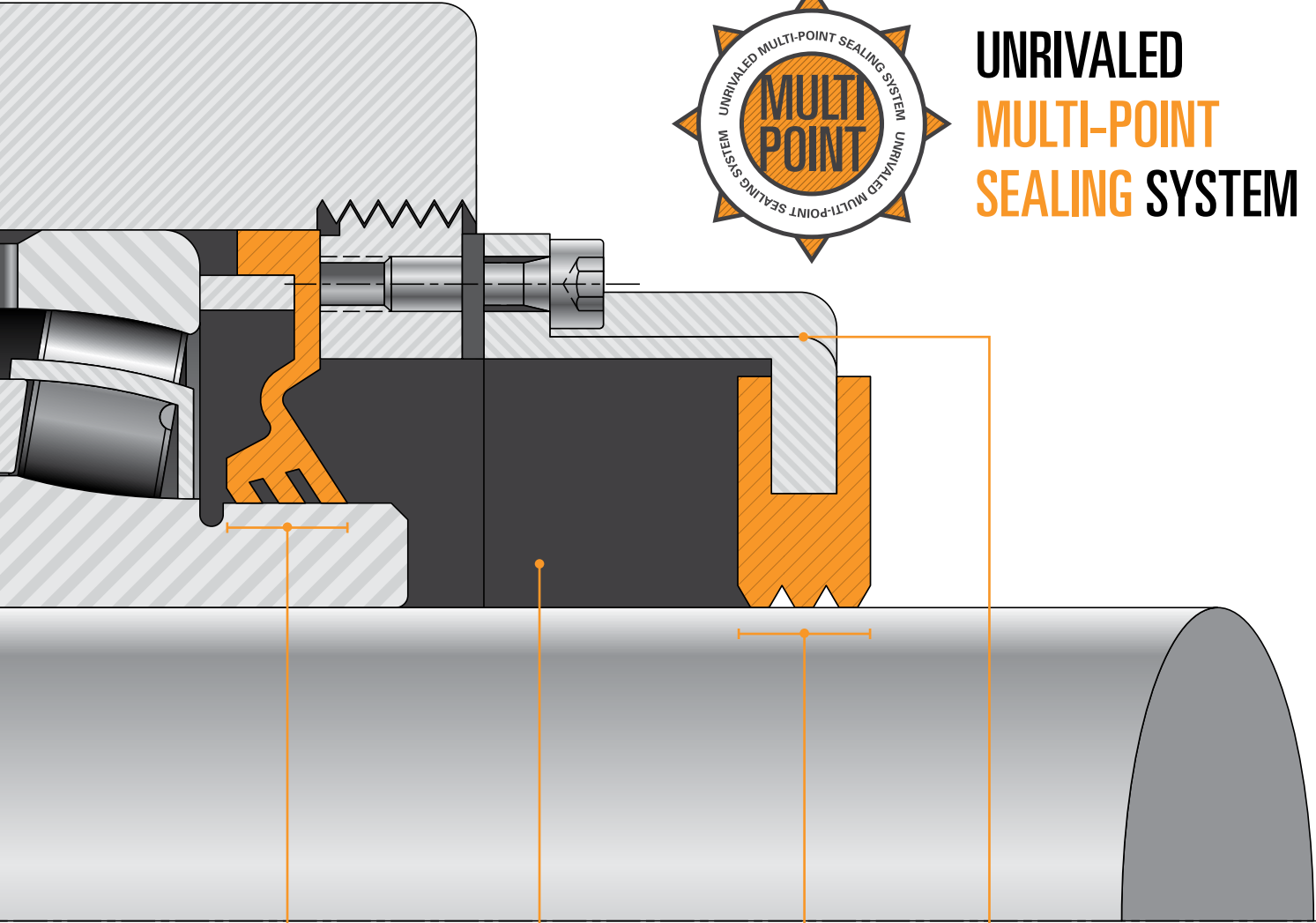
Open end cover Teflon® sealed for applications running at high speeds and increased temperature



Closed end cover protects the primary seal premature failure due to debris ingress



UNRIVALED MULTI-POINT SEALING SYSTEM



Triple lip internal seal (rubber, viton, or urethane)	Full grease pack in cover (all covers have grease zerks)	Triple lip external rubber through shaft seal*	External through shaft cover (urethane or steel)	8			
3	+	1	+		3	+	1

*steel has single lip Teflon seal for 6 point sealing

TIMKEN

The Timken team applies their know-how to improve the reliability and performance of machinery in diverse markets worldwide. The company designs, makes and markets bearings, gear drives, automated lubrication systems, belts, brakes, clutches, chain, couplings, linear motion products and related industrial motion rebuild and repair services.

Stronger. By Design.

www.timken.com