

# TIMKEN® INSTA-TOOL® FOR EASY AND ACCURATE SEAL INSTALLATION

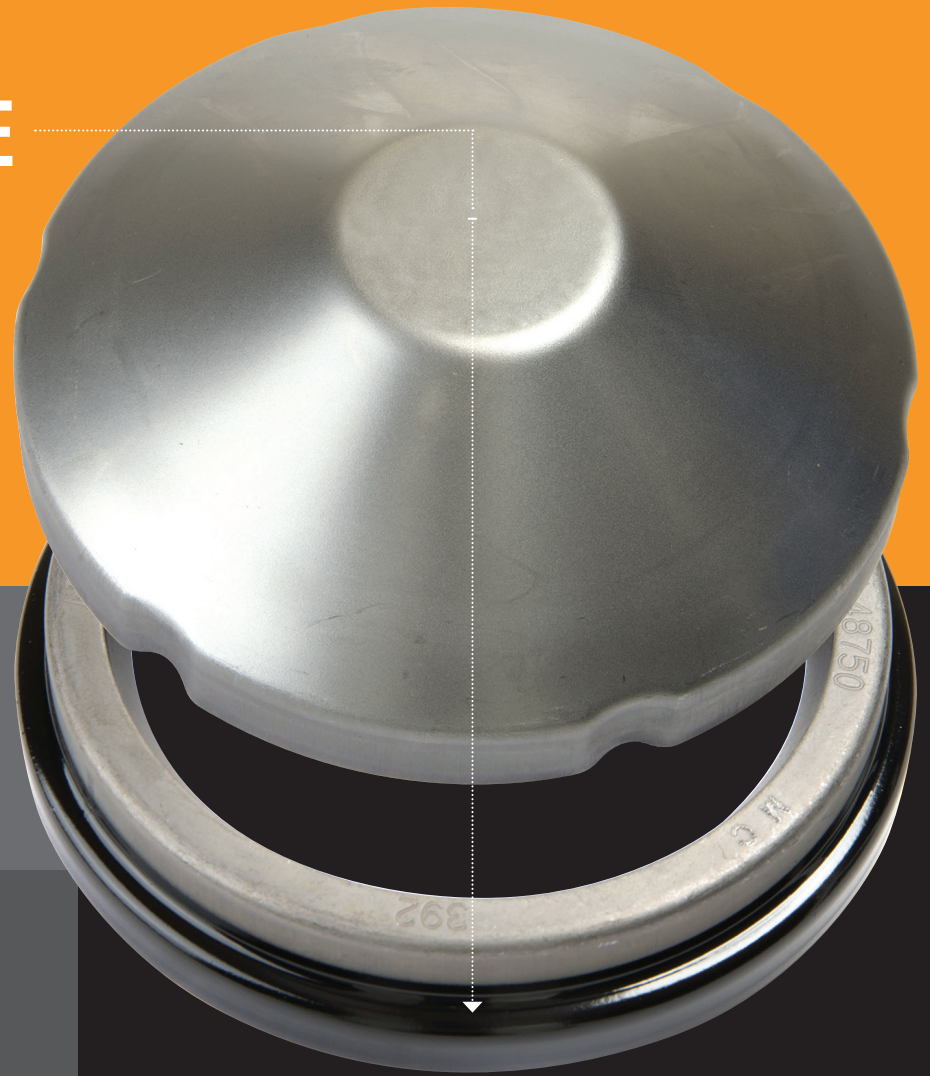
Designed for **easy and accurate seal installation**, the Timken® Insta-Tool® is a limited use<sup>1</sup> seal driver that is especially helpful when you need to make a quick fix or an emergency road call.

Helps eliminate premature seal failure due to improper installation<sup>2</sup>

An inexpensive yet effective alternative to professional grade installation tools

Use with Timken tool-installed seals on popular axle designs

Included with Timken seal part numbers ending in "T"; also sold separately



<sup>1</sup> Insta-Tool is capable of several installations, but is not meant to replace a commercial grade installation tool.

<sup>2</sup> Improper seal installation is one of the leading causes of premature seal failure.

# TIMKEN

## POPULAR INSTA-TOOL KITS WITH SEAL AND SPINDLE MANUFACTURER INTERCHANGE

Position	Spindle Type	Timken Seal Only	Insta-Tool Kit Shaft Size	Insta-Tool Only	Conmet	SKF CR		National		STEMCO				Bearing	Shaft OD
						Classic	Plus XL/ Scotseal	Red	Gold Series	Guardian	Grit Guard	Voyager	Discover		
FF	FF Steer (12000lb)	10S35000	10S35000T	DSD263	10045885	35066	35058	370001A	380001A	308-0836	382-8036	383-0136	383-0236	HM212049 and 3782	3.5"
	Steer	10S32500	10S32500T	DSD2		32470		370018A						JLM506849	3.25"
R	Drive (Eaton/Meritor)	11S47670	11S47670T	DSD056	10045887	47697	47692/47691	370003A	380003A	309-0973	392-9131	393-0173	393-0273	594 or 594A and 598 or 598A	4.767"
	Drive	11S34370	11S34370T	DSD2						309-0935				598	3.437"
F	Ford F650, Detroit Axle 515096 Front Hub	11S38750	11S38750T	DSD6		38750		370024A				393-0115	390-9099	598, 598A	3.875"
	DR 44K Mack	11S42500	11S42500T	DSD060		42672		370031A		309-0904				HM516449C	4.25"
TP	TP Trailer Spindle Trailer ProPar, Fruehauf, Eaton, Meritor	12S42500	12S42500T	DSD262	10045889	42623	42627	370065A	380065A	307-0723	372-7099	373-0123	373-0223	HM518445	4.25"
TN	TN Trailer Spindle	12S46250	12S46250T	DSD060	10045888	46305	46300	370025A	380025A	307-0743	372-7097	373-0143	373-0243	HM212248 Inboard	4.625"

# TIMKEN

The Timken team applies their know-how to improve the reliability and performance of machinery in diverse markets worldwide. The company designs, makes and markets bearings, gear drives, automated lubrication systems, belts, brakes, clutches, chain, couplings, linear motion products and related industrial motion rebuild and repair services.

[www.timken.com/aftermarket](http://www.timken.com/aftermarket)

**Stronger. By Design.**

1.5M 04-23 Order No. 11491 | Timken® is a registered trademark of The Timken Company. | © 2023 The Timken Company | Printed in U.S.A. All other trademarks are the property of their respective owners.