

Large Bore Industrial Seals

Enhanced with Gylon®

TIMKEN

Timken Seals with Gylon® Enhance Equipment and Bottom Line

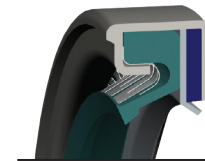
Bearings used in tough industrial applications need outstanding sealing support to keep your equipment and business running on time and on budget. With more than a century of technical leadership in bearing performance and friction management, Timken is uniquely positioned to offer the outstanding sealing solutions you need. Our complete line of industrial seals includes options to suit almost any industrial application, including Timken large bore industrial seals made with graphite-filled Gylon® material for extreme environments.

These enhanced oil seals provide:

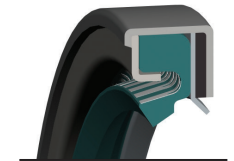
- Reliable performance under the toughest conditions.
- Resistance to aggressive chemicals and debris.
- High temperature capabilities, operating up to 400°F (205°C).
- Easy replacement – requires only an additional 1/8" (3.2 mm) width over standard Timken seal designs.

Specifications

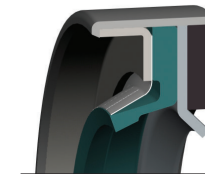
- Timken seal models 53, 59, 63 and 64 available with Gylon® material.
- Primary sealing lip available in Timken N Black, ES Blue and V Green.
- Shaft hardness recommended: minimum of Rockwell C 30-40.
- Shaft finish recommended: 10-20 micro inch Ra (0.25-0.50 micrometers) with no machine lead ($\pm 0.05^\circ$), scratches, dents, corrosion pits or any other surface defects.



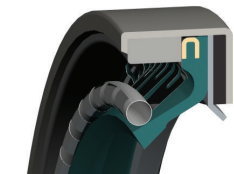
Model 53 G1



Model 59 G1

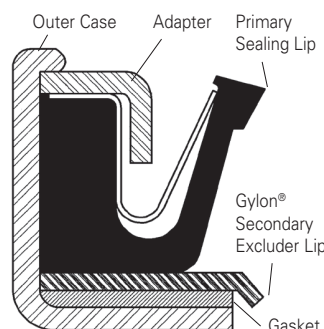


Model 63 G1



Model 64® G1

	Model 53G1	Model 63G1	Model 59G1	Model 64®G1
For shaft diameters	3" to 55" (76mm to 1397mm)	1/4" to 3" (6.4mm to 76mm)	6" to 55" (152mm to 1397mm)	8" to 55" (203mm to 1397mm)
Max. sealing surface speed	1,500 fpm (8 m/s)	1,500 fpm (8 m/s)	2,500 fpm (13 m/s)	3,500 fpm (18 m/s)
Total misalignment and runout	0.010" (0.25mm)	0.010" (0.25mm)	0.010" (0.25mm)	0.010" (0.25mm)
Max. temperature*	400°F (205°C)	400°F (205°C)	400°F (205°C)	400°F (205°C)
Max. pressure	7 psi (0.5 bar)	7 psi (0.5 bar)	7 psi (0.5 bar)	7 psi (0.5 bar)



Distributed by The Timken Company. Timken® Service Parts are carefully chosen from select manufacturers. Keep clean and dry.

The Timken team applies their know-how to improve the reliability and performance of machinery in diverse markets worldwide. The company designs, makes and markets high-performance mechanical components, including bearings, gears, belts, chain and related mechanical power transmission products and services.