

TIMKEN

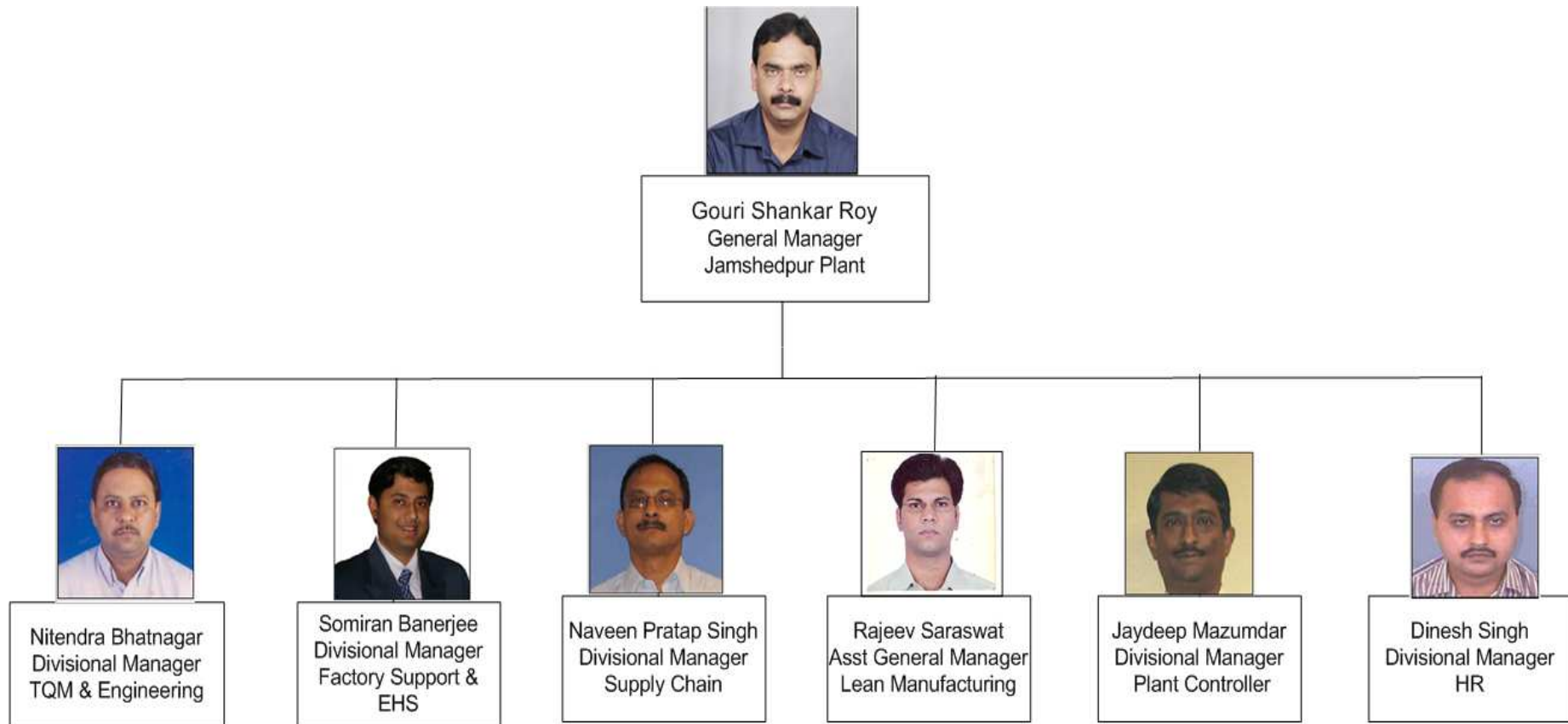
TIMKEN JAMSHEDPUR- OVERVIEW

Stronger.

Stronger. Commitment. Stronger. Value. Stronger. Worldwide. Stronger. Together. | Stronger. By Design.

Jamshedpur Leadership Team

TIMKEN



Stronger. **Commitment.** Stronger. **Value.** Stronger. **Worldwide.** Stronger. **Together.** | Stronger. **By Design.**

3



**It's not the
mountain we
conquer, but
ourselves.**

Sir Edmund Hillary

Vision 2016

- **Grow 2 fold in 3 years**
- **Transform into state-of-art facility**
- **Best Performing plant**
- **Talent Pool supporting Timken in Asia**
- **Green – Environment friendly**
- **Community inclusive**



PLANT MISSION



**“Exceed customers’
expectations**

**by timely delivery of
zero defect products**

at the World’s lowest cost”



**Globally
Competitive**

Product Range

Global:

**0-8” CC TS Bearings
Rail Cartridge Bearings
Double Extended Cones**

Regional:

CC Rollers

Local:

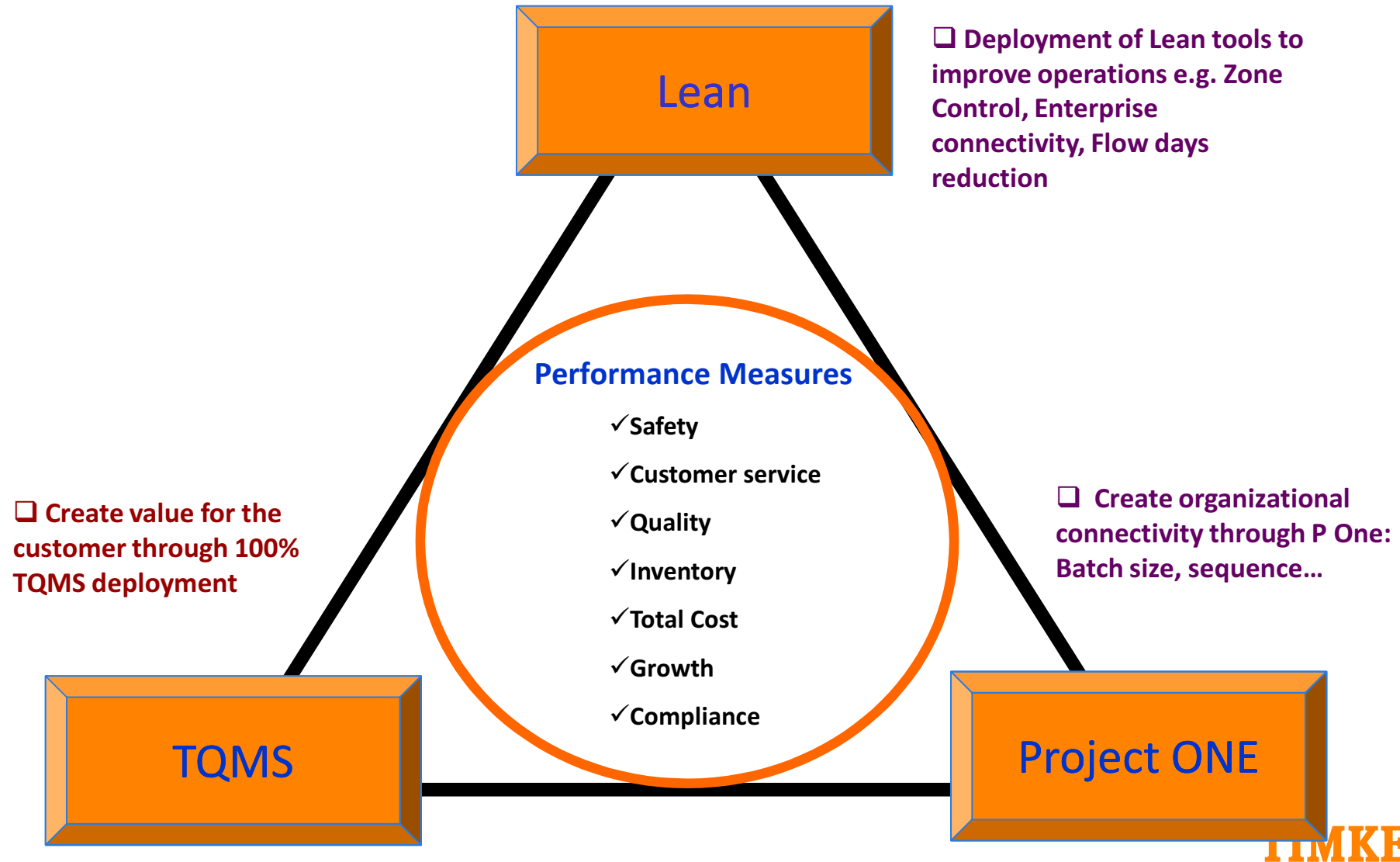
Differentiated Products

Operational Values

- **Safe Work Practices**
- **Care for Environment**
- **Customer Centricity**
- **First Time Right (RP, RQ, RT)**
- **Speed, ownership & pride**
- **Continuous Improvement**

TIMKEN

OPERATING FRAMEWORK



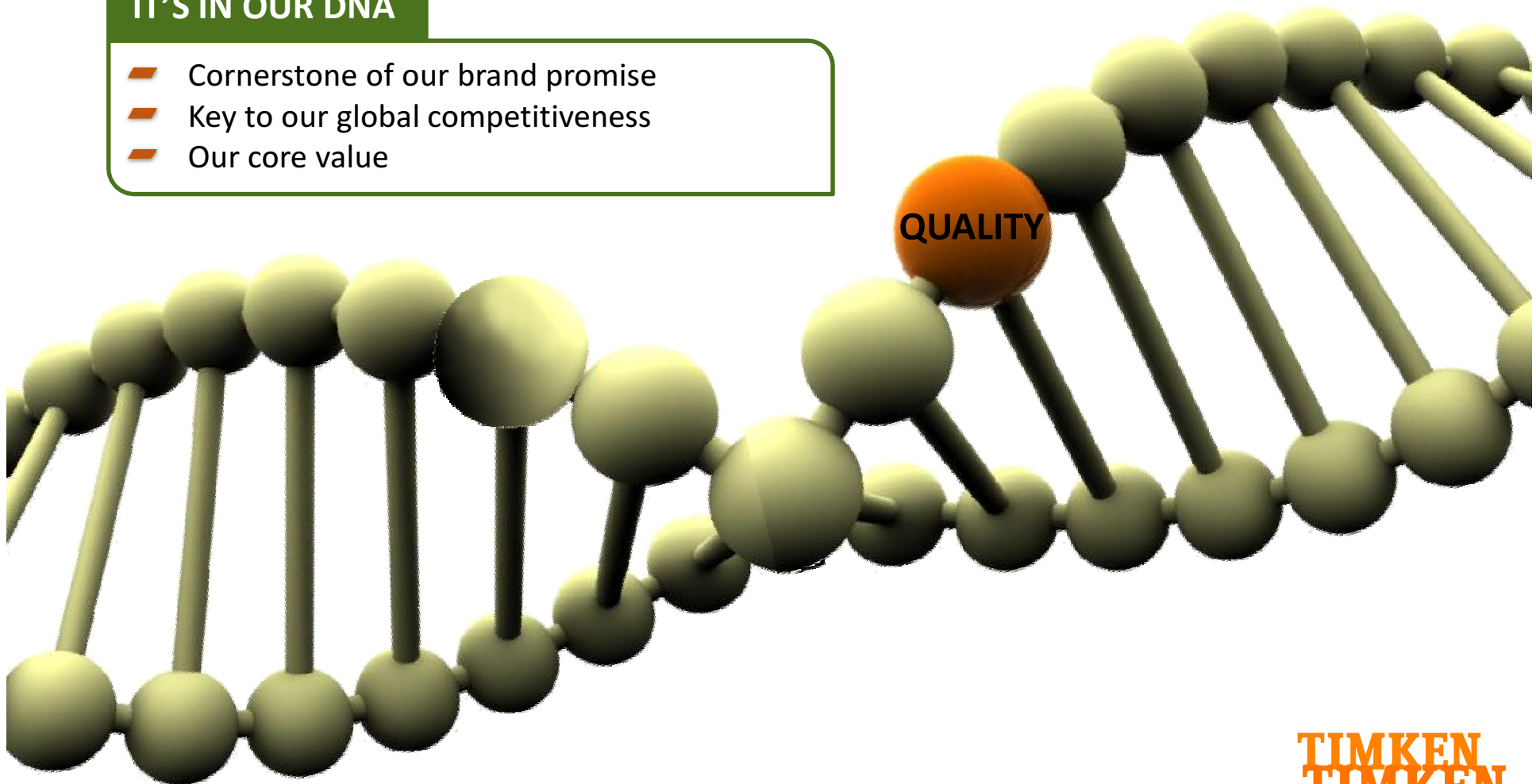
TIMKEN

QUALITY

Our quality standards are executed in every plant and process related to Timken products, regardless of manufacturing location.

IT'S IN OUR DNA

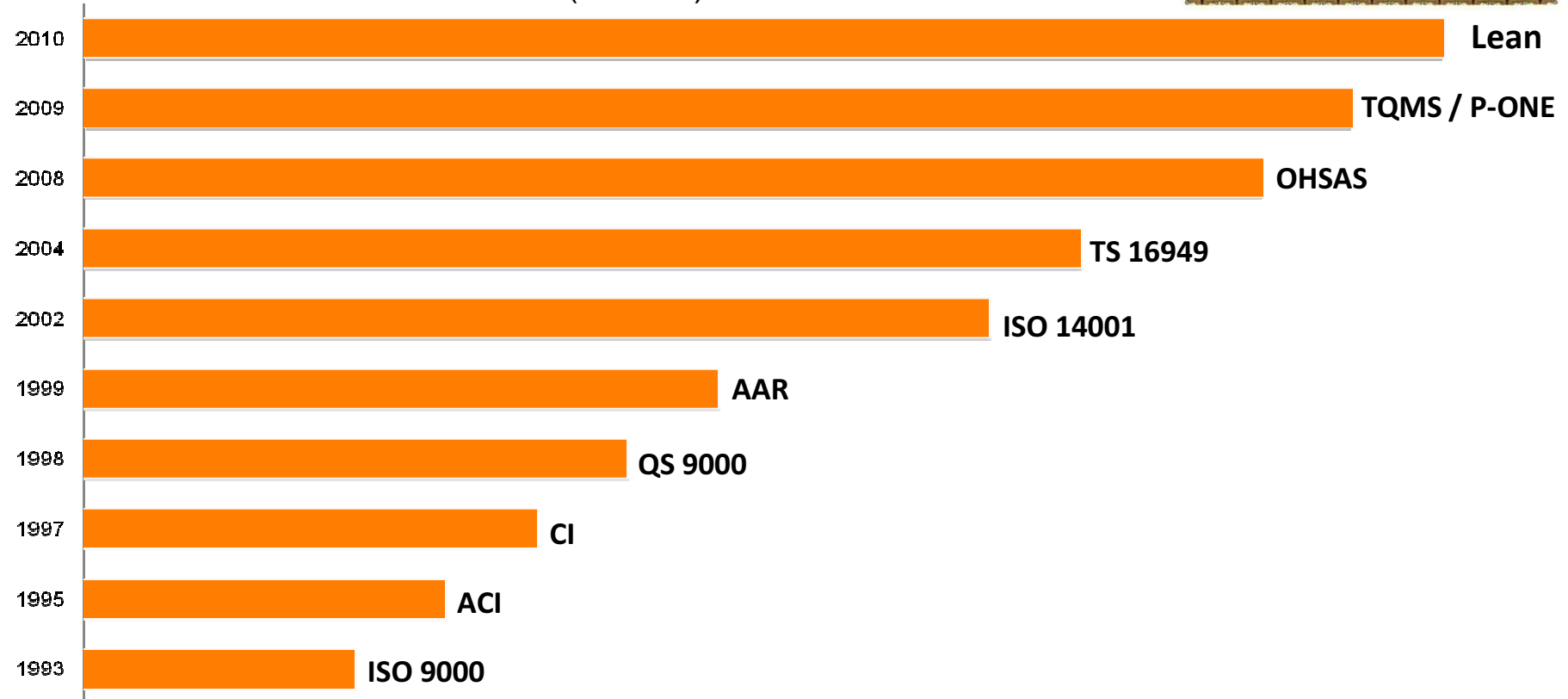
- Cornerstone of our brand promise
- Key to our global competitiveness
- Our core value



TIMKEN
TIMKEN

ADAPTING BEST PRACTICES

- 2011 - Bronze Medal – 1st Position – Most Improved Plant.
- 2012 – Bronze Medal – 3rd Position – Best Lean Tool Implementation.
- 2013 - 1st Runner up in most improved plant and best lean tool deployment
- 2014 - Lean Certification for Plant manager and Operations manager
- 2014 – Lean Assessment score 3.8 (Bronze).



TIMKEN

TIMKEN

Stronger. **Commitment.** Stronger. **Value.** Stronger. **Worldwide.** Stronger. **Together.** | Stronger. **By Design.**