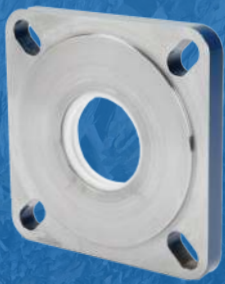


# SOLID STEEL BACKING PLATES



**STEEL BACKING PLATE**



**STEEL BACKING PLATE WITH FLANGE BLOCK**

## TARGET APPLICATIONS

Any flange block application requiring secondary sealing from the back side. Such as screw conveyors, coal feeders, mixer screws, and cooling tables.

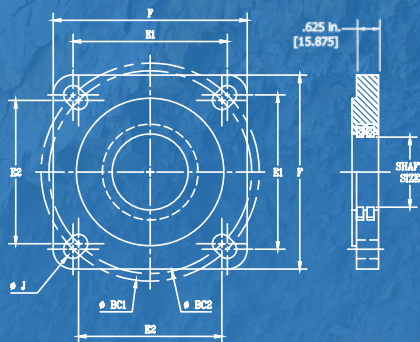
## TARGET MARKETS

Power Generation, Mining, Aggregate, Cement, Forest and Paper

## FEATURES AND BENEFITS

Designed to provide continuous seal against the rear of the squared flange housing for elimination of contamination ingress from all sides.

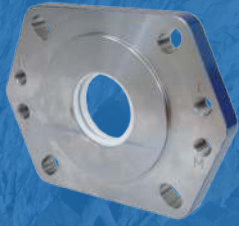
Dual Teflon® seals make 360° contact on shaft to help eliminate contamination into the rear of the housing through the shaft.



**STEEL BACKING PLATES AVAILABLE IN ECCENTRIC AND SET SCREW LOCKING HOUSING STYLES QMF/QAF AND QMFL/QAFL**

PART NUMBER	SHAFT SIZE	F	E1	E2	BC1	BC2	J	BOLT SIZE	WEIGHT
		mm	mm	mm	mm	mm	mm [+1.5/-0]	mm	kg
		in.	in.	in.	in.	in.	in. [+0.063/-0]	in.	lb
BP10T115S	1-15/16"								
BP10T200S	2"	139.7	111.1	103.3	157.1	146.1	13.5	12	2.0
BP10T050S	50mm	5.50	4.375	4.066	6.187	5.750	0.531	1/2	4.5
BP11T203S	2-3/16"								
BP11T204S	2-1/4"	157.2	123.8	114.5	175.1	161.9	16.7	16	2.8
BP11T055S	55mm	6.19	4.875	4.508	6.894	6.375	0.656	3/4	6.1
BP13T060S	60mm								
BP13T207S	2-7/16"	168.4	136.5	121.2	193.1	171.5	16.7	16	3.0
BP13T208S	2-1/2"	6.63	5.375	4.773	7.601	6.750	0.656	5/8	6.7
BP13T065S	65mm								
BP15T211S	2-11/16"								
BP15T212S	2-3/4"								
BP15T070S	70mm	189.0	152.4	141.4	215.5	200.0	21.0	20	3.9
BP15T215S	2-15/16"	7.44	6.000	5.568	8.485	7.875	0.827	3/4	8.6
BP15T300S	3"								
BP15T075S	75mm								
BP18T303S	3-3/16"								
BP18T304S	3-1/4"								
BP18T080S	80mm	219.2	178.0	170.6	251.7	241.3	21.0	20	5.4
BP18T085S	85mm	8.63	7.007	6.718	9.910	9.500	0.827	3/4	12.0
BP18T307S	3-7/16"								
BP18T308S	3-1/2"								
BP18T090S	90mm								
BP20T311S	3-11/16"								
BP20T312S	3-3/4"	253.2	196.9	193.1	278.4	273.1	25.0	24	7.1
BP20T315S	3-15/16"	9.97	7.750	7.601	10.960	10.750	0.984	1	15.6
BP20T400S	4"								
BP20T100S	100mm								
<b>BORE SIZE 110MM-115MM ONLY AVAILABLE IN QMF/QAF SERIES HOUSINGS</b>									
BP22T110S	110mm								
BP22T407S	4-7/16"	276.4	222.3	N/A	314.3	N/A	25.0	24	8.4
BP22T408S	4-1/2"	10.88	8.750		12.375		0.984	1	18.5
BP22T115S	115mm								

# SOLID STEEL BACKING PLATES WITH EXTRACTION HOLES



**STEEL BACKING PLATE**



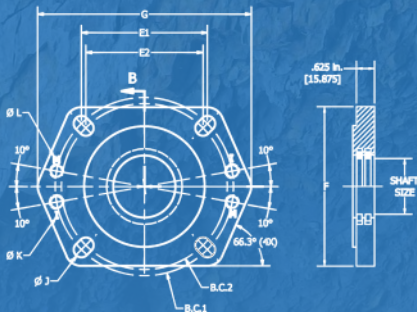
**STEEL BACKING PLATE WITH FLANGE BLOCK**

## EXTRACTION HOLES

The added extraction holes (with both imperial and metric threads) are designed for future maintenance convenience, to aid with bearings changes on units that over time have become difficult to remove from the shaft. The holes allow easier removal, mechanically separating the bearing from the plate, reducing the need to cut the bearing off, and potentially reducing the difficulty associated with bearing removal and replacement.

## FEATURES AND BENEFITS

- Solid steel backing plate with extraction holes for bearing removal
- Features both imperial and metric threads
- 1-15/16" – 4-1/2" (50mm-115mm)
- Fits QAF, QMF, QAF, and QMFL 4 bolt flange blocks
- Dual Teflon® seals make 360° contact to help eliminate ingress



### STEEL BACKING PLATES AVAILABLE IN ECCENTRIC AND SET SCREW LOCKING HOUSING STYLES QMF/QAF AND QMFL/QAFL

PART NUMBER	SHAFT SIZE	G	B	F	E1	E2	BC1	BC2	J	BOLT SIZE	WEIGHT
		mm in.	mm in.	mm in.	mm in.	mm in.	mm in.	mm in.	mm [+1.5/-0] in. [+0.063/-0]	mm in.	kg lbs.
BP10T115SW	1-15/16"										
BP10T200SW	2"	188.4 7.42	166.3 6.55	139.7 5.50	111.1 4.38	103.3 4.07	157.2 6.19	146.0 5.75	13.5 0.53	12 1/2	2.4 5.5
BP10T050SW	50 mm										
BP11T203SW	2-3/16"										
BP11T204SW	2-1/4"	215.1 8.47	189.7 7.47	157.2 6.19	123.8 4.88	114.5 4.51	175.1 6.89	161.9 6.38	16.7 0.66	16 5/8	3.1 6.9
BP11T055SW	55 mm										
BP13T060SW	60 mm										
BP13T207SW	2-7/16"	227.2 8.94	200.4 7.89	168.4 6.63	136.5 5.38	121.2 4.77	193.1 7.60	171.5 6.75	16.7 0.66	16 5/8	3.6 7.9
BP13T208SW	2-1/2"										
BP13T065SW	65 mm										
BP15T211SW	2-11/16"										
BP15T212SW	2-3/4"										
BP15T070SW	70 mm	255.9 10.07	225.7 8.89	189.0 7.44	152.4 6.00	141.4 5.57	215.5 8.49	200.0 7.88	21.0 0.83	20 3/4	4.4 9.7
BP15T215SW	2-15/16"										
BP15T300SW	3"										
BP15T075SW	75 mm										
BP18T303SW	3-3/16"										
BP18T304SW	3-1/4"										
BP18T080SW	80 mm										
BP18T085SW	85 mm	293.1 11.54	258.5 10.18	219.2 8.63	178.0 7.01	170.6 6.72	251.7 9.91	241.3 9.50	21.0 0.83	20 3/4	6.1 13.5
BP18T307SW	3-7/16"										
BP18T308SW	3-1/2"										
BP18T090SW	90 mm										
BP20T311SW	3-11/16"										
BP20T312SW	3-12/16"										
BP20T315SW	3-15/16"	342.1 13.47	301.8 11.88	253.2 9.97	196.8 7.75	193.0 7.60	278.4 10.96	273.0 10.75	27.0 1.06	24 1	8.5 18.9
BP20T400SW	4"										
BP20T100SW	100 mm										
BORE SIZE 110MM-115MM ONLY AVAILABLE IN QMF/QAF SERIES HOUSINGS											
BP22T110SW	110 mm										
BP22T407SW	4-7/16"	375.4 14.78	331.1 13.03	276.4 10.88	222.3 8.75	N/A	314.3 12.38	N/A	25.0 0.98	24 7/8	9.8 21.6
BP22T408SW	4-1/2"										
BP22T115SW	115 mm										

The Timken team applies their know-how to improve the reliability and performance of machinery in diverse markets worldwide. The company designs, makes and markets bearings, gear drives, automated lubrication systems, belts, brakes, clutches, chain, couplings, linear motion products and related power transmission rebuild and repair services.

**TIMKEN**

**Stronger. By Design.**

06-20 Order No. 10694 | Timken® is a registered trademark of The Timken Company. All other registered trademarks are the property of their respective owners. | © 2020 The Timken Company

[www.timken.com](http://www.timken.com)