

# TIMKEN



## INTRODUCING TECH SERIES PRO™ FREE ONLINE TRAINING

For Light and Commercial Vehicles. Minimize comebacks and inspire customer confidence with knowledge that helps you do the job right the first time.

[www.timken.com/techseriespro](http://www.timken.com/techseriespro)

[www.timken.com/techseriespro](http://www.timken.com/techseriespro)

Timken has updated and upgraded its popular free online Tech Series. The new program, Timken Tech Series Pro™ is now live.

What makes our free online series different is you will stand out as an expert – whether you work on a maintenance team, at the counter or in your own shop – by harnessing the critical skills necessary as a service technician or sales associate.

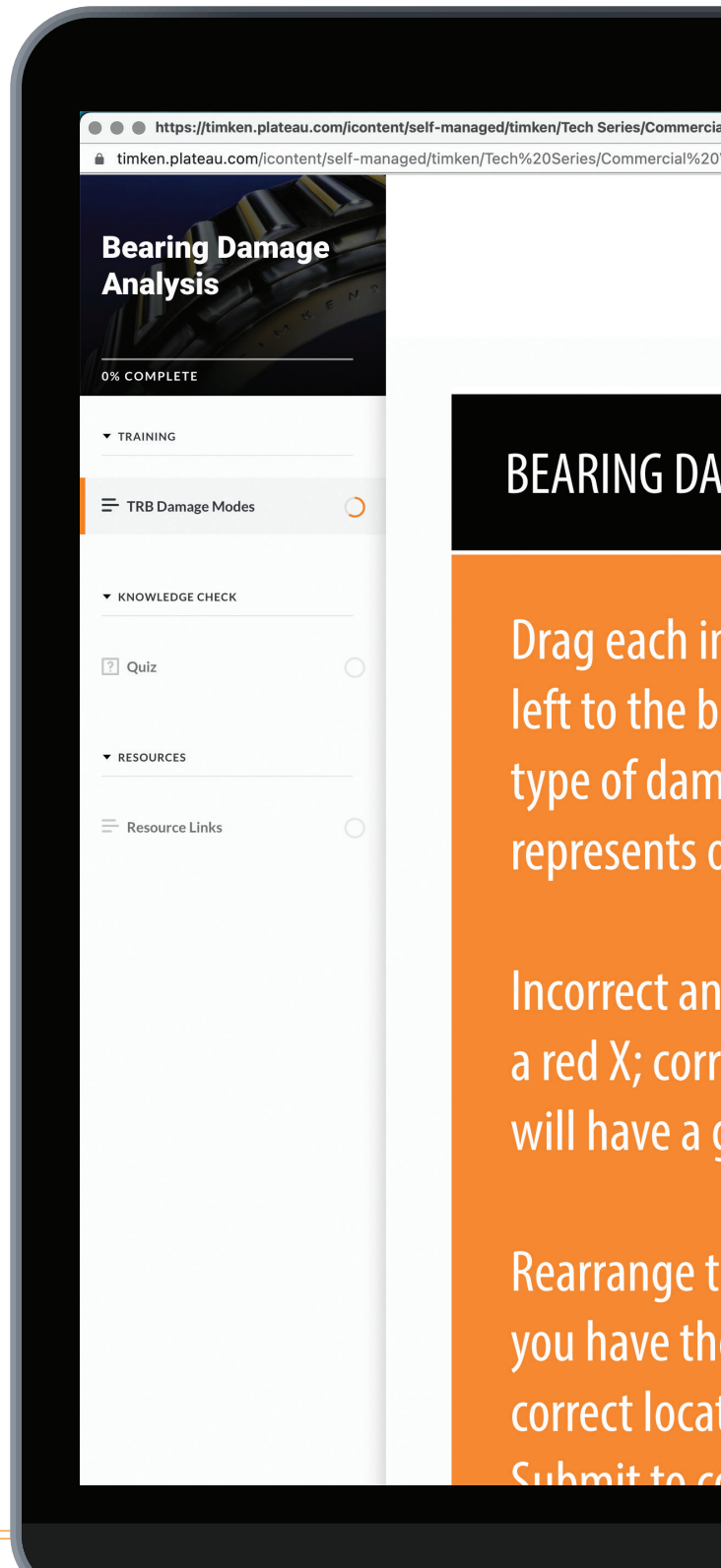


Timken Tech Series Pro provides you with technical and analytical skills to help you do the job right the first time. The new series is easier to navigate and can be completed at your own pace. **You will gain thorough knowledge of bearings, hubs, lubricants, and seals, plus so much more – whether you're involved with light or heavy-duty vehicles. Timken Tech Series Pro delivers practical, professional, and accurate knowledge to make your job easier.**



Created by certified technicians and Timken engineers, Tech Series Pro focuses on essential topics professional technicians use the most.

Earn recognition when you complete a section of light or commercial vehicle training and pass the test.



## Bearing Damage Analysis

Identify the type of damage mode that each

### DAMAGE ANALYSIS

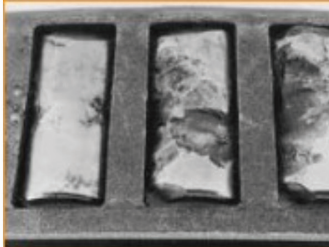
Damage on the  
box next to the  
damage mode it  
on the right.

Answers will have  
correct answers  
green check.

the images until  
them in the  
tion, then click  
continue

### DAMAGED TRBs

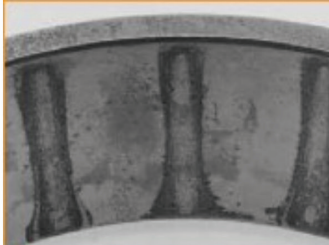
1



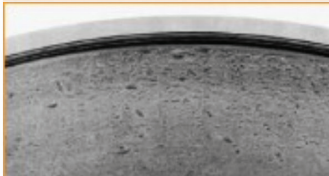
2



3



4



### COMMERCIAL VEHICLE PROGRAM

For users that manage and maintain heavy truck wheel ends. Users will gain valuable knowledge related to product, inspection, removal and installation of tapered roller bearings and seals used in commercial vehicle wheel ends.

- Tapered roller bearings\*
- Hubcap & seals
- Bearing damage analysis\*
- Bearing installation and adjustment
- Seal damage analysis\*

### LIGHT VEHICLE PROGRAM

For users that work on passenger cars and light duty trucks. Users will gain valuable knowledge related to product, inspection, removal and installation of wheel hubs, bearings and seals.

- Tapered roller bearings\*
- Wheel hub bearings
- Bearing damage analysis\*
- Light vehicle seals
- Seal damage analysis\*

*\*Common to both programs*

### Additional Free Training Resources:



Timken TechTips  
([timken.com/techtips](http://timken.com/techtips))



How-to videos  
([youtube.com/TheTimkenCompany](https://youtube.com/TheTimkenCompany))

## COURSE SUMMARIES

### TAPERED ROLLER BEARINGS

**PRODUCT OVERVIEW:** Timken engineered bearings feature precision tolerances, proprietary internal geometry and quality materials. Our tapered roller bearings deliver strong performance – consistently and reliably.

**INSTALLATION & ADJUSTMENT:** This course covers how to correctly install bearings in commercial vehicle wheel ends, and to adjust and verify bearing clearance.

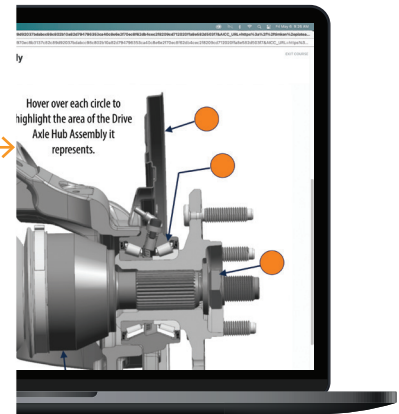
**DAMAGE MODES:** The most common damage modes (30 in total) are covered in this course. Knowing how to identify the types of damage can help you determine how to prevent them.



### HUB BEARINGS AND SEALS

**HUB BEARING OVERVIEW:** Course covers hub bearing assemblies used in passenger cars and light trucks. You will learn how to diagnose damaged hub bearings and proper techniques for removal and installation.

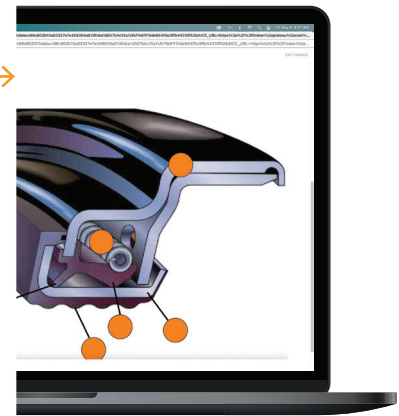
**SEAL AND HUBCAP OVERVIEW:** This course will show you how to correctly install seals and hubcaps. Also covered are the features of commercial vehicle wheel end seals and common materials.



### SEALS

**OVERVIEW:** This course covers seal components, design features, typical materials and complementary products, plus the proper installation techniques to help you on the job.

**DAMAGE ANALYSIS:** You will learn to identify common damage modes for seals and the possible causes.



# TIMKEN

The Timken team applies their know-how to improve the reliability and performance of machinery in diverse markets worldwide. The company designs, makes and markets bearings, gear drives, automated lubrication systems, belts, brakes, clutches, chain, couplings, linear motion products and related power transmission rebuild and repair services.

**Stronger. By Design.**

[www.timken.com/techseriespro](http://www.timken.com/techseriespro)