

# TIMKEN

## CHALLENGING CONDITIONS. RELIABLE PERFORMANCE.

### TIMKEN® SPLIT WATER-COOLED CONTINUOUS CASTER BEARINGS

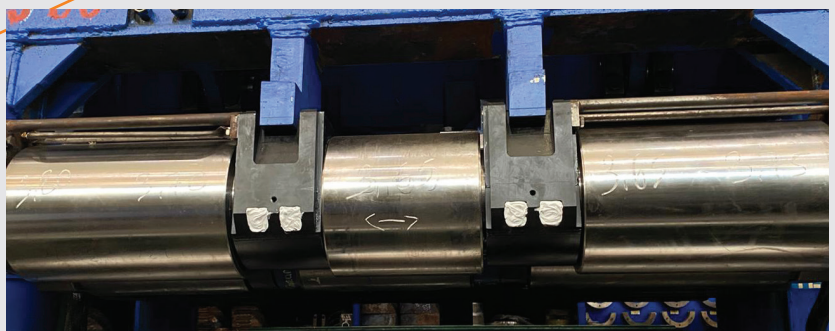
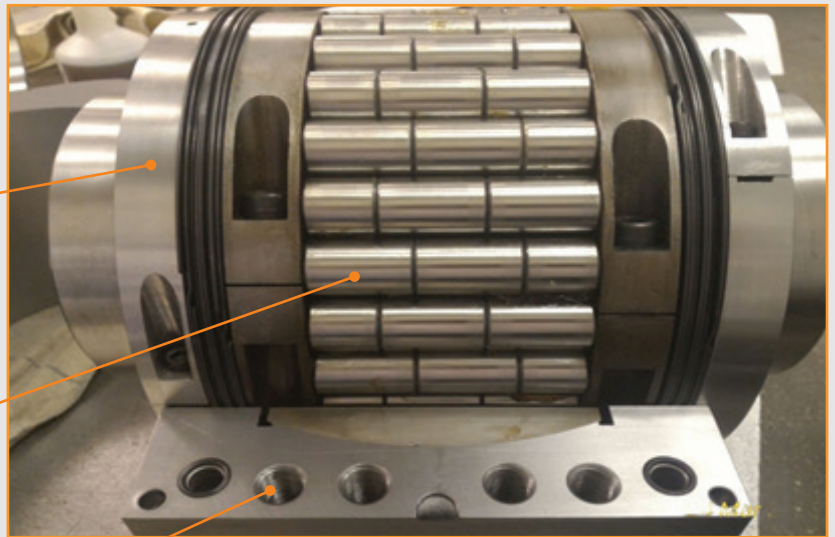
Continuous casters are one of the most arduous and challenging applications for split roller bearings. Timken split-to-the-shaft water-cooled housed units optimize the design to offer long term reliability and operational life. Special design features like full asymmetrically arranged rolling elements, low profile corrosion resistant housings and innovative sealing configurations maximize bearing life.

The use of multiple rollers rather than one long roller minimizes edge stresses and skewing, helping to reduce premature fatigue and failure.

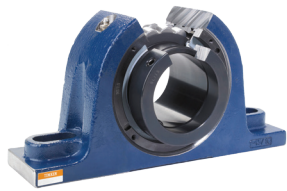
Shaft sizes typically in ranges from 90mm to 200mm.

#### FEATURES AND BENEFITS

- Water-cooled housing helps maintain reliable bearing operating temperature
  - 100% pressure testing on housings to ensure no leakage
  - Grease can be automatically fed through the outer race and directly in to the roller path
- 
- Water-cooled housings utilize Timken's cooling chamber design, which maximizes the cooling area without introducing dead zones and subsequent hot spots
  - Use of multiple rollers and outer rings with aligning features help minimize edge stresses and skewing (primary causes of premature fatigue failure)
  - Cross drilled holes in the housing allow water supplied under pressure to flow through the housing cap, maintaining the bearing temperature

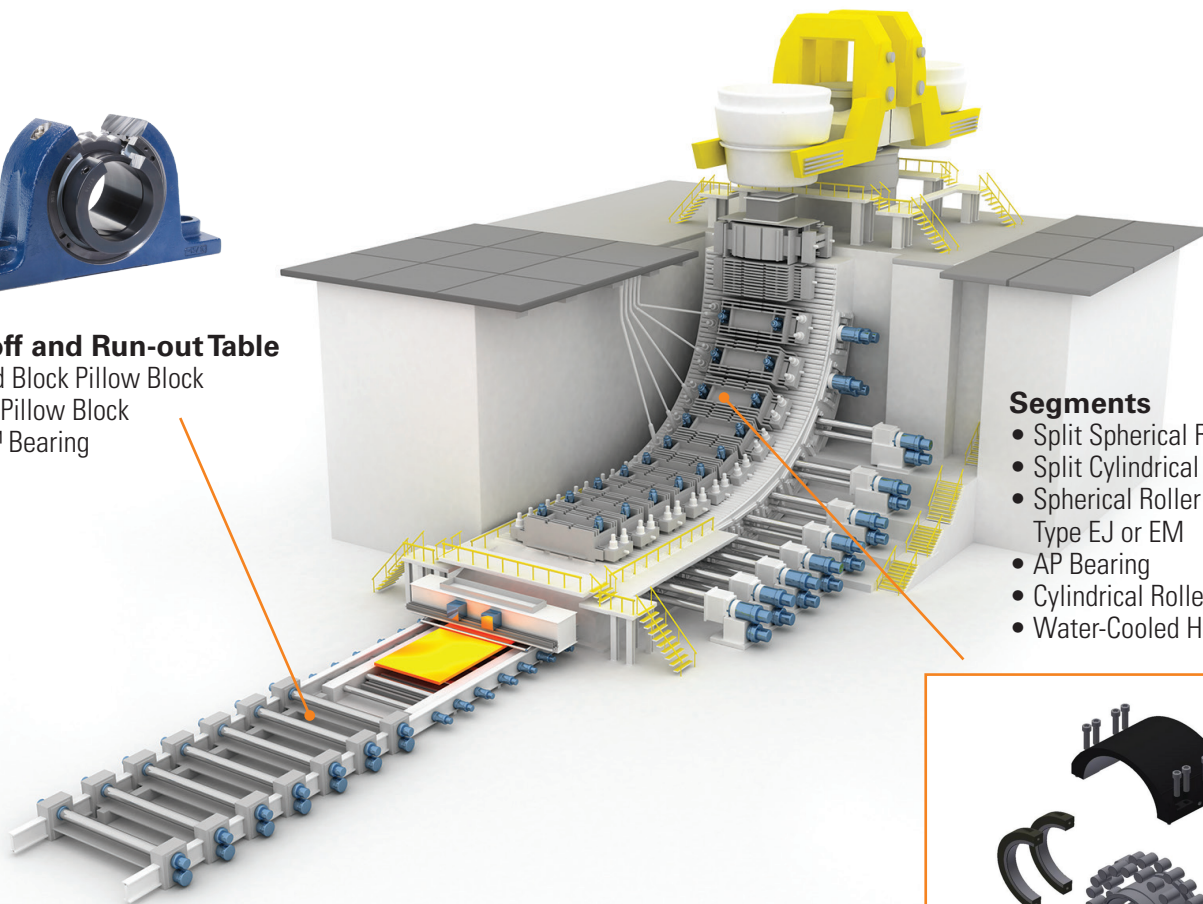


# Timken® Bearings for Continuous Casters



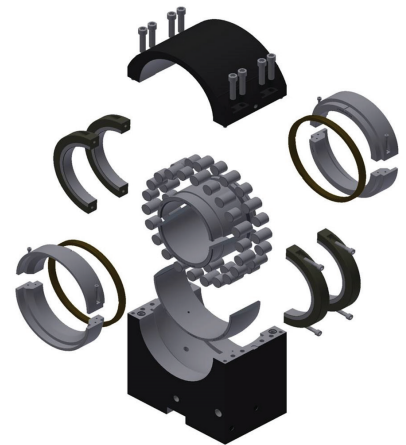
## Cut-off and Run-out Table

- Solid Block Pillow Block
- SAF Pillow Block
- AP™ Bearing



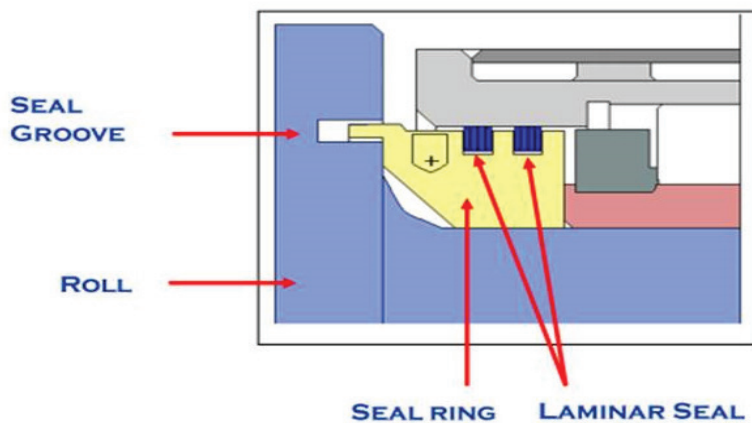
## Segments

- Split Spherical Roller Bearing
- Split Cylindrical Roller Bearing
- Spherical Roller Bearing – Type EJ or EM
- AP Bearing
- Cylindrical Roller Bearing
- Water-Cooled Housing



## SEAL ARRANGEMENT

Triple sealing elements protect the bearing from contamination while also allowing lubricant purging in centralized grease and air-oil type systems



# TIMKEN

The Timken team applies their know-how to improve the reliability and performance of machinery in diverse markets worldwide. The company designs, makes and markets bearings, gear drives, automated lubrication systems, belts, brakes, clutches, chain, couplings, linear motion products and related power transmission rebuild and repair services.

**Stronger. By Design.**

[www.timken.com](http://www.timken.com)