



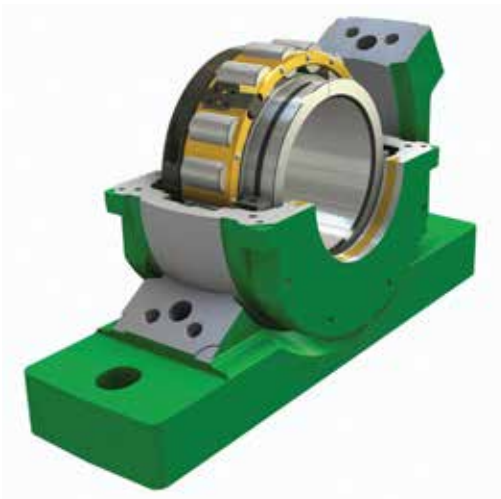
## TIMKEN® STEEL RISER PLATES

### AN EASIER, MAINTENANCE-FRIENDLY SOLUTION

When switching out a trapped bearing on a drive from a traditional mounted solid-block roller bearing (such as Type E or S2000) to a split unit mounted bearing, the shaft height on the new mounted split bearing is typically 0.250 in. to 0.500 in. greater than on the solid block unit. If changing the height of the drive isn't a problem, then the solution is a Timken® steel riser plate.

Our steel riser plates mount under mounted solid-block roller bearings to match the shaft height of mounted split bearings. Each riser plate is predrilled to match your specific bolt pattern, in two-bolt or four-bolt configurations.

Stocked for sizes from 2 7/16 in. to 4 15/16 in., every Timken steel riser plate is manufactured from A36 material with a tolerance of  $\pm 0.015$  in.



### FEATURES AND BENEFITS

- Designed for direct drop-in installation on Timken® mounted split-block bearings and SN blocks with no modifications.
- Predrilled and ready for installation.
- Available in thicknesses from 1/4 in. to 1/2 in.
- Sizes from 2 7/16 in. to 4 15/16 in.
- Two-bolt and four-bolt configurations.

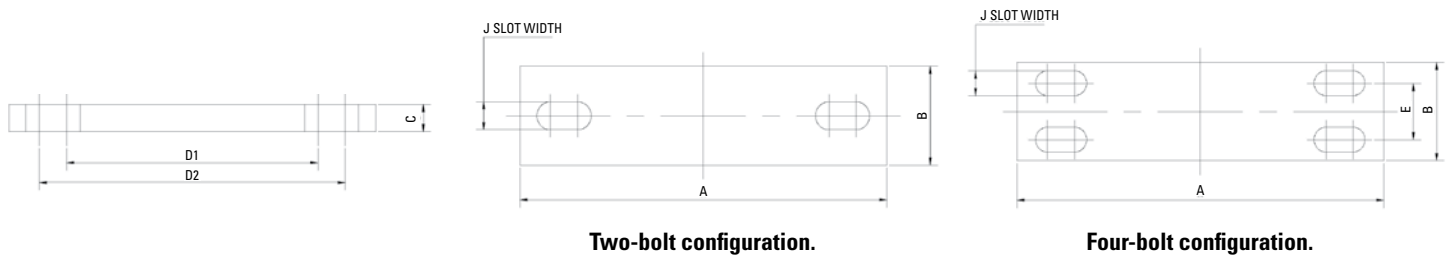


# STEEL RISER PLATES

Timken Split Part Number	Shaft Height		Size	Style	Shaft Height	Timken Equivalents <sup>(1)</sup>			Riser Plate	Plate Thickness
						S2000 Two Bolt	Type E			
	in.		in.		in.					in.
LSE207BRHSAFQAKPS	3.00	≈	Two Bolt 2 7/16	S2000 or Type E	2.75	QAPL13A207SM	QAP13A207SM	Plus	THU21083	0.250
LSE207BRHSAFQA4BKPS	3.25	≈	Four Bolt 2 7/16	S2000	2.75	QAPF13A207SM	–	Plus	THU20189	0.500
LSE207BRHSAFQA4BKPS	3.25	≈	Four Bolt 2 7/16	Type E	2.75	–	QAPR13A207SM	Plus	THU20189	0.500
LSE215BRHSAFQAKPS	3.50	≈	Two Bolt 2 15/16	Type E	3.13	–	QAP15A215SM	Plus	THU20184	0.375
LSE215BRHSAFQAKPS	3.50	≈	Two Bolt 2 15/16	S2000	3.25	QAPL15A215SM	–	Plus	THU20185	0.250
LSE215BRHSAFQA4BKPS	3.50	≈	Four Bolt 2 15/16	Type E	3.13	–	QAPR15A215SM	Plus	THU20190	0.375
LSE215BRHSAFQA4BKPS	3.50	≈	Four Bolt 2 15/16	S2000	3.25	QAPF15A215SM	–	Plus	THU20191	0.250
LSE307BRHSAFQBKPS	4.00	≈	Two Bolt 3 7/16	S2000 or Type E	3.75	QAPL18A307SM	QAP18A307SM	Plus	THU20186	0.250
LSE307BRHSAFQA4BKPS	3.75	≈	Four Bolt 3 7/16	S2000 or Type E	3.75	QAPF18A307SM	QAPR18A307SM	Plus	(2)	–
LSE315BRHSAFQAKPS	4.25	≈	Two Bolt 3 15/16	S2000	4.25	QAPL20A315SM	–	Plus	(2)	–
LSE315BRHSAFQAKPS	4.50	≈	Four Bolt 3 15/16	S2000 or Type E	4.25	–	QAP20A315SM	Plus	THU20193	0.250
LSE407BRHSAFQBKPS	5.25	≈	Four Bolt 4 7/16	S2000 or Type E	4.75	QAPF22A407SM	QAPF22A407SM	Plus	THU20195	0.500
LSE415BRHSAFQAKPS	6.00	≈	Four Bolt 4 15/16	S2000 or Type E	5.50	QAPF26A415SM	QAPF26A415SM	Plus	THU20196	0.500

<sup>(1)</sup>Available in multiple seal offerings.

<sup>(2)</sup>No plate required.



# TIMKEN

The Timken team applies their know-how to improve the reliability and performance of machinery in diverse markets worldwide. The company designs, makes and markets bearings, gear drives, automated lubrication systems, belts, brakes, clutches, chain, couplings, linear motion products and related industrial motion rebuild and repair services.

**Stronger. By Design.**

[www.timken.com](http://www.timken.com)