

Non-Metallic Bearing Isolators

for Electric Motors

TIMKEN

Offering the Latest in Sealing Technology

As a global provider of friction management solutions, we supply a variety of industries with the latest in high-performance sealing technology. Not only do we offer a full line of Timken industrial seals for both small and large bore applications, but we've also added Timken bearing isolators for electric motors to our already extensive product offering.

Our non-metallic bearing isolators:

- Provide bearings with an extra layer of protection from contaminants.
- Are easy to install, in the repair shop or in the field.
- Do not require lubrication during operation.
- Do not require installation tools.
- Meets IEEE 841-2001 test standards.



Isolate Your Bearings from Harmful Contamination

Timken non-metallic bearing isolators feature a durable two-piece unitized construction that will not come apart during installation or operation. Made from PolyTetraFluoroEthylene (PTFE) material, these isolators have a wide temperature capability and provide outstanding chemical resistance.

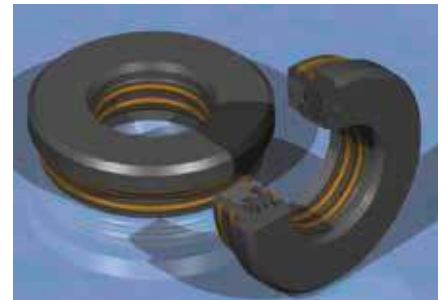
The non-contact design eliminates shaft scoring, drag and heat caused by friction, so there's no need to use lubrication.

Choose between our standard flangeless and step-shaft designs *[as shown at the right]* to suit your application and operating environment.

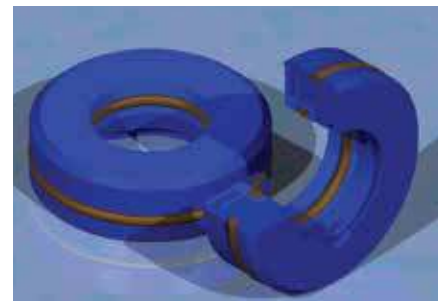
Design Parameters

- Operating temperature: -40°F (-40°C) to 400°F (204°C)
- Material: glass-filled PTFE for Iso-Gards and graphite-filled PTFE for Equalizers
- Surface speed: up to 4,500 FPM (22.9 m/s)
- Axial motion: +/-0.015" (0.38 mm)
- Shaft to Bore Misalignment: +/-0.020" (0.5 mm)
- Pressure: Ambient (5 psi for grease-purgeable design)

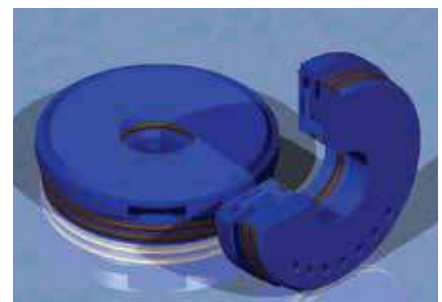
Electric motor with a Timken non-metallic bearing isolator installed.



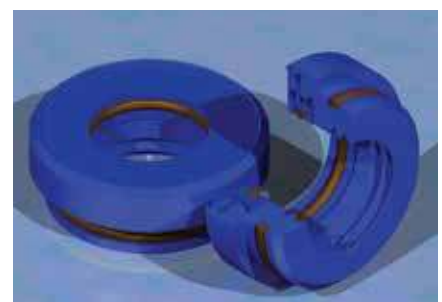
Standard Graphite-Filled PTFE



Flangeless Glass-Filled PTFE



Grease Purge Glass-Filled PTFE



Standard Glass-Filled PTFE

Ordering Information: Electric Motor Frames Sizes

Frame Size	Seal Size (inches)	Isolator Part No.	Frame Size	Seal Size (inches)	Isolator Part No.	Frame Size	Seal Size (inches)	Isolator Part No.
130	1.312 x 2.000 x 0.625	29507-1146	326U	1.875 x 2.875 x 0.750	29502-3585	326U	1.875 x 2.875 x 0.750	29502-3585
182	0.875 x 1.875 x 0.750	29502-4267	326S	1.625 x 2.625 x 0.750	29502-4144	326S	1.625 x 2.625 x 0.750	29502-4144
182T	1.125 x 2.125 x 0.750	29502-4139	326T	2.125 x 3.125 x 0.750	29502-4146	326T	2.125 x 3.125 x 0.750	29502-4146
184	0.875 x 1.875 x 0.750	29502-4267	326TS	1.875 x 2.875 x 0.750	29502-3585	326TS	1.875 x 2.875 x 0.750	29502-3585
184T	1.125 x 2.125 x 0.750	29502-4139	360	2.500 x 4.375 x 0.750	29502-4353	360	2.500 x 4.375 x 0.750	29502-4353
210	1.375 x 2.375 x 0.750	29502-4141	364S	1.625 x 2.625 x 0.750	29502-4144	364S	1.625 x 2.625 x 0.750	29502-4144
213	1.125 x 2.125 x 0.750	29502-4139	364U	2.125 x 3.125 x 0.750	29502-4146	364U	2.125 x 3.125 x 0.750	29502-4146
213T	1.375 x 2.375 x 0.750	29502-4141	364US	1.875 x 2.875 x 0.750	29502-3585	364US	1.875 x 2.875 x 0.750	29502-3585
215	1.125 x 2.125 x 0.750	29502-4139	364T	2.375 x 3.375 x 0.750	29502-4149	364T	2.375 x 3.375 x 0.750	29502-4149
215T	1.375 x 2.375 x 0.750	29502-4141	364TS	1.875 x 2.875 x 0.750	29502-3585	364TS	1.875 x 2.875 x 0.750	29502-3585
250	1.766 x 2.750 x 0.750	29502-4350	365S	1.625 x 2.625 x 0.750	29502-4144	365S	1.625 x 2.625 x 0.750	29502-4144
254U	1.375 x 2.375 x 0.750	29502-4141	365U	2.125 x 3.125 x 0.750	29502-4146	365U	2.125 x 3.125 x 0.750	29502-4146
254T	1.625 x 2.625 x 0.750	29502-4144	365US	1.875 x 2.875 x 0.750	29502-3585	365US	1.875 x 2.875 x 0.750	29502-3585
256U	1.375 x 2.375 x 0.750	29502-4141	365T	2.375 x 3.375 x 0.750	29502-4149	365T	2.375 x 3.375 x 0.750	29502-4149
256T	1.625 x 2.625 x 0.750	29502-4144	365TS	1.875 x 2.875 x 0.750	29502-3585	365TS	1.875 x 2.875 x 0.750	29502-3585
280	1.900 x 3.500 x 0.750	29502-4356	404S	1.875 x 2.875 x 0.750	29502-3585	404S	1.875 x 2.875 x 0.750	29502-3585
284U	1.625 x 2.625 x 0.750	29502-4144	404U	2.375 x 3.375 x 0.750	29502-4149	404U	2.375 x 3.375 x 0.750	29502-4149
284T	1.875 x 2.875 x 0.750	29502-3585	404US	2.125 x 3.125 x 0.750	29502-4146	404US	2.125 x 3.125 x 0.750	29502-4146
284TS	1.625 x 2.625 x 0.750	29502-4144	404T	2.875 x 3.875 x 0.750	29502-4153	404T	2.875 x 3.875 x 0.750	29502-4153
286U	1.625 x 2.625 x 0.750	29502-4144	404TS	2.125 x 3.125 x 0.750	29502-4146	404TS	2.125 x 3.125 x 0.750	29502-4146
286T	1.875 x 2.875 x 0.750	29502-3585	405S	1.875 x 2.875 x 0.750	29502-3585	405S	1.875 x 2.875 x 0.750	29502-3585
286TS	1.625 x 2.625 x 0.750	29502-4144	405U	2.375 x 3.375 x 0.750	29502-4149	405U	2.375 x 3.375 x 0.750	29502-4149
320	2.355 x 3.870 x 0.750	29502-4351	405US	2.125 x 3.125 x 0.750	29502-4146	405US	2.125 x 3.125 x 0.750	29502-4146
324U	1.875 x 2.875 x 0.750	29502-3585	405T	2.875 x 3.875 x 0.750	29502-4153	405T	2.875 x 3.875 x 0.750	29502-4153
324S	1.625 x 2.625 x 0.750	29502-4144	405TS	2.125 x 3.125 x 0.750	29502-4146	405TS	2.125 x 3.125 x 0.750	29502-4146
324T	2.125 x 3.125 x 0.750	29502-4146	324T	2.125 x 3.125 x 0.750	29502-4146			
324TS	1.875 x 2.875 x 0.750	29502-3585	324TS	1.875 x 2.875 x 0.750	29502-3585			

Frame size dimensions are for reference only. Please consult motor manufacturer for the most current dimensions.

Distributed by The Timken Company. Timken® Service Parts are carefully chosen from select manufacturers. Keep clean and dry.

TIMKEN

The Timken team applies their know-how to improve the reliability and performance of machinery in diverse markets worldwide. The company designs, makes and markets high-performance mechanical components, including bearings, gears, belts, chain and related mechanical power transmission products and services.

Stronger. Commitment. Stronger. Value. Stronger. Worldwide. Stronger. Together. | Stronger. By Design.

www.timken.com