

## Wheel Hub Damage Analysis Guide

To diagnose the cause of bearing damage, look closely at damaged hubs and compare customers' hubs with the photos below.

### Loss of Bearing Retention

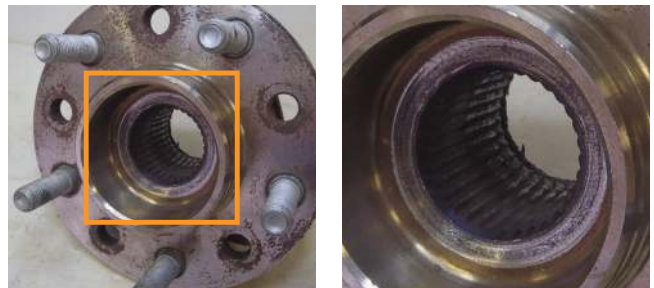
**Symptoms:** Wheel vibration and/or excessive noise.

**Diagnosis:** Rough or worn axle retaining nuts indicate movement due to loss of bearing retention. Refer to the original equipment manufacturer's instructions or visit [timkeninfo.com](http://timkeninfo.com) to identify the proper torque for the axle retaining nut.

**Cause:** Loss of bearing retention is the leading cause of hub bearing damage, resulting in wheel vibration and/or noise.

The axle-retaining nut backs off when bearings demonstrate improper torque or have lost their self-retention features. This changes the setting of the bearings inside the hub, causing misalignment and accelerating wear.

**Solution:** Always use a new axle retaining nut and tighten it to the proper torque to avoid a rough and worn surface under the nut.



Tighten axle lock nut to proper torque to help avoid rough and worn surface under the nut.

### Excessive Wear on Cone Bore

**Symptoms:** Accelerated bearing wear or multiple returns for the same wheel-end application.

**Diagnosis:** Inspect the hub barrel when replacing a wheel bearing with a separate hub. Check the hub barrel outer diameter (OD) for signs of damage. Look for ridges or discoloration on the barrel surface due to heat damage from cone turning. Replace the hub if you find any signs of damage.

**Cause:** Loss of axle retention or reinstalling a worn hub can allow the cone or inner race to spin on the hub, accelerating wear on the cone bore and hub barrel. This cone turning can indicate loss of bearing retention or improper fit between the cone bore and hub barrel diameter.

**Solution:** If you see damage to the hub barrel, replace it.



Reduce excessive wear by using hubs in good condition.



Visit [timken.com/techseries](http://timken.com/techseries) to enroll in free technical training.

Get more TechTips online at [www.timken.com/techtips](http://www.timken.com/techtips)

## ABS Malfunction

**Symptoms:** A damaged sensor cable or a broken wheel speed sensor turned the anti-lock braking system (ABS) light on.

**Diagnosis:** Look for damage from sharp objects or evidence that the cable was caught in a pinch point. Ensure the cable is routed through the entire sensor cable retaining clip. If the sensor cable is not damaged, examine the external sensor for cracks in the sensor body or a loose cable in the sensor head.



Avoid pinched cable by using retainer clips.

**Cause:** Sharp objects may have damaged, pinched or bent the sensor cable. Sensor cable damage is a common cause of ABS malfunctions. Installation may have damaged the wheel speed sensor.

**Solution:** Route sensor cable through all retaining clips. Use hubs in good condition to reduce wear. Avoid pinched cable by using retainer clips.

### WARNING

**Failure to observe the following warnings could create a risk of death or serious injury.**

Do not attempt to disassemble and reassemble unitized wheel end hubs and bearing assemblies. Improper reassembly could lead to failure.

Proper maintenance and handling practices are critical. Always follow installation instructions and maintain proper lubrication.

Tensile stresses can be very high in tightly fitted bearing components. Attempting to remove such components by cutting the cone (inner race) may result in a sudden shattering of the component causing fragments of metal to be forcefully expelled. Always use properly guarded presses or bearing pullers to remove bearings from shafts, and always use suitable personal protective equipment, including safety glasses.

### CAUTION

**Failure to follow these cautions may result in property damage.**

The products cataloged are application specific. Any use in applications other than those intended could lead to equipment failure or to reduced equipment life.

Use of improper bearing fits may cause damage to equipment.

Do not use damaged bearings. The use of a damaged bearing can result in equipment damage.

*TechTips is not intended to substitute for the specific recommendations of your equipment suppliers.*

*Every reasonable effort has been made to ensure the accuracy of the information contained in this writing, but no liability is accepted for errors, omissions or for any other reason.*

# TIMKEN

The Timken team applies their know-how to improve the reliability and performance of machinery in diverse markets worldwide. The company designs, makes and markets high-performance mechanical components, including bearings, gears, belts, chain and related mechanical power transmission products and services.

[www.timken.com/aftermarket](http://www.timken.com/aftermarket)

Stronger. **Commitment.** Stronger. **Value.** Stronger. **Worldwide.** Stronger. **Together.** | Stronger. **By Design.**