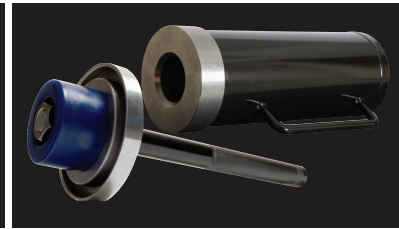
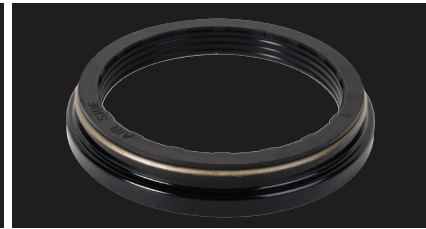
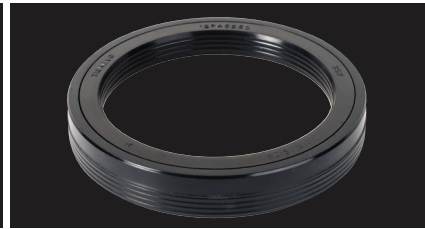


installation tools for leather seals



TIMKEN KIT NUMBER	TIMKEN SEAL NUMBER	TIMKEN TOOL KIT NUMBER	TYPE	TOOL COMPONENTS	SLEEVE TOOL	BEARING NUMBER	BEARING I.D.
11Y47672	11L48750	T11L48750	Leather Series	H SD45 BG348	AD DP348	594, 594A	3.750
11Y47671	11L48751	T11L48751	Leather Series	H SD40 BG348	AD DP348	594, 594A	3.750
11Y45001	11L46370	T11L46370	Leather Series	H SD39 BG316	AD DP316	580, 582	3.250
11Y45000	11L46250	T11L46250	Leather Series	H SD39 BG348	AD DP348	594, 594A	3.750
11Y47670	11L47670	T11L47670	Leather Series	H SD46 BG348	AD DP348	683	3.750
11Y42500	11L43751	T11L43751	Leather Series	H SD37 BG316	AD DP316	663, HM516449	3.250
N/A	12L45000	T12L45000	Leather Series	H SD38 BG324	AD DP324	665A	3.375
12Y46250	12L47340	T12L47340	Leather Series	H SD19 BG335A	AD DP335A	HM218248	3.542
12Y42501	12L43750	T12L43750	Leather Series	H SD49 BG332	AD DP332	593, HM518445	3.500
12Y40000	12L41250	T12Y40000	Leather Series	H SD48 BG316	AD DP316	663	3.250
11Y40000	11L41250	T11L41250	Leather Series	H SD48 BG316	AD DP316	663	3.250
11X47676	11L48750	T11L48750	Leather Series	H SD45 BG348	AD DP348	594, 594A	3.750
11X47675	11L48751	T11L48751	Leather Series	H SD40 BG348	AD DP348	594, 594A	3.750
11X43750	11L45000	T11L45000	Leather Series	H SD38 BG316	AD DP316	595	3.250
11X45002	11L46370	T11L46370	Leather Series	H SD39 BG316	AD DP316	580, 582	3.250
11X42620	11L43650	T11L43650	Leather Series	H SD37 BG316	AD DP316	582, 663A	3.250
11X38752	11L39840	T11L39840	Leather Series	H SD34 BG316	AD DP316	47685 / 47686	3.250
12X43751	11L45001	T11L45001	Leather Series	H SD38 BG340	AD DP340	598	3.625
11X45001	11L46250	T11L46250	Leather Series	H SD39 BG348	AD DP348	594, 594A	3.750
11X47674	11L47670	T11L47670	Leather Series	H SD46 BG348	AD DP348	683	3.750
11X42500	11L43751	T11L43751	Leather Series	H SD37 BG316	AD DP316	663, HM516449	3.250
11X39370	11L40460	T11L40460	Leather Series	H SD44 BG300	AD DP300	495AX	3.000
11X35000	11L36250	T11L36250	Leather Series	H SD32 BG252	AD DP252	33281	2.812
11X34370	11L36250	T11L36250	Leather Series	H SD32 BG252	AD DP252	33281	2.812
11X45620	12L49370	T12L49370	Leather Series	H SD41 BG324	AD DP324	758	3.375
11X52500	11L53750	T11L53750	Leather Series	H SD42 BG400	AD DP400	687, 780	4.000
11X48750	11L49930	T11L49930	Leather Series	H SD41 BG340	AD DP340	598, 598A	3.625
11X47673	11L49930	T11L49930	Leather Series	H SD41 BG340	AD DP340	598, 598A	3.625
11X47672	11L48751	T11L48751	Leather Series	H SD40 BG348	AD DP348	594, 594A	3.750
11X47671	11L48750	T11L48750	Leather Series	H SD45 BG348	AD DP348	594, 594A	3.750
11X47670	11L49530	T11L49530	Leather Series	H SD43 BG316	AD DP316	581	3.250
11X50000	11L51250	T11L51250	Leather Series	H SD43 BG316	AD DP316	663, HM516449	3.250
11X41560	11L41560	T11L41560	Leather Series	H SD36 BG316	NOT REQUIRED	47686	3.250
11X33120	11L34060	T11L34060	Leather Series	H SD30 BG240	NOT REQUIRED	3984	2.625

TIMKEN KIT NUMBER	TIMKEN SEAL NUMBER	TIMKEN TOOL KIT NUMBER	TYPE	TOOL COMPONENTS			SLEEVE TOOL		BEARING NUMBER	BEARING I.D.
12X31251	12L32500	T12L32500	Leather Series	H	SD28	BG240	AD	DP240	3984	2.625
12X39370	12X39370	T12X39370	Leather Series	H	SD44	BG300	AD	BG300	495AX	3.000
11X38751	11L40471	T11L40471	Leather Series	H	SD35	BG300	AD	DP300	5760, 47687	3.000
11X38750	11L40470	T11L40470	Leather Series	H	SD35	BG300	AD	DP300	42688	3.000
11X45000	11L46370	T11L46370	Leather Series	H	SD39	BG316	AD	DP316	580, 582	3.250
10X35003	10L36253	T10L36253	Leather Series	H	SD31	BG240	AD	DP240	HM212049	2.625
10X43750	10L45000	T10L45000	Leather Series	H	SD47	BG300	AD	DP300	6461A	3.000
10X45001	10L46130	T10L46130	Leather Series	H	SD39	BG252	AD	DP252	H715345	2.812
10X28751	10L29680	T10L29680	Leather Series	H	SD25	BG200	AD	DP200	45284	2.000
12X36251	10L37500	T10L37500	Leather Series	H	SD33	BG232	AD	DP232	HM212047	2.500
10X45000	10L46250	T10L46250	Leather Series	H	SD39	BG240	AD	DP240	641, HM212049	2.625
10X40000	10L46250	T10L46250	Leather Series	H	SD39	BG252	AD	DP252	6386A	2.812
10X48751	10L49370	T10L49370	Leather Series	H	SD41	BG308	AD	DP308	756A	3.125
10X28750	10L29800	T10L29800	Leather Series	H	SD25	-	NOT REQUIRED		JM205149	2.160
10X25002	10X25002	T10X25002	Leather Series	H	SD32	BG232	AD	DP232	39585	2.500
10X35001	10X35001	T10X35001	Leather Series	H	SD32	BG200	AD	DP200	45284	2.000
10X25620	10X25620	T10X25620	Leather Series	H	SD44	BG236	AD	DP236	6379	2.562
10X26252	10L40470	T10L40470	Leather Series	H	SD35	BG240	AD	DP240	641, HM212049	2.625
10X25001	10L31250	T10L31250	Leather Series	H	SD26	BG232	AD	DP232	559, HM212046	2.500
12X28751	12L29380	T12L29380	Leather Series	H	SD25	BG200	AD	DP200	45284	2.000
10X32500	10L33120	T10L33120	Leather Series	H	SD29	BG216	AD	DP216	39581	2.250
11X27500	10L38750	T10L38750	Leather Series	H	SD33	BG216	AD	DP216	623	2.250
10X21250	10L31870	T10L31870	Leather Series	H	SD26	-	NOT REQUIRED		39578, 4595	2.125
10X31250	10L33590	T10L33590	Leather Series	H	SD30	BG200	AD	DP200	45284, 45285	2.000
12X43750	12L45000	T12L45000	Leather Series	H	SD38	BG324	AD	BG324	665A	3.375
12X46250	12L47340	T12L47340	Leather Series	H	SD19	BG335A	AD	DP335A	HM218248	3.542
12X42504	12L43750	T12L43750	Leather Series	H	SD49	BG332	AD	DP332	HM518445	3.500
12X35003	12L43750	T12L43750	Leather Series	H	SD49	BG332	AD	DP332	593, HM518445	3.500
12X33150	12L36251	T12L36251	Leather Series	H	SD32	BG300	AD	DP300	42687	3.000
12X32470	12L36251	T12L36251	Leather Series	H	SD32	BG300	AD	DP300	42687	3.000
12X31250	12X31250	T12X31250	Leather Series	H	SD29	BG236	AD	DP236	JM511946	2.562
12X32500	12L43751	T12L43751	Leather Series	H	SD49	BG316	AD	DP316	663, 749A	3.250
12X48231	11L49370	T11L49370	Leather Series	H	SD41	BG348	AD	DP348	594A	3.750
12X42501	12L43750	T12L43750	Leather Series	H	SD49	BG332	AD	DP332	593, HM518445	3.500
12X45000	12L49530	T12L49530	Leather Series	H	SD41	BG332	AD	DP332	759	3.500
N/A	11L41250	T11L41250	Leather Series	H	SD48	BG316	AD	DP316	663	3.250
12X35000	12L36250	T12L36250	Leather Series	H	SD31	BG232	AD	DP232	39250	2.500
12X41250	12L49530	T12L49530	Leather Series	H	SD41	BG332	AD	DP332	759	3.500

TIMKEN

The Timken team applies their know-how to improve the reliability and performance of machinery in diverse markets worldwide. The company designs, makes and markets bearings, gear drives, automated lubrication systems, belts, brakes, clutches, chain, couplings, linear motion products and related industrial motion rebuild and repair services.

Stronger. By Design.

www.timken.com/aftermarket