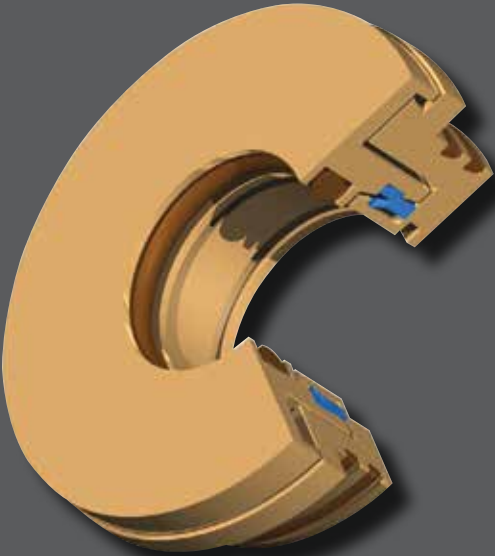
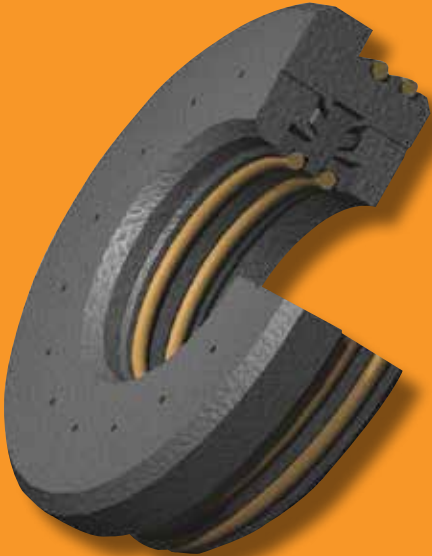


Metallic Isolator



Non-Metallic Isolator
Graphite-Filled PTFE



Non-Metallic Isolator
Glass-Filled PTFE



Bearing Isolator Interchange Manual

Interchanges for Pump, Electric Motor and Split Pillow Block

Contents

Interchanges by Bearing Isolator

J.M. Clipper ProTech™ to Timken.....	1
Goulds to Timken.....	3
Inpro to Timken.....	5
Flowsolve to Timken	9

Interchanges by Motor

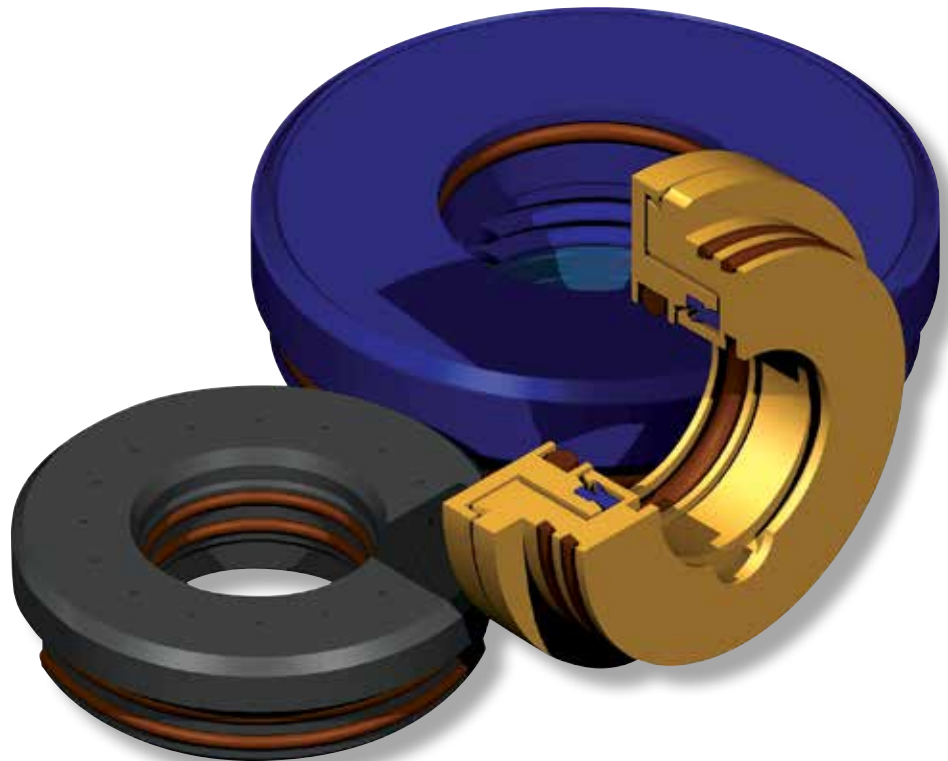
Electric Motor Frames to Timken.....	10
--------------------------------------	----

Interchanges by Pump

Goulds to Timken.....	11
Durco to Timken	13
ITT-AC to Timken	13
Mission to Timken	14
Peerless to Timken	14
Warren to Timken	14

Interchanges by Split Pillow Block

Non-Metallic Isolator (Glass-Filled PTFE).....	16
Non-Metallic Isolator (Graphite-Filled PTFE).....	19



TIMKEN BEARING ISOLATORS

J.M. Clipper ProTech™ to Timken

by ProTech™ Part Number

J.M. ProTech™ Part Number	Dimensions (inches)	Product Code			J.M. ProTech™ Part Number	Dimensions (inches)	Product Code		
		Non-Metallic Isolator (Glass-Filled PTFE)	Metallic Isolator	Non-Metallic Isolator (Graphite-Filled PTFE)			Non-Metallic Isolator (Glass-Filled PTFE)	Metallic Isolator	Non-Metallic Isolator (Graphite-Filled PTFE)
LDE-0875-1625-1-1	0.875 x 1.625	29502-4123	29602-4123	24802-1012	LSE-2750-3750-1-1	2.750 x 3.750	29502-4152	29602-4152	24802-1250
LDE-1125-2000-1-1	1.125 x 2.000	29502-4108	29602-4108	24802-0988	LSE-2875-3875-1-1	2.875 x 3.875	29502-4153	29602-4153	24802-1268
LDE-1375-2835-1-1	1.375 x 2.835	29502-4104	29602-4104	24802-1138	LSE-2875-4125-1-1	2.875 x 4.125	29502-4215	29602-4215	24802-6572
LDE-2625-3675-1-1	2.625 x 3.675	29502-4179	29602-4179	24802-4179	LSE-3000-4000-1-1	3.000 x 4.000	29502-2175	29602-2175	24802-1220
LSE-0875-1625-1-1	0.875 x 1.625	29502-4123	29602-4123	24802-1012	LSE-3125-4125-1-1	3.125 x 4.125	29502-4114	29602-4114	24802-2223
LSE-0937-1500-1-1	0.937 x 1.500	29502-4122	29602-4122	24807-2563	LSE-3250-4000-1-1	3.250 x 4.000	29502-4186	29602-4186	24802-1028
LSE-1000-1750-1-1	1.000 x 1.750	29502-4182	29602-4182	24807-2695	LSE-3250-4250-1-1	3.250 x 4.250	29502-4154	29602-4154	24802-2280
LSE-1000-2000-1-1	1.000 x 2.000	29502-4138	29602-4138	24802-1083	LSE-3313-4125-1-1	3.313 x 4.125	29502-4113	29602-4113	24802-2296
LSE-1125-1750-1-1	1.125 x 1.750	29502-4184	29607-4184	24807-2994	LSE-3375-4375-1-1	3.375 x 4.375	29502-0774	29602-0774	24802-2322
LSE-1125-2000-1-1	1.125 x 2.000	29502-4108	29602-4108	24802-0988	LSE-3500-4375-1-1	3.500 x 4.375	29502-4214	29602-4214	24802-2378
LSE-1125-2125-1-1	1.125 x 2.125	29502-4139	29602-4139	24802-0832	LSE-3500-4500-1-1	3.500 x 4.500	29502-4156	29602-4156	24802-2368
LSE-1250-2000-1-1	1.250 x 2.000	29502-4185	29602-4185	24802-1215	LSE-3625-4625-1-1	3.625 x 4.625	29502-4157	29602-4157	24802-2419
LSE-1250-2250-1-1	1.250 x 2.250	29502-4140	29602-4140	24802-1420	LSE-3750-4750-1-1	3.750 x 4.750	29502-4158	29602-4158	24802-2464
LSE-1375-2125-1-1	1.375 x 2.125	29502-4118	29602-4118	24802-1092	LSE-3875-4875-1-1	3.875 x 4.875	29502-4159	29602-4159	24802-2503
LSE-1375-2375-1-1	1.375 x 2.375	29502-4141	29602-4141	24802-1101	LSE-4000-5000-4-1	4.000 x 5.000	29502-4160	29602-4160	24802-2593
LSE-1437-2437-1-1	1.437 x 2.437	29502-4177	29602-4177	24802-2720	LSE-4000-5375-5-1	4.000 x 5.375	29502-4209	29602-4209	24802-2633
LSE-1500-2500-1-1	1.500 x 2.500	29502-4143	29602-4143	24802-1194	LSE-4125-5125-4-1	4.125 x 5.125	29502-4161	29602-4161	24802-2604
LSE-1625-2625-1-1	1.625 x 2.625	29502-4144	29602-4144	24802-1089	LSE-4250-5250-4-1	4.250 x 5.250	29502-4163	29602-4163	24802-2659
LSE-1750-2375-1-1	1.750 x 2.375	29507-4183	29607-4183	24807-2200	LSE-4375-5375-4-1	4.375 x 5.375	29502-4164	29602-4164	24802-2050
LSE-1750-2750-1-1	1.750 x 2.750	29502-4145	29602-4145	24802-1744	LSE-4500-5250-5-1	4.500 x 5.250	29502-4213	29602-4213	24802-2752
LSE-1750-2875-1-1	1.750 x 2.875	29502-4107	29602-4107	24802-0998	LSE-4500-5500-1-1	4.500 x 5.500	29502-4165	29602-4165	24802-2755
LSE-1875-2625-1-1	1.875 x 2.625	29502-4124	29602-4124	24802-0989	LSE-4500-5500-4-1	4.500 x 5.500	29502-4165	29602-4165	24802-2755
LSE-1875-2750-1-1	1.875 x 2.750	29502-4110	29602-4110	24802-1075	LSE-4500-6000-5-1	4.500 x 6.000	29502-4212	29602-4212	24802-2767
LSE-1875-2875-1-1	1.875 x 2.875	29502-3585	29602-3585	24802-0792	LSE-4625-5625-4-1	4.625 x 5.625	29502-4166	29602-4166	24802-2808
LSE-1937-3000-1-1	1.937 x 3.000	29502-4120	29602-4120	24802-1123	LSE-4750-5750-4-1	4.750 x 5.750	29502-4167	29602-4167	24802-2839
LSE-2000-3000-1-1	2.000 x 3.000	29502-3349	29602-3349	24802-1350	LSE-4750-6000-1-1	4.750 x 6.000	29502-4218	29602-4218	24802-2875
LSE-2000-3125-1-1	2.000 x 3.125	29502-4217	29602-4217	24802-2001	LSE-4875-5875-4-1	4.875 x 5.875	29502-4168	29602-4168	24802-2048
LSE-2062-3000-1-1	2.062 x 3.000	29502-4119	29602-4119	24802-1225	LSE-5000-6000-4-1	5.000 x 6.000	29502-4169	29602-4169	24802-2917
LSE-2125-2875-1-1	2.125 x 2.875	29502-4109	29602-4109	24802-1322	LSE-5000-6000-5-1	5.000 x 6.000	29502-4169	29602-4169	24802-2917
LSE-2125-3000-1-1	2.125 x 3.000	29502-4205	29602-4205	24802-1323	LSE-5000-6250-1-1	5.000 x 6.250	29502-4203	29602-4203	24802-2923
LSE-2125-3125-1-1	2.125 x 3.125	29502-4146	29602-4146	24802-1761	LSE-5125-6125-4-1	5.125 x 6.125	29502-4170	29602-4170	24802-2764
LSE-2187-3000-1-1	2.187 x 3.000	29502-4204	29602-4204	24802-1119	LSE-5250-6250-4-1	5.250 x 6.250	29502-4171	29602-4171	24802-2270
LSE-2250-3250-1-1	2.250 x 3.250	29502-4148	29602-4148	24802-1493	LSE-5250-6500-5-1	5.250 x 6.500	29502-4208	29602-4208	24802-3067
LSE-2375-3250-1-1	2.375 x 3.250	29502-4112	29602-4112	24802-1581	LSE-5375-6375-4-1	5.375 x 6.375	29502-1864	29602-1864	24802-2769
LSE-2375-3375-1-1	2.375 x 3.375	29502-4149	29602-4149	24802-1654	LSE-5500-6500-4-1	5.500 x 6.500	29502-4172	29602-4172	24802-3178
LSE-2500-3250-1-1	2.500 x 3.250	29502-4111	29602-4111	24802-0991	LSM-0480-0700-1-1	48mm x 70mm	29502-4189	29602-4189	24802-1935
LSE-2500-3500-1-1	2.500 x 3.500	29502-4150	29602-4150	24802-1818	LSM-0550-0800-1-1	55mm x 80mm	29502-4190	29602-4190	24802-2005
LSE-2625-3250-1-1	2.625 x 3.250	29507-1976	29607-1976	24807-6573	LSM-0600-0850-1-1	60mm x 85mm	29502-4191	29602-4191	24802-3309
LSE-2625-3625-1-1	2.625 x 3.625	29502-4151	29602-4151	24802-1841	LSM-0700-0950-1-1	70mm x 95mm	29502-4192	29602-4192	24802-3107
LSE-2625-3675-1-1	2.625 x 3.675	29502-4179	29602-4179	24802-1086	LSM-0850-1100-1-1	85mm x 110mm	29502-4193	29602-4193	24802-5650
LSE-2750-3500-1-1	2.750 x 3.500	29502-4187	29602-4187	24802-1238					

Notes:

- 24802 - 0.625" wide
24807 - 0.690" wide
29502 - 0.750" wide
29507 - 0.625" wide
29602 - 0.700" wide
29607 - 0.625" wide
- For LPE design, contact your Timken sales representative
- Interchange match on shaft and bore only.

J.M. Clipper ProTech™ to Timken
by Shaft Size

Shaft Size (inches)	J.M. ProTech™ Part Number	Product Code			Shaft Size (inches)	J.M. ProTech™ Part Number	Product Code		
		Non-Metallic Isolator (Glass-Filled PTFE)	Metallic Isolator	Non-Metallic Isolator (Graphite-Filled PTFE)			Non-Metallic Isolator (Glass-Filled PTFE)	Metallic Isolator	Non-Metallic Isolator (Graphite-Filled PTFE)
0.875 x 1.625	LDE-0875-1625-1-1	29502-4123	29602-4123	24802-1012	2.750 x 3.750	LSE-2750-3750-1-1	29502-4152	29602-4152	24802-1250
0.875 x 1.625	LSE-0875-1625-1-1	29502-4123	29602-4123	24802-1012	2.875 x 3.875	LSE-2875-3875-1-1	29502-4153	29602-4153	24802-1268
0.937 x 1.500	LSE-0937-1500-1-1	29507-4122	29607-4122	24807-2563	2.875 x 4.125	LSE-2875-4125-1-1	29502-4215	29602-4215	24802-6572
1.000 x 1.750	LSE-1000-1750-1-1	29502-4182	29602-4182	24807-2695	3.000 x 4.000	LSE-3000-4000-1-1	29502-2175	29602-2175	24802-1220
1.000 x 2.000	LSE-1000-2000-1-1	29502-4138	29602-4138	24802-1083	3.125 x 4.125	LSE-3125-4125-1-1	29502-4114	29602-4114	24802-2223
1.125 x 1.750	LSE-1125-1750-1-1	29507-4184	29607-4184	24807-2994	3.250 x 4.000	LSE-3250-4000-1-1	29502-4186	29602-4186	24802-1028
1.125 x 2.000	LDE-1125-2000-1-1	29502-4108	29602-4108	24802-0988	3.250 x 4.250	LSE-3250-4250-1-1	29502-4154	29602-4154	24802-2280
1.125 x 2.000	LSE-1125-2000-1-1	29502-4108	29602-4108	24802-0988	3.313 x 4.125	LSE-3313-4125-1-1	29502-4113	29602-4113	24802-2296
1.125 x 2.125	LSE-1125-2125-1-1	29502-4139	29602-4139	24802-0832	3.375 x 4.375	LSE-3375-4375-1-1	29502-0774	29602-0774	24802-2322
1.250 x 2.000	LSE-1250-2000-1-1	29502-4185	29602-4185	24802-1215	3.500 x 4.375	LSE-3500-4375-1-1	29502-4214	29602-4214	24802-2378
1.250 x 2.250	LSE-1250-2250-1-1	29502-4140	29602-4140	24802-1420	3.500 x 4.500	LSE-3500-4500-1-1	29502-4156	29602-4156	24802-2368
1.375 x 2.125	LSE-1375-2125-1-1	29502-4118	29602-4118	24802-1092	3.625 x 4.625	LSE-3625-4625-1-1	29502-4157	29602-4157	24802-2419
1.375 x 2.375	LSE-1375-2375-1-1	29502-4141	29602-4141	24802-1101	3.750 x 4.750	LSE-3750-4750-1-1	29502-4158	29602-4158	24802-2464
1.375 x 2.835	LDE-1375-2835-1-1	29502-4104	29602-4104	24802-1138	3.875 x 4.875	LSE-3875-4875-1-1	29502-4159	29602-4159	24802-2503
1.437 x 2.437	LSE-1437-2437-1-1	29502-4177	29602-4177	24802-2720	4.000 x 5.000	LSE-4000-5000-4-1	29502-4160	29602-4160	24802-2593
1.500 x 2.500	LSE-1500-2500-1-1	29502-4143	29602-4143	24802-1194	4.000 x 5.375	LSE-4000-5375-5-1	29502-4209	29602-4209	24802-2633
1.625 x 2.625	LSE-1625-2625-1-1	29502-4144	29602-4144	24802-1089	4.125 x 5.125	LSE-4125-5125-4-1	29502-4161	29602-4161	24802-2604
1.750 x 2.375	LSE-1750-2375-1-1	29507-4183	29607-4183	24807-2200	4.250 x 5.250	LSE-4250-5250-4-1	29502-4163	29602-4163	24802-2659
1.750 x 2.750	LSE-1750-2750-1-1	29502-4145	29602-4145	24802-1744	4.375 x 5.375	LSE-4375-5375-4-1	29502-4164	29602-4164	24802-2050
1.750 x 2.875	LSE-1750-2875-1-1	29502-4107	29602-4107	24802-0998	4.500 x 5.250	LSE-4500-5250-5-1	29502-4213	29602-4213	24802-2752
1.875 x 2.625	LSE-1875-2625-1-1	29502-4124	29602-4124	24802-0989	4.500 x 5.500	LSE-4500-5500-1-1	29502-4165	29602-4165	24802-2755
1.875 x 2.750	LSE-1875-2750-1-1	29502-4110	29602-4110	24802-1075	4.500 x 5.500	LSE-4500-5500-4-1	29502-4165	29602-4165	24802-2755
1.875 x 2.875	LSE-1875-2875-1-1	29502-3585	29602-3585	24802-0792	4.500 x 6.000	LSE-4500-6000-5-1	29502-4212	29602-4212	24802-2767
1.937 x 3.000	LSE-1937-3000-1-1	29502-4120	29602-4120	24802-1123	4.625 x 5.625	LSE-4625-5625-4-1	29502-4166	29602-4166	24802-2808
2.000 x 3.000	LSE-2000-3000-1-1	29502-3349	29602-3349	24802-1350	4.750 x 5.750	LSE-4750-5750-4-1	29502-4167	29602-4167	24802-2839
2.000 x 3.125	LSE-2000-3125-1-1	29502-4217	29602-4217	24802-2001	4.750 x 6.000	LSE-4750-6000-1-1	29502-4218	29602-4218	24802-2875
2.062 x 3.000	LSE-2062-3000-1-1	29502-4119	29602-4119	24802-1225	4.875 x 5.875	LSE-4875-5875-4-1	29502-4168	29602-4168	24802-2048
2.125 x 2.875	LSE-2125-2875-1-1	29502-4109	29602-4109	24802-1322	5.000 x 6.000	LSE-5000-6000-4-1	29502-4169	29602-4169	24802-2917
2.125 x 3.000	LSE-2125-3000-1-1	29502-4205	29602-4205	24802-1323	5.000 x 6.000	LSE-5000-6000-5-1	29502-4169	29602-4169	24802-2917
2.125 x 3.125	LSE-2125-3125-1-1	29502-4146	29602-4146	24802-1761	5.000 x 6.250	LSE-5000-6250-1-1	29502-4203	29602-4203	24802-2923
2.187 x 3.000	LSE-2187-3000-1-1	29502-4204	29602-4204	24802-1119	5.125 x 6.125	LSE-5125-6125-4-1	29502-4170	29602-4170	24802-2764
2.250 x 3.250	LSE-2250-3250-1-1	29502-4148	29602-4148	24802-1493	5.250 x 6.250	LSE-5250-6250-4-1	29502-4171	29602-4171	24802-2270
2.375 x 3.250	LSE-2375-3250-1-1	29502-4112	29602-4112	24802-1581	5.250 x 6.500	LSE-5250-6500-5-1	29502-4208	29602-4208	24802-3067
2.375 x 3.375	LSE-2375-3375-1-1	29502-4149	29602-4149	24802-1654	5.375 x 6.375	LSE-5375-6375-4-1	29502-1864	29602-1864	24802-2769
2.500 x 3.250	LSE-2500-3250-1-1	29502-4111	29602-4111	24802-0991	5.500 x 6.500	LSE-5500-6500-4-1	29502-4172	29602-4172	24802-3178
2.500 x 3.500	LSE-2500-3500-1-1	29502-4150	29602-4150	24802-1818	48mm x 70mm	LSM-0480-0700-1-1	29502-4189	29602-4189	24802-1935
2.625 x 3.250	LSE-2625-3250-1-1	29507-1976	29607-1976	24807-6573	55mm x 80mm	LSM-0550-0800-1-1	29502-4190	29602-4190	24802-2005
2.625 x 3.625	LSE-2625-3625-1-1	29502-4151	29602-4151	24802-1841	60mm x 85mm	LSM-0600-0850-1-1	29502-4191	29602-4191	24802-3309
2.625 x 3.675	LDE-2625-3675-1-1	29502-4179	29602-4179	24802-4179	70mm x 95mm	LSM-0700-0950-1-1	29502-4192	29602-4192	24802-3107
2.625 x 3.675	LSE-2625-3675-1-1	29502-4179	29602-4179	24802-1086	85mm x 110mm	LSM-0850-1100-1-1	29502-4193	29602-4193	24802-5650
2.750 x 3.500	LSE-2750-3500-1-1	29502-4187	29602-4187	24802-1238					

Notes:

- 24802 - 0.625" wide
24807 - 0.690" wide
29502 - 0.750" wide
29507 - 0.625" wide
29602 - 0.700" wide
29607 - 0.625" wide
- For LPE design, contact your Timken sales representative
- Interchange match on shaft and bore only.

TIMKEN BEARING ISOLATORS

Goulds to Timken

by Goulds Part Number

Goulds Part Number	Dimensions (inches)	Product Code			Goulds Part Number	Dimensions (inches)	Product Code		
		Non-Metallic Isolator (Glass-Filled PTFE)	Metallic Isolator	Non-Metallic Isolator (Graphite-Filled PTFE)			Non-Metallic Isolator (Glass-Filled PTFE)	Metallic Isolator	Non-Metallic Isolator (Graphite-Filled PTFE)
A04591A127	1.375 x 2.835	29502-4104	29602-4104	24802-1138	D04584A16	1.375 x 2.125	29502-4118	29602-4118	24802-1092
A04591A128	0.875 x 1.250	29507-4106	29607-4106	24807-3196	D04584A17	2.125 x 3.000	29502-4205	29602-4205	24802-1323
A04591A129	1.750 x 2.875	29502-4107	29602-4107	24802-0998	D04584A18	2.500 x 3.250	29502-4111	29602-4111	24802-0991
A04591A130	1.125 x 2.000	29502-4108	29602-4108	24802-0988	D04584A19	2.375 x 3.250	29502-4112	29602-4112	24802-1581
A04591A131	2.125 x 2.875	29502-4109	29602-4109	24802-1322	04584A21	3.125 x 4.125	29502-4114	29602-4114	24802-2223
A04591A132	1.875 x 2.750	29502-4110	29602-4110	24802-1075	D04584A23	4.125 x 5.250	29502-4116	29602-4116	24802-2605
A04591A133	2.375 x 3.250	29502-4112	29602-4112	24802-1581	D04584A24	5.000 x 6.250	29502-4203	29602-4203	24802-2923
A04591A135	2.500 x 3.250	29502-4111	29602-4111	24802-0991	D04584A25	1.062 x 1.643	29507-4206	29607-4206	24807-4389
A05482A01	1.500 x 2.125	29507-1118	29607-1118	24807-3410	D04584A26	0.937 x 1.500	29507-4122	29607-4122	24807-2563
A05482A02	1.375 x 2.125	29502-4118	29602-4118	24802-1092	D04584A27	1.437 x 2.437	29502-4177	29602-4177	24802-2720
A05482A03	1.375 x 2.125	29502-4118	29602-4118	24802-1092	D04584A28	2.062 x 3.000	29502-4119	29602-4119	24802-1225
A05482A04	1.375 x 2.835	29502-4104	29602-4104	24802-1138	D04584A29	1.937 x 3.000	29502-4120	29602-4120	24802-1123
A05482A05	0.875 x 1.250	29507-4106	29607-4106	24807-3196	D04584A30	2.062 x 3.000	29502-4119	29602-4119	24802-1225
A05482A06	1.750 x 2.875	29502-4107	29602-4107	24802-0998	D04584A31	1.937 x 3.000	29502-4120	29602-4120	24802-1123
A05482A07	1.250 x 2.000	29502-4185	29602-4185	24802-1215	D04585A04	1.750 x 2.875	29502-4107	29602-4107	24802-0998
D04584A	2.625 x 3.250	29507-1976	29607-1976	24807-6573	D04585A05	1.875 x 2.750	29502-4110	29602-4110	24802-1075
D04584A01	0.875 x 1.250	29507-4106	29607-4106	24807-3196	D04585A13	85mm x 110mm	29502-4193	29602-4193	24802-5650
D04584A02	1.375 x 2.835	29502-4104	29602-4104	24802-1138	D04585A20	3.312 x 4.125	29502-4113	29602-4113	24802-2296
D04584A03	1.125 x 2.000	29502-4108	29602-4108	24802-0988	D04585A22	4.313 x 5.500	29502-4115	29602-4115	24802-2700
D04584A06	2.125 x 2.875	29502-4109	29602-4109	24802-1322	D08717A01	0.875 x 1.250	29507-4106	29607-4106	24807-3196
D04584A07	2.375 x 3.250	29502-4112	29602-4112	24802-1581	D08717A02	1.375 x 2.835	29502-4104	29602-4104	24802-1138
D04584A08	2.500 x 3.250	29502-4111	29602-4111	24802-0991	D08717A03	1.125 x 2.000	29502-4108	29602-4108	24802-0988
D04584A09	48mm x 70mm	29502-4189	29602-4189	24802-1935	D08717A04	1.750 x 2.875	29502-4107	29602-4107	24802-0998
D04584A10	55mm x 80mm	29502-4190	29602-4190	24802-2005	D08717A05	1.875 x 2.750	29502-4110	29602-4110	24802-1075
D04584A11	60mm x 85mm	29502-4191	29602-4191	24802-3309	D08717A06	2.125 x 2.875	29502-4109	29602-4109	24802-1322
D04584A12	70mm x 95mm	29502-4192	29602-4192	24802-3107	D08717A07	2.375 x 3.250	29502-4112	29602-4112	24802-1581
D04584A14	1.500 x 2.125	29507-1118	29607-1118	24807-3410	D08717A08	2.500 x 3.250	29502-4111	29602-4111	24802-0991
D04584A15	2.187 x 3.000	29502-4204	29602-4204	24802-1119					

Notes:

1. 24802 - 0.625" wide
24807 - 0.690" wide
29502 - 0.750" wide
29507 - 0.625" wide
29602 - 0.700" wide
29607 - 0.625" wide
2. Interchange match on shaft and bore only.

Goulds to Timken

by Shaft Size

Shaft Size (inches)	Goulds Part Number	Product Code			Shaft Size (inches)	Goulds Part Number	Product Code		
		Non-Metallic Isolator (Glass-Filled PTFE)	Metallic Isolator	Non-Metallic Isolator (Graphite-Filled PTFE)			Non-Metallic Isolator (Glass-Filled PTFE)	Metallic Isolator	Non-Metallic Isolator (Graphite-Filled PTFE)
0.875 x 1.250	A04591A128	29507-4106	29607-4106	24807-3196	1.937 x 3.000	D04584A31	29502-4120	29602-4120	24802-1123
0.875 x 1.250	A05482A05	29507-4106	29607-4106	24807-3196	2.062 x 3.000	D04584A28	29502-4119	29602-4119	24802-1225
0.875 x 1.250	D04584A01	29507-4106	29607-4106	24807-3196	2.062 x 3.000	D04584A30	29502-4119	29602-4119	24802-1225
0.875 x 1.250	D08717A01	29507-4106	29607-4106	24807-3196	2.125 x 2.875	A04591A131	29502-4109	29602-4109	24802-1322
0.937 x 1.500	D04584A26	29507-4122	29607-4122	24807-2563	2.125 x 2.875	D04584A06	29502-4109	29602-4109	24802-1322
1.062 x 1.643	D04584A25	29507-4206	29607-4206	24807-4389	2.125 x 2.875	D08717A06	29502-4109	29602-4109	24802-1322
1.125 x 2.000	A04591A130	29502-4108	29602-4108	24802-0988	2.125 x 3.000	D04584A17	29502-4205	29602-4205	24802-1323
1.125 x 2.000	D04584A03	29502-4108	29602-4108	24802-0988	2.187 x 3.000	D04584A15	29502-4204	29602-4204	24802-1119
1.125 x 2.000	D08717A03	29502-4108	29602-4108	24802-0988	2.375 x 3.250	A04591A133	29502-4112	29602-4112	24802-1581
1.250 x 2.000	A05482A07	29502-4185	29602-4185	24802-1215	2.375 x 3.250	D04584A07	29502-4112	29602-4112	24802-1581
1.375 x 2.125	A05482A02	29502-4118	29602-4118	24802-1092	2.375 x 3.250	D04584A19	29502-4112	29602-4112	24802-1581
1.375 x 2.125	A05482A03	29502-4118	29602-4118	24802-1092	2.375 x 3.250	D08717A07	29502-4112	29602-4112	24802-1581
1.375 x 2.125	D04584A16	29502-4118	29602-4118	24802-1092	2.500 x 3.250	A04591A135	29502-4111	29602-4111	24802-0991
1.375 x 2.835	A04591A127	29502-4104	29602-4104	24802-1138	2.500 x 3.250	D04584A08	29502-4111	29602-4111	24802-0991
1.375 x 2.835	A05482A04	29502-4104	29602-4104	24802-1138	2.500 x 3.250	D04584A18	29502-4111	29602-4111	24802-0991
1.375 x 2.835	D04584A02	29502-4104	29602-4104	24802-1138	2.500 x 3.250	D08717A08	29502-4111	29602-4111	24802-0991
1.375 x 2.835	D08717A02	29502-4104	29602-4104	24802-1138	2.625 x 3.250	D04584A	29507-1976	29607-1976	24807-6573
1.437 x 2.437	D04584A27	29502-4177	29602-4177	24802-2720	3.125 x 4.125	D04584A21	29502-4114	29602-4114	24802-2223
1.500 x 2.125	A05482A01	29507-1118	29607-1118	24807-3410	3.312 x 4.125	D04585A20	29502-4113	29602-4113	24802-2296
1.500 x 2.125	D04584A14	29507-1118	29607-1118	24807-3410	4.125 x 5.250	D04584A23	29502-4116	29602-4116	24802-2605
1.750 x 2.875	A04591A129	29502-4107	29602-4107	24802-0998	4.313 x 5.500	D04585A22	29502-4115	29602-4115	24802-2700
1.750 x 2.875	A05482A06	29502-4107	29602-4107	24802-0998	5.000 x 6.250	D04584A24	29502-4203	29602-4203	24802-2923
1.750 x 2.875	D04585A04	29502-4107	29602-4107	24802-0998	48mm x 70mm	D04584A09	29502-4189	29602-4189	24802-1935
1.750 x 2.875	D08717A04	29502-4107	29602-4107	24802-0998	55mm x 80mm	D04584A10	29502-4190	29602-4190	24802-2005
1.875 x 2.750	A04591A132	29502-4110	29602-4110	24802-1075	60mm x 85mm	D04584A11	29502-4191	29602-4191	24802-3309
1.875 x 2.750	D04585A05	29502-4110	29602-4110	24802-1075	70mm x 95mm	D04584A12	29502-4192	29602-4192	24802-3107
1.875 x 2.750	D08717A05	29502-4110	29602-4110	24802-1075	85mm x 110mm	D04585A13	29502-4193	29602-4193	24802-5650
1.937 x 3.000	D04584A29	29502-4120	29602-4120	24802-1123					

Notes:

- 24802 - 0.625" wide
24807 - 0.690" wide
29502 - 0.750" wide
29507 - 0.625" wide
29602 - 0.700" wide
29607 - 0.625" wide
- Interchange match on shaft and bore only.

TIMKEN BEARING ISOLATORS

Inpro to Timken
by Inpro Part Number

Inpro Part Number	Dimensions (inches)	Product Code			Inpro Part Number	Dimensions (inches)	Product Code		
		Non-Metallic Isolator (Glass-Filled PTFE)	Metallic Isolator	Non-Metallic Isolator (Graphite-Filled PTFE)			Non-Metallic Isolator (Glass-Filled PTFE)	Metallic Isolator	Non-Metallic Isolator (Graphite-Filled PTFE)
1700-A-04039-0	2.244 x 3.268	29502-6656	29602-6656	24802-1981	M0041	3.438 x 4.438	29502-4288	29602-4288	24802-2577
1700-A-06023-0	3.583 x 4.606	29502-6652	29602-6652	Contact Timken	M0042	3.500 x 4.500	29502-4156	29602-4156	24802-2368
1700-A-08420-0	3.346 x 4.370	29502-6657	29602-6657	Contact Timken	M0043	3.563 x 4.563	29502-4289	29602-4289	24802-2743
1770-A-08174-0	2.638 x 3.661	29502-6655	29602-6655	Contact Timken	M0044	3.625 x 4.625	29502-4157	29602-4157	24802-2419
1787-A-25088-0	1.000 x 1.828	29502-6585	29602-6585	Contact Timken	M0045	3.688 x 4.688	29502-4290	29602-4290	24802-2744
1798-A-02877-0	1.260 x 2.283	29502-6651	29602-6651	Contact Timken	M0046	3.750 x 4.750	29502-4158	29602-4158	24802-2464
1798-A-10177-0	1.850 x 2.874	29502-5507	29602-5507	Contact Timken	M0047	3.812 x 4.812	29502-4291	29602-4291	24802-2745
1798-A-11512-0	2.087 x 3.110	29502-6653	29602-6653	Contact Timken	M0048	3.875 x 4.875	29502-4159	29602-4159	24802-2503
1798-A-15076-0	2.677 x 3.425	29502-6654	29602-6654	Contact Timken	M0049	3.938 x 4.938	29502-4292	29602-4292	24802-1144
1901-A-26277-6	1.256 x 1.375 x 2.062	Contact Timken	29697-0003	Contact Timken	M0050	4.000 x 5.000	29502-4160	29602-4160	24802-2593
M000X	0.625 x 1.625	29502-4266	29602-4266	24802-2710	M0051	4.063 x 5.063	29502-4293	29602-4293	24802-2746
M0000	0.875 x 1.875	29502-4267	29602-4267	24802-2711	M0052	4.125 x 5.125	29502-4161	29602-4161	24802-2604
M0001	0.938 x 1.938	29502-4270	29602-4270	24802-2714	M0053	4.188 x 5.188	29502-4295	29602-4295	24802-2747
M0002	1.000 x 2.000	29502-4138	29602-4138	24802-1083	M0054	4.250 x 5.250	29502-4163	29602-4163	24802-2659
M0003	1.063 x 2.063	29502-4271	29602-4271	24802-2716	M0055	4.313 x 5.313	29502-4296	29602-4296	24802-2042
M0004	1.125 x 2.125	29502-4139	29602-4139	24802-0832	M0056	4.375 x 5.375	29502-4164	29602-4164	24802-2050
M0005	1.188 x 2.188	29502-4272	29602-4272	24802-2718	M0057	4.438 x 5.438	29502-4297	29602-4297	24802-2748
M0006	1.250 x 2.250	29502-4140	29602-4140	24802-1420	M0058	4.500 x 5.500	29502-4165	29602-4165	24802-2755
M0007	1.313 x 2.313	29502-4273	29602-4273	24802-2719	M0059	4.563 x 5.563	29502-2051	29602-2051	24802-2051
M0008	1.375 x 2.375	29502-4141	29602-4141	24802-1101	M0060	4.625 x 5.625	29502-4166	29602-4166	24802-2808
M0009	1.438 x 2.438	29502-4177	29602-4177	24802-2720	M0061	4.688 x 5.688	29502-4298	29602-4298	24802-2750
M0010	1.500 x 2.500	29502-4143	29602-4143	24802-1194	M0062	4.750 x 5.750	29502-4167	29602-4167	24802-2839
M0011	1.563 x 2.563	29502-4274	29602-4274	24802-2722	M0063	4.812 x 5.812	29502-4299	29602-4299	24802-2751
M0012	1.625 x 2.625	29502-4144	29602-4144	24802-1089	M0064	4.875 x 5.875	29502-4168	29602-4168	24802-2048
M0013	1.688 x 2.688	29502-4275	29602-4275	24802-2723	M0065	4.938 x 5.938	29502-4300	29602-4300	24802-2539
M0014	1.750 x 2.750	29502-4145	29602-4145	24802-1744	M0066	5.000 x 6.000	29502-4169	29602-4169	24802-2917
M0015	1.812 x 2.812	29502-4276	29602-4276	24802-2729	M0067	5.063 x 6.063	29502-4301	29602-4301	24802-2756
M0016	1.875 x 2.875	29502-3585	29602-3585	24802-0792	M0068	5.125 x 6.125	29502-4170	29602-4170	24802-2764
M0017	1.938 x 2.938	29502-4277	29602-4277	24802-2730	M0069	5.188 x 6.188	29502-4302	29602-4302	24802-2766
M0018	2.000 x 3.000	29502-3349	29602-3349	24802-1350	M0070	5.250 x 6.250	29502-4171	29602-4171	24802-2270
M0019	2.063 x 3.063	29502-4278	29602-4278	24802-2735	M0071	5.313 x 6.313	29502-4303	29602-4303	24802-2768
M0020	2.125 x 3.125	29502-4146	29602-4146	24802-1761	M0072	5.375 x 6.375	29502-1864	29602-1864	24802-2769
M0021	2.187 x 3.187	29502-4279	29602-4279	24802-1353	M0073	5.438 x 6.438	29502-4304	29602-4304	24802-2770
M0022	2.250 x 3.250	29502-4148	29602-4148	24802-1493	M0074	5.500 x 6.500	29502-4172	29602-4172	24802-3178
M0023	2.313 x 3.313	29502-4257	29602-4257	24802-1351	M0075	5.563 x 6.563	29502-4305	29602-4305	24802-2771
M0024	2.375 x 3.375	29502-4149	29602-4149	24802-1654	M0076	5.625 x 6.625	29502-4173	29602-4173	24802-1177
M0025	2.437 x 3.437	29502-4280	29602-4280	24802-1641	M0077	5.688 x 6.688	29502-4306	29602-4306	24802-2774
M0026	2.500 x 3.500	29502-4150	29602-4150	24802-1818	M0078	5.750 x 6.750	29502-4174	29602-4174	24802-3277
M0027	2.562 x 3.562	29502-4281	29602-4281	24802-1251	M0079	5.812 x 6.812	29502-4307	29602-4307	24802-2776
M0028	2.625 x 3.625	29502-4151	29602-4151	24802-1841	M0080	5.875 x 6.875	29502-4175	29602-4175	24802-2777
M0029	2.688 x 3.688	29502-4282	29602-4282	24802-2736	M0081	5.938 x 6.938	29502-4308	29602-4308	24802-2781
M0030	2.750 x 3.750	29502-4152	29602-4152	24802-1250	M0082	6.000 x 7.000	29502-3362	29602-3362	24802-3357
M0031	2.812 x 3.812	29502-4283	29602-4283	24802-2738	M0083	6.063 x 7.063	29502-4309	29602-4309	24802-2782
M0032	2.875 x 3.875	29502-4153	29602-4153	24802-1268	M0084	6.125 x 7.125	29502-4310	29602-4310	24802-3377
M0033	2.938 x 3.938	29502-4284	29602-4284	24802-2083	M0085	6.188 x 7.188	29502-4311	29602-4311	24802-2783
M0034	3.000 x 4.000	29502-2175	29602-2175	24802-1220	M0086	6.250 x 7.250	29502-4312	29602-4312	24802-2786
M0035	3.063 x 4.063	29502-4285	29602-4285	24802-2201	M0087	6.313 x 7.313	29502-4313	29602-4313	24802-2789
M0036	3.125 x 4.125	29502-4114	29602-4114	24802-2223	M0088	6.375 x 7.375	29502-4314	29602-4314	24802-2792
M0037	3.188 x 4.188	29502-4286	29602-4286	24802-2741	M0089	6.438 x 7.438	29502-4315	29602-4315	24802-2795
M0038	3.250 x 4.250	29502-4154	29602-4154	24802-2280	M0090	6.500 x 7.500	29502-4316	29602-4316	24802-3426
M0039	3.313 x 4.313	29502-4287	29602-4287	24802-2742	P0002	0.625 x 1.250	29507-4317	29607-4317	24807-2828
M0040	3.375 x 4.375	29502-0774	29602-0774	24802-2322	P0003	1.375 x 2.063	29507-4318	29607-4318	24807-2692

Continued on page 6

Notes:

- 24802 - 0.625" wide
24807 - 0.690" wide
29502 - 0.750" wide
29507 - 0.625" wide
29602 - 0.700" wide
29607 - 0.625" wide
- Interchange match on shaft and bore only.

Inpro to Timken
by Inpro Part Number

Inpro Part Number	Dimensions (inches)	Product Code			Inpro Part Number	Dimensions (inches)	Product Code		
		Non-Metallic Isolator (Glass-Filled PTFE)	Metallic Isolator	Non-Metallic Isolator (Graphite-Filled PTFE)			Non-Metallic Isolator (Glass-Filled PTFE)	Metallic Isolator	Non-Metallic Isolator (Graphite-Filled PTFE)
P0005	1.750 x 2.500	29502-4319	29602-4319	24802-1026	P0046	1.938 x 3.000	29502-4120	29602-4120	24802-1123
P0006	1.375 x 2.437	29502-4320	29602-4320	24802-2694	P0048	1.625 x 2.625	29502-4144	29602-4144	24802-1089
P0007	2.125 x 2.875	29502-4109	29602-4109	24802-1322	P0056	3.250 x 4.000	29502-4186	29602-4186	24802-1028
P0008	1.375 x 2.125	29502-4118	29602-4118	24802-1092	P0057	1.185 x 2.442	29502-4336	29602-4336	24802-2857
P0009	2.500 x 3.250	29502-4111	29602-4111	24802-0991	P0058	2.155 x 2.875	29507-4337	29607-4337	24807-2866
P0010	1.125 x 1.625	29507-2273	29607-2273	24807-2829	P0060	1.750 x 2.375	29507-4183	29607-4183	24807-2200
P0012	1.125 x 1.875	29502-4322	29602-4322	24802-1152	P0061	2.187 x 3.187	29502-4279	29602-4279	24802-2489
P0013	2.125 x 3.000	29502-4205	29602-4205	24802-1323	P0062	2.280 x 3.280	29502-4338	29602-4338	24802-2312
P0014	1.750 x 2.625	29502-4323	29602-4323	24802-1062	P0064	2.250 x 3.250	29502-4148	29602-4148	24802-1493
P0015	2.750 x 3.500	29502-4187	29602-4187	24802-1238	P0073	4.500 x 5.250	29502-4213	29602-4213	24802-2755
P0016	2.375 x 3.125	29502-4324	29602-4324	24802-1645	P0074	3.500 x 4.375	29502-4214	29602-4214	24802-2378
P0017	3.400 x 4.400	29502-4325	29602-4325	24802-2832	P0080	1.375 x 2.125	29502-4118	29602-4118	24802-1092
P0018	2.000 x 2.750	29502-4326	29602-4326	24802-1249	P0086	0.875 x 1.500	29507-4339	29607-4339	24807-2688
P0019	1.625 x 2.500	29502-4327	29602-4327	24802-2987	P0088	1.000 x 1.750	29502-4182	29602-4182	24807-2695
P0020	3.000 x 3.875	29502-4328	29602-4328	24802-2172	P0090	0.875 x 1.625	29502-4123	29602-4123	24807-2861
P0021	1.125 x 2.000	29502-4108	29602-4108	24802-0988	P0097	1.875 x 2.625	29502-4124	29602-4124	24802-0989
P0024	1.125 x 2.000	29502-4108	29602-4108	24802-0988	P0099	1.125 x 2.441	29502-4181	29602-4181	24802-2859
P0025	2.625 x 3.677	29502-4125	29602-4125	24802-1086	P0100	1.500 x 2.000	29507-4130	29607-4130	24807-2578
P0026	2.625 x 3.688	29502-4126	29602-4126	24802-1087	P0262	1.875 x 2.750	29502-4110	29602-4110	24802-1075
P0027	1.375 x 3.125	29502-4329	29602-4329	24802-1105	P0383	1.375 x 2.835	29502-4104	29602-4104	24802-1138
P0028	0.875 x 1.250	29507-4106	29607-4106	24807-3196	P0859	4.500 x 6.000	29502-4212	29602-4212	24802-2767
P0029	1.750 x 2.875	29502-4107	29602-4107	24802-0998	P1189	5.875 x 7.125	29502-4211	29602-4211	24802-3324
P0030	2.375 x 3.250	29502-4112	29602-4112	24802-1581	P1339	6.250 x 7.750	29502-3405	29602-3405	24802-2253
P0031	1.875 x 2.686	29502-4330	29602-4330	24807-2834	P1639	1.250 x 1.750	29507-4340	29607-4340	24807-1782
P0032	2.875 x 4.000	29502-4331	29602-4331	24802-2843	P1738	0.875 x 1.625	29502-4123	29602-4123	24807-2861
P0033	2.625 x 3.484	29502-4332	29602-4332	24802-2844	P1739	1.125 x 2.000	29502-4108	29602-4108	24802-0988
P0035	3.312 x 4.125	29502-4113	29602-4113	24802-2296	P1740	1.500 x 2.000	29507-4130	29607-4130	24807-2578
P0036	3.125 x 4.125	29502-4114	29602-4114	24802-2223	P1741	2.625 x 3.677	29502-4125	29602-4125	24802-1086
P0037	4.313 x 5.500	29502-4115	29602-4115	24802-2700	P1849	5.000 x 6.000	29502-4169	29602-4169	24802-2917
P0038	4.125 x 5.250	29502-4116	29602-4116	24802-2605	P1850	3.500 x 4.375	29502-4214	29602-4214	24802-2378
P0039	1.060 x 1.625	29507-4333	29607-4333	24807-2848	P1874	5.250 x 6.500	29502-4208	29602-4208	24802-3067
P0040	0.937 x 1.500	29507-4122	29607-4122	24807-2563	P1875	4.000 x 5.375	29502-4209	29602-4209	24802-2633
P0041	1.438 x 2.250	29502-4117	29602-4117	24802-2850	P2047	1.750 x 2.500	29502-4319	29602-4319	24807-2693
P0042R	1.125 x 1.562	29507-4334	29607-4334	24807-2852	P2268	1.375 x 2.835	29502-4104	29602-4104	24802-1138
P0045	2.065 x 3.000	29502-4335	29602-4335	24802-2854	P2849	2.125 x 2.875	29502-4109	29602-4109	24802-1322

Notes:

1. 24802 - 0.625" wide
24807 - 0.690" wide
29502 - 0.750" wide
29507 - 0.625" wide
29602 - 0.700" wide
29607 - 0.625" wide
2. Interchange match on shaft and bore only.

TIMKEN BEARING ISOLATORS

Inpro to Timken
by Shaft Size

Shaft Size (inches)	Inpro Part Number	Product Code			Shaft Size (inches)	Inpro Part Number	Product Code		
		Non-Metallic Isolator (Glass-Filled PTFE)	Metallic Isolator	Non-Metallic Isolator (Graphite-Filled PTFE)			Non-Metallic Isolator (Glass-Filled PTFE)	Metallic Isolator	Non-Metallic Isolator (Graphite-Filled PTFE)
0.625 x 1.250	P0002	29507-4317	29607-4317	24807-2828	1.750 x 2.875	P0029	29502-4107	29602-4107	24802-0998
0.625 x 1.625	M000X	29502-4266	29602-4266	24802-2710	1.812 x 2.812	M0015	29502-4276	29602-4276	24802-2729
0.875 x 1.250	P0028	29507-4106	29607-4106	24807-3196	1.850 x 2.874	1798-A-10177-0	29502-5507	29602-5507	Contact Timken
0.875 x 1.500	P0086	29507-4339	29607-4339	24807-2688	1.875 x 2.625	P0097	29502-4124	29602-4124	24802-0989
0.875 x 1.625	P0090	29502-4123	29602-4123	24807-2861	1.875 x 2.686	P0031	29502-4330	29602-4330	24807-2834
0.875 x 1.625	P1738	29502-4123	29602-4123	24807-2861	1.875 x 2.750	P0262	29502-4110	29602-4110	24802-1075
0.875 x 1.875	M0000	29502-4267	29602-4267	24802-2711	1.875 x 2.875	M0016	29502-3585	29602-3585	24802-0792
0.937 x 1.500	P0040	29507-4122	29607-4122	24807-2563	1.938 x 2.938	M0017	29502-4277	29602-4277	24802-2730
0.938 x 1.938	M0001	29502-4270	29602-4270	24802-2714	1.938 x 3.000	P0046	29502-4120	29602-4120	24802-1123
1.000 x 1.750	P0088	29502-4182	29602-4182	24807-2695	2.000 x 2.750	P0018	29502-4326	29602-4326	24802-1249
1.000 x 1.828	1787-A-25088-0	29502-6585	29602-6585	Contact Timken	2.000 x 3.000	M0018	29502-3349	29602-3349	24802-1350
1.000 x 2.000	M0002	29502-4138	29602-4138	24802-1083	2.063 x 3.063	M0019	29502-4278	29602-4278	24802-2735
1.060 x 1.625	P0039	29507-4333	29607-4333	24807-2848	2.065 x 3.000	P0045	29502-4335	29602-4335	24802-2854
1.063 x 2.063	M0003	29502-4271	29602-4271	24802-2716	2.087 x 3.110	1798-A-11512-0	29502-6653	29602-6653	Contact Timken
1.125 x 1.562	P0042R	29507-4334	29607-4334	24807-2852	2.125 x 2.875	P0007	29502-4109	29602-4109	24802-1322
1.125 x 1.625	P0010	29507-2273	29607-2273	24807-2829	2.125 x 2.875	P2849	29502-4109	29602-4109	24802-1322
1.125 x 1.875	P0012	29502-4322	29602-4322	24802-1152	2.125 x 3.000	P0013	29502-4205	29602-4205	24802-1323
1.125 x 2.000	P0021	29502-4108	29602-4108	24802-0988	2.125 x 3.125	M0020	29502-4146	29602-4146	24802-1761
1.125 x 2.000	P0024	29502-4108	29602-4108	24802-0988	2.155 x 2.875	P0058	29507-4337	29607-4337	24807-2866
1.125 x 2.000	P1739	29502-4108	29602-4108	24802-0988	2.187 x 3.187	M0021	29502-4279	29602-4279	24802-1353
1.125 x 2.125	M0004	29502-4139	29602-4139	24802-0832	2.187 x 3.187	P0061	29502-4279	29602-4279	24802-2489
1.125 x 2.441	P0099	29502-4181	29602-4181	24802-2859	2.244 x 3.268	1700-A-04039-0	29502-6656	29602-6656	24802-1981
1.185 x 2.442	P0057	29502-4336	29602-4336	24802-2857	2.250 x 3.250	M0022	29502-4148	29602-4148	24802-1493
1.188 x 2.188	M0005	29502-4272	29602-4272	24802-2718	2.250 x 3.250	P0064	29502-4148	29602-4148	24802-1493
1.250 x 1.750	P1639	29507-4340	29607-4340	24807-1782	2.280 x 3.280	P0062	29502-4338	29602-4338	24802-2312
1.250 x 2.250	M0006	29502-4140	29602-4140	24802-1420	2.313 x 3.313	M0023	29502-4257	29602-4257	24802-1351
1.256 x 1.375 x 2.062	1901-A-26277-6	Contact Timken	29697-0003	Contact Timken	2.375 x 3.125	P0016	29502-4324	29602-4324	24802-1645
1.260 x 2.283	1798-A-02877-0	29502-6651	29602-6651	Contact Timken	2.375 x 3.250	P0030	29502-4112	29602-4112	24802-1581
1.313 x 2.313	M0007	29502-4273	29602-4273	24802-2719	2.375 x 3.375	M0024	29502-4149	29602-4149	24802-1654
1.375 x 2.063	P0003	29507-4318	29607-4318	24807-2692	2.437 x 3.437	M0025	29502-4280	29602-4280	24802-1641
1.375 x 2.125	P0008	29502-4118	29602-4118	24802-1092	2.500 x 3.250	P0009	29502-4111	29602-4111	24802-0991
1.375 x 2.125	P0080	29502-4118	29602-4118	24802-1092	2.500 x 3.500	M0026	29502-4150	29602-4150	24802-1818
1.375 x 2.375	M0008	29502-4141	29602-4141	24802-1101	2.562 x 3.562	M0027	29502-4281	29602-4281	24802-1251
1.375 x 2.437	P0006	29502-4320	29602-4320	24802-2694	2.625 x 3.484	P0033	29502-4332	29602-4332	24802-2844
1.375 x 2.835	P0383	29502-4104	29602-4104	24802-1138	2.625 x 3.625	M0028	29502-4151	29602-4151	24802-1841
1.375 x 2.835	P2268	29502-4104	29602-4104	24802-1138	2.625 x 3.677	P0025	29502-4125	29602-4125	24802-1086
1.375 x 3.125	P0027	29502-4329	29602-4329	24802-1105	2.625 x 3.677	P1741	29502-4125	29602-4125	24802-1086
1.438 x 2.250	P0041	29502-4117	29602-4117	24802-2850	2.625 x 3.688	P0026	29502-4126	29602-4126	24802-1087
1.438 x 2.438	M0009	29502-4177	29602-4177	24802-2720	2.638 x 3.661	1770-A-08174-0	29502-6655	29602-6655	Contact Timken
1.500 x 2.000	P0100	29507-4130	29607-4130	24807-2578	2.677 x 3.425	1798-A-15076-0	29502-6654	29602-6654	Contact Timken
1.500 x 2.000	P1740	29507-4130	29607-4130	24807-2578	2.688 x 3.688	M0029	29502-4282	29602-4282	24802-2736
1.500 x 2.500	M0010	29502-4143	29602-4143	24802-1194	2.750 x 3.500	P0015	29502-4187	29602-4187	24802-1238
1.563 x 2.563	M0011	29502-4274	29602-4274	24802-2722	2.750 x 3.750	M0030	29502-4152	29602-4152	24802-1250
1.625 x 2.500	P0019	29502-4327	29602-4327	24802-2987	2.812 x 3.812	M0031	29502-4283	29602-4283	24802-2738
1.625 x 2.625	M0012	29502-4144	29602-4144	24802-1089	2.875 x 3.875	M0032	29502-4153	29602-4153	24802-1268
1.625 x 2.625	P0048	29502-4144	29602-4144	24802-1089	2.875 x 4.000	P0032	29502-4331	29602-4331	24802-2843
1.688 x 2.688	M0013	29502-4275	29602-4275	24802-2723	2.938 x 3.938	M0033	29502-4284	29602-4284	24802-2083
1.750 x 2.375	P0060	29507-4183	29607-4183	24807-2200	3.000 x 3.875	P0020	29502-4328	29602-4328	24802-2172
1.750 x 2.500	P0005	29502-4319	29602-4319	24802-1026	3.000 x 4.000	M0034	29502-2175	29602-2175	24802-1220
1.750 x 2.500	P2047	29502-4319	29602-4319	24807-2693	3.063 x 4.063	M0035	29502-4285	29602-4285	24802-2201
1.750 x 2.625	P0014	29502-4323	29602-4323	24802-1062	3.125 x 4.125	M0036	29502-4114	29602-4114	24802-2223
1.750 x 2.750	M0014	29502-4145	29602-4145	24802-1744	3.125 x 4.125	P0036	29502-4114	29602-4114	24802-2223

Continued on page 8

Notes:

- 24802 - 0.625" wide
24807 - 0.690" wide
29502 - 0.750" wide
29507 - 0.625" wide
29602 - 0.700" wide
29607 - 0.625" wide
- Interchange match on shaft and bore only.

Inpro to Timken

by Shaft Size

Shaft Size (inches)	Inpro Part Number	Product Code			Shaft Size (inches)	Inpro Part Number	Product Code		
		Non-Metallic Isolator (Glass-Filled PTFE)	Metallic Isolator	Non-Metallic Isolator (Graphite-Filled PTFE)			Non-Metallic Isolator (Glass-Filled PTFE)	Metallic Isolator	Non-Metallic Isolator (Graphite-Filled PTFE)
3.188 x 4.188	M0037	29502-4286	29602-4286	24802-2741	4.625 x 5.625	M0060	29502-4166	29602-4166	24802-2808
3.250 x 4.000	P0056	29502-4186	29602-4186	24802-1028	4.688 x 5.688	M0061	29502-4298	29602-4298	24802-2750
3.250 x 4.250	M0038	29502-4154	29602-4154	24802-2280	4.750 x 5.750	M0062	29502-4167	29602-4167	24802-2839
3.312 x 4.125	P0035	29502-4113	29602-4113	24802-2296	4.812 x 5.812	M0063	29502-4299	29602-4299	24802-2751
3.313 x 4.313	M0039	29502-4287	29602-4287	24802-2742	4.875 x 5.875	M0064	29502-4168	29602-4168	24802-2048
3.346 x 4.370	1700-A-08420-0	29502-6657	29602-6657	Contact Timken	4.938 x 5.938	M0065	29502-4300	29602-4300	24802-2539
3.375 x 4.375	M0040	29502-0774	29602-0774	24802-2322	5.000 x 6.000	M0066	29502-4169	29602-4169	24802-2917
3.400 x 4.400	P0017	29502-4325	29602-4325	24802-2832	5.000 x 6.000	P1849	29502-4169	29602-4169	24802-2917
3.438 x 4.438	M0041	29502-4288	29602-4288	24802-2577	5.063 x 6.063	M0067	29502-4301	29602-4301	24802-2756
3.500 x 4.375	P0074	29502-4214	29602-4214	24802-2378	5.125 x 6.125	M0068	29502-4170	29602-4170	24802-2764
3.500 x 4.375	P1850	29502-4214	29602-4214	24802-2378	5.188 x 6.188	M0069	29502-4302	29602-4302	24802-2766
3.500 x 4.500	M0042	29502-4156	29602-4156	24802-2368	5.250 x 6.250	M0070	29502-4171	29602-4171	24802-2270
3.563 x 4.563	M0043	29502-4289	29602-4289	24802-2743	5.250 x 6.500	P1874	29502-4208	29602-4208	24802-3067
3.583 x 4.606	1700-A-06023-0	29502-6652	29602-6652	Contact Timken	5.313 x 6.313	M0071	29502-4303	29602-4303	24802-2768
3.625 x 4.625	M0044	29502-4157	29602-4157	24802-2419	5.375 x 6.375	M0072	29502-1864	29602-1864	24802-2769
3.688 x 4.688	M0045	29502-4290	29602-4290	24802-2744	5.438 x 6.438	M0073	29502-4304	29602-4304	24802-2770
3.750 x 4.750	M0046	29502-4158	29602-4158	24802-2464	5.500 x 6.500	M0074	29502-4172	29602-4172	24802-3178
3.812 x 4.812	M0047	29502-4291	29602-4291	24802-2745	5.563 x 6.563	M0075	29502-4305	29602-4305	24802-2771
3.875 x 4.875	M0048	29502-4159	29602-4159	24802-2503	5.625 x 6.625	M0076	29502-4173	29602-4173	24802-1177
3.938 x 4.938	M0049	29502-4292	29602-4292	24802-1144	5.688 x 6.688	M0077	29502-4306	29602-4306	24802-2774
4.000 x 5.000	M0050	29502-4160	29602-4160	24802-2593	5.750 x 6.750	M0078	29502-4174	29602-4174	24802-3277
4.000 x 5.375	P1875	29502-4209	29602-4209	24802-2633	5.812 x 6.812	M0079	29502-4307	29602-4307	24802-2776
4.063 x 5.063	M0051	29502-4293	29602-4293	24802-2746	5.875 x 6.875	M0080	29502-4175	29602-4175	24802-2777
4.125 x 5.125	M0052	29502-4161	29602-4161	24802-2604	5.875 x 7.125	P1189	29502-4211	29602-4211	24802-3324
4.125 x 5.250	P0038	29502-4116	29602-4116	24802-2605	5.938 x 6.938	M0081	29502-4308	29602-4308	24802-2781
4.188 x 5.188	M0053	29502-4295	29602-4295	24802-2747	6.000 x 7.000	M0082	29502-3362	29602-3362	24802-3357
4.250 x 5.250	M0054	29502-4163	29602-4163	24802-2659	6.063 x 7.063	M0083	29502-4309	29602-4309	24802-2782
4.313 x 5.313	M0055	29502-4296	29602-4296	24802-2042	6.125 x 7.125	M0084	29502-4310	29602-4310	24802-3377
4.313 x 5.500	P0037	29502-4115	29602-4115	24802-2700	6.188 x 7.188	M0085	29502-4311	29602-4311	24802-2783
4.375 x 5.375	M0056	29502-4164	29602-4164	24802-2050	6.250 x 7.250	M0086	29502-4312	29602-4312	24802-2786
4.438 x 5.438	M0057	29502-4297	29602-4297	24802-2748	6.250 x 7.750	P1339	29502-3405	29602-3405	24802-2253
4.500 x 5.250	P0073	29502-4213	29602-4213	24802-2755	6.313 x 7.313	M0087	29502-4313	29602-4313	24802-2789
4.500 x 5.500	M0058	29502-4165	29602-4165	24802-2755	6.375 x 7.375	M0088	29502-4314	29602-4314	24802-2792
4.500 x 6.000	P0859	29502-4212	29602-4212	24802-2767	6.438 x 7.438	M0089	29502-4315	29602-4315	24802-2795
4.563 x 5.563	M0059	29502-2051	29602-2051	24802-2051	6.500 x 7.500	M0090	29502-4316	29602-4316	24802-3426

Notes:

- 24802 - 0.625" wide
24807 - 0.690" wide
29502 - 0.750" wide
29507 - 0.625" wide
29602 - 0.700" wide
29607 - 0.625" wide
- Interchange match on shaft and bore only.

TIMKEN BEARING ISOLATORS

Flowserve to Timken

by Flowserve Part Number

Flowserve Part Number	Dimensions (inches)	Product Code		
		Non-Metallic Isolator (Glass-Filled PTFE)	Metallic Isolator	Non-Metallic Isolator (Graphite-Filled PTFE)
JVBA0875Z33	0.875 x 1.250	29507-4106	29607-4106	24807-3196
JVBA1125YA3	1.125 x 2.000	29502-4108	29602-4108	24802-0988
JVBA1750YC3	1.750 x 2.875	29502-4107	29602-4107	24802-0998
JVBA1875YA3	1.875 x 2.750	29502-4110	29602-4110	24802-1075
JVBA2125Y33	2.125 x 2.875	29502-4109	29602-4109	24802-1322
JVBA2375YA3	2.375 x 3.250	29507-1581	29607-1581	24802-1581

Flowserve Part Number	Dimensions (inches)	Product Code		
		Non-Metallic Isolator (Glass-Filled PTFE)	Metallic Isolator	Non-Metallic Isolator (Graphite-Filled PTFE)
JVBA2500Y33	2.500 x 3.250	29502-4111	29602-4111	24802-0991
JVBA3125YC3	3.125 x 4.125	29502-4114	29602-4114	24802-2223
JVBA3312YC3	3.312 x 4.125	29502-4113	29602-4113	24802-2296
JVBA4125C33	4.125 x 5.250	29502-4116	29602-4116	24802-2605
JVBA4312BB3	4.312 x 5.500	29502-4115	29602-4115	24802-2700

Flowserve to Timken

by Shaft Size

Shaft Size (inches)	Flowserve Part Number	Product Code		
		Non-Metallic Isolator (Glass-Filled PTFE)	Metallic Isolator	Non-Metallic Isolator (Graphite-Filled PTFE)
0.875 x 1.250	JVBA0875Z33	29507-4106	29607-4106	24807-3196
1.125 x 2.000	JVBA1125YA3	29502-4108	29602-4108	24802-0988
1.750 x 2.875	JVBA1750YC3	29502-4107	29602-4107	24802-0998
1.875 x 2.750	JVBA1875YA3	29502-4110	29602-4110	24802-1075
2.125 x 2.875	JVBA2125Y33	29502-4109	29602-4109	24802-1322
2.375 x 3.250	JVBA2375YA3	29507-1581	29607-1581	24802-1581

Shaft Size (inches)	Flowserve Part Number	Product Code		
		Non-Metallic Isolator (Glass-Filled PTFE)	Metallic Isolator	Non-Metallic Isolator (Graphite-Filled PTFE)
2.500 x 3.250	JVBA2500Y33	29502-4111	29602-4111	24802-0991
3.125 x 4.125	JVBA3125YC3	29502-4114	29602-4114	24802-2223
3.312 x 4.125	JVBA3312YC3	29502-4113	29602-4113	24802-2296
4.125 x 5.250	JVBA4125C33	29502-4116	29602-4116	24802-2605
4.312 x 5.500	JVBA4312BB3	29502-4115	29602-4115	24802-2700

Notes:

- 24802 - 0.625" wide
24807 - 0.690" wide
29502 - 0.750" wide
29507 - 0.625" wide
29602 - 0.700" wide
29607 - 0.625" wide
- Interchange match on shaft and bore only.

Electric Motor Frames to Timken
by Frame Part Number

Frame Part Number	Dimensions (inches)	Product Code		
		Non-Metallic Isolator (Glass-Filled PTFE)	Metallic Isolator	Non-Metallic Isolator (Graphite-Filled PTFE)
130	1.312 x 2.000	29507-1146	29607-1146	24807-2524
143T	0.983 x 1.983	29507-5171	29607-5171	24802-5171
182	0.875 x 1.875	29502-4267	29602-4267	24802-2711
182T	1.125 x 2.125	29502-4139	29602-4139	24802-0832
184	0.875 x 1.875	29502-4267	29602-4267	24802-2711
184T	1.125 x 2.125	29502-4139	29602-4139	24802-0832
210	1.375 x 2.375	29502-4141	29602-4141	24802-1101
213	1.125 x 2.125	29502-4139	29602-4139	24802-0832
213T	1.375 x 2.375	29502-4141	29602-4141	24802-1101
215	1.125 x 2.125	29502-4139	29602-4139	24802-0832
215T	1.375 x 2.375	29502-4141	29602-4141	24802-1101
250	1.766 x 2.750	29502-4350	29602-4350	24802-2292
254U	1.375 x 2.375	29502-4141	29602-4141	24802-1101
254T	1.625 x 2.625	29502-4144	29602-4144	24802-1089
256U	1.375 x 2.375	29502-4141	29602-4141	24802-1101
256T	1.625 x 2.625	29502-4144	29602-4144	24802-1089
280	1.900 x 3.500	29502-4356	29602-4356	24802-6562
284U	1.625 x 2.625	29502-4144	29602-4144	24802-1089
284T	1.875 x 2.875	29502-3585	29602-3585	24802-0792
284TS	1.625 x 2.625	29502-4144	29602-4144	24802-1089
286U	1.625 x 2.625	29502-4144	29602-4144	24802-1089
286T	1.875 x 2.875	29502-3585	29602-3585	24802-0792
286TS	1.625 x 2.625	29502-4144	29602-4144	24802-1089
320	2.355 x 3.870	29502-4351	29602-4351	24802-6563
324U	1.875 x 2.875	29502-3585	29602-3585	24802-0792
324S	1.625 x 2.625	29502-4144	29602-4144	24802-1089
324T	2.125 x 3.125	29502-4146	29602-4146	24802-1761
324TS	1.875 x 2.875	29502-3585	29602-3585	24802-0792
326U	1.875 x 2.875	29502-3585	29602-3585	24802-0792
326S	1.625 x 2.625	29502-4144	29602-4144	24802-1089
326T	2.125 x 3.125	29502-4146	29602-4146	24802-1761
326TS	1.875 x 2.875	29502-3585	29602-3585	24802-0792
360	2.500 x 4.375	29502-4353	29602-4353	24802-1834
364S	1.625 x 2.625	29502-4144	29602-4144	24802-1089

Frame Part Number	Dimensions (inches)	Product Code		
		Non-Metallic Isolator (Glass-Filled PTFE)	Metallic Isolator	Non-Metallic Isolator (Graphite-Filled PTFE)
364U	2.125 x 3.125	29502-4146	29602-4146	24802-1761
364US	1.875 x 2.875	29502-3585	29602-3585	24802-0792
364T	2.375 x 3.375	29502-4149	29602-4149	24802-1654
364TS	1.875 x 2.875	29502-3585	29602-3585	24802-0792
365S	1.625 x 2.625	29502-4144	29602-4144	24802-1089
365U	2.125 x 3.125	29502-4146	29602-4146	24802-1761
365US	1.875 x 2.875	29502-3585	29602-3585	24802-0792
365T	2.375 x 3.375	29502-4149	29602-4149	24802-1654
365TS	1.875 x 2.875	29502-3585	29602-3585	24802-0792
404S	1.875 x 2.875	29502-3585	29602-3585	24802-0792
404U	2.375 x 3.375	29502-4149	29602-4149	24802-1654
404US	2.125 x 3.125	29502-4146	29602-4146	24802-1761
404T	2.875 x 3.875	29502-4153	29602-4153	24802-1268
404TS	2.125 x 3.125	29502-4146	29602-4146	24802-1761
405S	1.875 x 2.875	29502-3585	29602-3585	24802-0792
405U	2.375 x 3.375	29502-4149	29602-4149	24802-1654
405US	2.125 x 3.125	29502-4146	29602-4146	24802-1761
405T	2.875 x 3.875	29502-4153	29602-4153	24802-1268
405TS	2.125 x 3.125	29502-4146	29602-4146	24802-1761
406	3.000 x 4.910	29502-4352	29602-4352	24802-2302
440	3.375 x 5.250	29502-4354	29602-4354	24802-2303
444S	2.125 x 3.125	29502-4146	29602-4146	24802-1761
444U	2.875 x 3.875	29502-4153	29602-4153	24802-1268
444US	2.125 x 3.125	29502-4146	29602-4146	24802-1761
444T	3.375 x 4.375	29502-0774	29602-0774	24802-2322
444TS	2.375 x 3.375	29502-4149	29602-4149	24802-1654
445S	2.125 x 3.125	29502-4146	29602-4146	24802-1761
445U	2.875 x 3.875	29502-4153	29602-4153	24802-1268
445US	2.125 x 3.125	29502-4146	29602-4146	24802-1761
445T	3.375 x 4.375	29502-0774	29602-0774	24802-2322
445TS	2.375 x 3.375	29502-4149	29602-4149	24802-1654
504U	2.875 x 3.875	29502-4153	29602-4153	24802-4153
504S	2.125 x 3.125	29502-4146	29602-4146	24802-1761
505S	2.125 x 3.125	29502-4146	29602-4146	24802-1761

Notes:

- 24802 - 0.625" wide
24807 - 0.690" wide
29502 - 0.750" wide
29507 - 0.625" wide
29602 - 0.700" wide
29607 - 0.625" wide
- Interchange match on shaft and bore only.

TIMKEN PUMP APPLICATIONS

Goulds Pumps to Timken

by Goulds Pump Number

Pump Number	I/O	Dimensions (inches)	Product Code			Pump Number	I/O	Dimensions (inches)	Product Code		
			Non-Metallic Isolator (Glass-Filled PTFE)	Metallic Isolator	Non-Metallic Isolator (Graphite-Filled PTFE)				Non-Metallic Isolator (Glass-Filled PTFE)	Metallic Isolator	Non-Metallic Isolator (Graphite-Filled PTFE)
Goulds 3138S	Inboard	2.125 x 3.000	29502-4205	29602-4205	24802-1323	Goulds 3196XLT	Inboard	2.500 x 3.250	29502-4111	29602-4111	24802-0991
	Outboard	1.875 x 2.686	29502-4330	29602-4330	24807-2834		Outboard	2.375 x 3.250	29502-4112	29602-4112	24802-1581
Goulds 3138MX	Inboard	2.875 x 4.000	29502-4331	29602-4331	24802-2843	Goulds 3198MTX	Inboard	1.750 x 2.875	29502-4107	29602-4107	24802-0998
	Outboard	2.625 x 3.484	29502-4332	29602-4332	24802-2844		Outboard	1.125 x 2.000	29502-4108	29602-4108	24802-0988
Goulds 3139S	Inboard	2.125 x 3.000	29502-4205	29602-4205	24802-1323	Goulds 3198STX	Inboard	1.375 x 2.835	29502-4104	29602-4104	24802-1138
	Outboard	1.875 x 2.686	29502-4330	29602-4330	24807-2834		Outboard	0.875 x 1.250	29507-4106	29607-4106	24807-3196
Goulds 3139MX	Inboard	2.875 x 4.000	29502-4331	29602-4331	24802-2843	Goulds 3296S	Inboard	Not Required			
	Outboard	2.625 x 3.484	29502-4332	29602-4332	24802-2844		Outboard	0.875 x 1.250	29507-4106	29607-4106	24807-3196
Goulds 3145S	Inboard	Contact Timken				Goulds 3316L	Inboard	1.937 x 3.000	29502-4120	29602-4120	24802-1123
	Outboard	2.375 X 3.250	29502-4112	29602-4112	24802-1581		Outboard	2.062 x 3.000	29502-4119	29602-4119	24802-1225
Goulds 3171L	Outboard	1.875 x 5.000	29502-4729	29602-4729	24802-6564	Goulds 3316M	Inboard	1.437 x 2.437	29502-4177	29602-4177	24802-1116
Goulds 3171M	Outboard	1.375 x 3.625	29502-4730	29602-4730	24802-6565		Outboard	1.375 x 2.125	29502-4118	29602-4118	24802-1092
Goulds 3171S	Outboard	0.875 x 2.750	29502-4731	29602-4731	24802-6566	Goulds 3316S	Inboard	1.062 x 1.643	29502-4206	29607-4206	24807-4389
Goulds 3175L	Inboard	4.313 x 5.500	29502-4115	29602-4115	24802-2700		Outboard	0.937 x 1.500	29502-4122	29607-4122	24807-2563
Goulds 3175M	Outboard	4.125 x 5.250	29502-4116	29602-4116	24802-2605	Goulds 3316ST	Inboard	1.062 x 1.625	29507-4121	29607-4121	24807-3907
	Inboard	3.312 x 4.125	29502-4113	29602-4113	24802-2296		Outboard	0.937 x 1.500	29507-4122	29607-4122	24807-2563
Goulds 3175S	Outboard	3.125 x 4.125	29502-4114	29602-4114	24802-2223	Goulds 3375S	Inboard	1.125 x 1.562	29507-4334	29607-4334	24807-2852
	Inboard	2.500 x 3.250	29502-4111	29602-4111	24802-0991		Outboard	Contact Timken			
Goulds 3175XL	Outboard	2.375 x 3.250	29502-4112	29602-4112	24802-1581	Goulds 3375ST	Inboard	1.125 x 1.562	29507-4334	29607-4334	24807-2852
	Inboard	5.000 x 6.250	29502-4203	29602-4203	24802-2923		Outboard	Not Required			
Goulds 3180L	Outboard	4.313 x 5.500	29502-4115	29602-4115	24802-2700	Goulds 3405L	Inboard	1.937 x 3.000	29502-4120	29602-4120	24802-1123
	Inboard	70mm x 95mm	29502-4192	29602-4192	24802-3107		Outboard	2.062 x 3.000	29502-4119	29602-4119	24802-1225
Goulds 3180M	Outboard	70mm x 95mm	29502-4192	29602-4192	24802-3107	Goulds 3405M	Inboard	1.437 x 2.437	29502-4177	29602-4177	24802-2720
	Inboard	Not Required					Outboard	1.375 x 2.125	29502-4118	29602-4118	24802-1092
Goulds 3180S	Outboard	48mm x 70mm	29502-4189	29602-4189	24802-1935	Goulds 3405S	Inboard	1.062 x 1.643	29502-4206	29607-4206	24807-3907
	Inboard	55mm x 80mm	29502-4190	29602-4190	24802-2005		Outboard	0.937 x 1.500	29502-4122	29607-4122	24807-2563
Goulds 3180XL	Outboard	48mm x 70mm	29502-4189	29602-4189	24802-1935	Goulds 3410L	Inboard	2.187 x 3.000	29502-4204	29602-4204	24802-1119
	Inboard	Not Required					Outboard	2.187 x 3.000	29502-4204	29602-4204	24802-1119
Goulds 3185L	Outboard	85mm x 110mm	29502-4193	29602-4193	24802-5650	Goulds 3410M	Inboard	2.125 x 3.000	29502-4205	29602-4205	24802-1323
	Inboard	70mm x 95mm	29502-4192	29602-4192	24802-3107		Outboard	1.375 x 2.835	29502-4104	29602-4104	24802-1138
Goulds 3185M	Outboard	85mm x 110mm	29502-4193	29602-4193	24802-5650	Goulds 3410S	Inboard	1.500 x 2.125	29507-1118	29607-1118	24807-3410
	Inboard	Not Required					Outboard	1.750 x 2.875	29502-4107	29602-4107	24802-0998
Goulds 3185S	Outboard	60mm x 85mm	29502-4191	29602-4191	24802-3309	Goulds 3410XL	Inboard	1.500 x 2.125	29507-1118	29607-1118	24807-3410
	Inboard	55mm x 80mm	29502-4190	29602-4190	24802-2005		Outboard	2.187 x 3.000	29502-4204	29602-4204	24802-1119
Goulds 3185XL	Outboard	48mm x 70mm	29502-4189	29602-4189	24802-1935	Goulds 3420SX	Inboard	2.125 x 3.000	29502-4205	29602-4205	24802-1323
	Inboard	Not Required					Outboard	2.559 x 3.544	29502-4721	29602-4721	24802-1883
Goulds 3196ST	Outboard	85mm x 110mm	29502-4193	29602-4193	24802-5650	Goulds 3700L	Inboard	2.375 x 3.544	29502-4727	29602-4727	24802-6567
	Inboard	1.375 x 2.835	29502-4104	29602-4104	24802-1138		Outboard	3.149 x 4.135	29502-4728	29602-4728	24802-2272
Goulds 3196STX	Outboard	0.875 x 1.250	29507-4106	29607-4106	24807-3196	Goulds 3700M	Inboard	2.625 x 3.625	29502-4151	29602-4151	24802-1841
	Inboard	1.375 x 2.835	29502-4104	29602-4104	24802-1138		Outboard	2.437 x 3.437	29502-4280	29602-4280	24802-1641
Goulds 3196M	Outboard	0.875 x 1.250	29507-4106	29607-4106	24807-3196	Goulds 3700MT	Inboard	2.186 x 3.186	29502-4279	29602-4279	24802-2489
	Inboard	1.750 x 2.875	29502-4107	29602-4107	24802-0998		Outboard	2.280 x 3.280	29502-4338	29602-4338	24802-2312
Goulds 3196MT	Outboard	1.125 x 2.000	29502-4108	29602-4108	24802-0988	Goulds 3700S	Inboard	2.186 x 3.186	29502-4279	29602-4279	24802-2489
	Inboard	1.750 x 2.875	29502-4107	29602-4107	24802-0998		Outboard	2.280 x 3.280	29502-4338	29602-4338	24802-2312
Goulds 3196MTX	Outboard	1.125 x 2.000	29502-4108	29602-4108	24802-0988	Goulds 3700XL	Inboard	2.280 x 3.280	29502-4338	29602-4338	24802-2312
	Inboard	1.750 x 2.875	29502-4107	29602-4107	24802-0998		Outboard	3.250 x 4.250	29502-4154	29602-4154	24802-2280
Goulds 3196LTC	Outboard	1.125 x 2.000	29502-4108	29602-4108	24802-0988	Goulds 3735M	Inboard	3.187 x 4.187	29502-4286	29602-4286	24802-2741
	Inboard	2.125 x 2.875	29502-4109	29602-4109	24802-1322		Outboard	1.875 x 2.625	29502-4124	29602-4124	24802-0989
Goulds 3196LTX	Outboard	1.875 x 2.750	29502-4110	29602-4110	24802-1075	Goulds 3735L	Inboard	1.875 x 2.625	29502-4124	29602-4124	24802-0989
	Inboard	2.125 x 2.875	29502-4109	29602-4109	24802-1322		Outboard	Contact TIMKEN			
Goulds 3196LTX	Outboard	1.875 x 2.750	29502-4110	29602-4110	24802-1075	Goulds 3735L	Inboard	2.250 x 3.250	29502-4148	29602-4148	24802-1493
	Inboard	2.125 x 2.875	29502-4109	29602-4109	24802-1322		Outboard	1.625 x 2.250	29507-4347	29607-4347	24807-2164

Continued on page 12

Notes:

1. 24802 - 0.625" wide
24807 - 0.690" wide
29502 - 0.750" wide
29507 - 0.625" wide
29602 - 0.700" wide
29607 - 0.625" wide
2. Interchange match on shaft and bore only.

Golds Pumps to Timken
by *Golds Pump Number*

Pump Number	I/O	Dimensions (inches)	Product Code		
			Non-Metallic Isolator (Glass-Filled PTFE)	Metallic Isolator	Non-Metallic Isolator (Graphite-Filled PTFE)
Goulds 3736M	Inboard	1.875 x 2.625 Contact Timken	29502-4124	29602-4124	24802-0989
	Outboard				
Goulds 3755MT	Inboard	1.625 x 2.625	29502-4144	29602-4144	24802-1089
	Outboard				
Goulds 3755S	Inboard	1.125 x 1.562 Contact Timken	29507-4334	29607-4334	24807-2852
	Outboard				
Goulds 3796LTX	Inboard	2.125 x 2.875	29502-4109	29602-4109	24802-1322
	Outboard				
Goulds 3796MT	Inboard	1.750 x 3.937	29502-4348	29602-4348	24802-3970
	Outboard				
Goulds 3796MTX	Inboard	1.125 x 2.000	29502-4108	29602-4108	24802-0988
	Outboard				
Goulds 3796STX	Inboard	1.750 x 3.937	29502-4348	29602-4348	24802-3970
	Outboard				
Goulds 3996LTX	Inboard	1.375 x 2.835	29502-4104	29602-4104	24802-1135
	Outboard				
Goulds 3996MT	Inboard	0.875 x 1.250	29502-4106	29607-4106	24807-3196
	Outboard				
Goulds 3996M	Inboard	2.125 x 2.875	29502-4109	29602-4109	24802-1322
	Outboard				
Goulds 3996MTX	Inboard	1.875 x 2.750	29502-4110	29602-4110	24802-1075
	Outboard				
Goulds 3996S	Inboard	1.750 x 2.875	29502-4107	29602-4107	24802-0998
	Outboard				
Goulds 3996MT	Inboard	1.375 x 2.125	29502-4118	29602-4118	24802-1092
	Outboard				
Goulds 3996MTX	Inboard	1.250 x 2.000	29502-4185	29602-4185	24802-1215
	Outboard				
Goulds 3996S	Inboard	1.750 x 3.937	29502-4348	29602-4348	24802-3970
	Outboard				
Goulds 3996S	Inboard	1.125 x 2.000	29502-4108	29602-4108	24802-0988
	Outboard				
Goulds 3996S	Inboard	1.375 x 2.125	29502-4118	29602-4118	24802-1092
	Outboard				
Goulds 3996S	Inboard	1.375 x 1.875	29507-4176	29607-4176	24807-2512
	Outboard				
Goulds 3996S	Inboard	0.875 x 1.250	29507-4106	29607-4106	24807-3196
	Outboard				

Pump Number	I/O	Dimensions (inches)	Product Code		
			Non-Metallic Isolator (Glass-Filled PTFE)	Metallic Isolator	Non-Metallic Isolator (Graphite-Filled PTFE)
Goulds 3996ST	Inboard	1.375 x 2.835	29502-4104	29602-4104	24802-1138
	Outboard				
Goulds 3996STX	Inboard	0.875 x 1.250	29507-4106	29607-4106	24807-3196
	Outboard				
Goulds LF96MTX	Inboard	1.375 x 2.835	29502-4104	29602-4104	24802-1138
	Outboard				
Goulds JC/HS/5150-C1	Inboard	0.875 x 1.250	29507-4106	29607-4106	24807-3196
	Outboard				
Goulds JC/HS/5150-C2	Inboard	1.750 x 3.937	29502-4348	29602-4348	24802-3970
	Outboard				
Goulds JC/HS/5150-C3	Inboard	1.125 x 2.000	29502-4108	29602-4108	24802-0988
	Outboard				
Goulds JC/HS/5150-C4	Inboard	2.312 x 4.500	29502-4732	29602-4732	24802-6568
	Outboard				
Goulds JC/HS/5150-C5	Inboard	3.500 x 6.500	29502-4733	29602-4733	24802-6569
	Outboard				
Goulds JC/HS/5150-C6	Inboard	4.688 x 8.750	29502-4734	29602-4734	Contact Timken
	Outboard				
Goulds JC/HS/5150-C5A	Inboard	5.500 x 10.250	29502-4735	29602-4735	Contact Timken
	Outboard				
Goulds JC/HS/5150-C6	Inboard	6.625 x 10.500	29502-4736	29602-4736	Contact Timken
	Outboard				
Goulds JC/HS/5150-C6A	Inboard	6.625 x 8.750	29502-4737	29602-4737	Contact Timken
	Outboard				
Goulds JC/HS/5150-C6A	Inboard	7.750 x 11.250	29502-4738	29602-4738	Contact Timken
	Outboard				
Goulds JC/HS/5150-C6A	Inboard	7.750 x 10.250	29502-4739	29602-4739	Contact Timken
	Outboard				

Notes:

1. 24802 - 0.625" wide
24807 - 0.690" wide
29502 - 0.750" wide
29507 - 0.625" wide
29602 - 0.700" wide
29607 - 0.625" wide
2. Interchange match on shaft and bore only.

TIMKEN PUMP APPLICATIONS

Durco Pumps to Timken

by Durco Pump Number

Pump Number	I/O	Dimensions (inches)	Product Code		
			Non-Metallic Isolator (Glass-Filled PTFE)	Metallic Isolator	Non-Metallic Isolator (Graphite-Filled PTFE)
Durco MkII Grp I	Inboard w/o	1.125 x 2.441	29599-0095	29699-0014	Contact TIMKEN
	Inboard w/b	1.125 x 2.000	29502-4108	29602-4108	24802-0988
	Outboard	0.875 x 1.625	29507-4123	29607-4123	24802-1012
Durco MkII Grp II	Inboard	1.875 x 2.625	29502-4124	29602-4124	24802-0989
	Outboard	1.125 x 2.000	29502-4108	29602-4108	24802-0988
Durco MkII Grp III	Inboard	2.625 x 3.677	29502-4125	29602-4125	24802-1086
	Outboard	2.625 x 3.677	29502-4125	29602-4125	24802-1086
Durco MkIII Grp I	Inboard	1.375 x 2.835	29502-4104	29602-4104	24802-1138
	Outboard	0.875 x 1.625	29507-4123	29607-4123	24802-1012

Pump Number	I/O	Dimensions (inches)	Product Code		
			Non-Metallic Isolator (Glass-Filled PTFE)	Metallic Isolator	Non-Metallic Isolator (Graphite-Filled PTFE)
Durco MkIII Grp II	Inboard	1.875 x 2.625	29502-4124	29602-4124	24802-0989
	Outboard	1.125 x 2.000	29502-4108	29602-4108	24802-0988
Durco MkIII Grp II (oversized shaft)	Inboard	1.875 x 2.625	29502-4124	29602-4124	24802-0989
	Outboard	1.500 x 2.000	29507-4130	29607-4130	24807-2578
Durco MkIII Grp III	Inboard	2.625 x 3.677	29502-4125	29602-4125	24802-1086
	Outboard	2.625 x 3.677	29502-4125	29602-4125	24802-1086

ITT-AC Pumps to Timken

by ITT-AC Pump Number

Pump Number	I/O	Dimensions (inches)	Product Code		
			Non-Metallic Isolator (Glass-Filled PTFE)	Metallic Isolator	Non-Metallic Isolator (Graphite-Filled PTFE)
ITT-AC CSO,F4-A1	Inboard	1.000 x 1.750	29502-4182	29602-4182	24807-2695
	Outboard	1.000 x 1.750	29502-4182	29602-4182	24807-2695
ITT-AC CSO,F4-B2	Inboard	1.750 x 2.375	29507-4183	29607-4183	24807-2200
	Outboard	1.125 x 1.750	29507-4184	29607-4184	24807-2994
	Outboard	1.250 x 2.000	29502-4185	29602-4185	24802-1215
ITT-AC CSO,F4-B3	Inboard	1.750 x 2.375	29507-4183	29607-4183	24807-2200
	Outboard	1.125 x 1.750	29507-4184	29607-4184	24807-2994
ITT-AC CSO,F4-C1	Inboard	1.375 x 2.125	29502-4118	29602-4118	24802-2858
	Outboard	1.000 x 1.750	29502-4182	29602-4182	24807-2695
ITT-AC CSO,F4-D1	Inboard	2.125 x 2.875	29502-4109	29602-4109	24802-1322
	Outboard	1.250 x 1.750	29507-4340	29607-4340	24807-1782
ITT-AC CSO,F8-E1	Inboard	3.250 x 4.000	29502-4186	29602-4186	24802-1028
	Outboard	2.750 x 3.500	29502-4187	29602-4187	24802-1238
ITT-AC PWO,F8-B1	Inboard	3.250 x 4.000	29502-4186	29602-4186	24802-1028
	Outboard	2.750 x 3.500	29502-4187	29602-4187	24802-1238
ITT-AC PWO,F8-B2	Inboard	3.250 x 4.000	29502-4186	29602-4186	24802-1028
	Outboard	2.750 x 3.500	29502-4187	29602-4187	24802-1238
ITT-AC PWO,F8-B4	Inboard	3.250 x 4.000	29502-4186	29602-4186	24802-1028
	Outboard	2.750 x 3.500	29502-4187	29602-4187	24802-1238
ITT-AC PWO,F8-C1	Inboard	4.500 x 5.500	29502-4165	29602-4165	24802-2755
	Outboard	3.750 x 4.750	29502-4158	29602-4158	24802-2464
ITT-AC PWO,F8-M1	Inboard	3.250 x 4.000	29502-4186	29602-4186	24802-1028
	Outboard	2.750 x 3.500	29502-4187	29602-4187	24802-1238

Pump Number	I/O	Dimensions (inches)	Product Code		
			Non-Metallic Isolator (Glass-Filled PTFE)	Metallic Isolator	Non-Metallic Isolator (Graphite-Filled PTFE)
ITT-AC PWO,F9-B1	Inboard	3.250 x 4.000	29502-4186	29602-4186	24802-1028
	Outboard	2.750 x 3.500	29502-4187	29602-4187	24802-1238
ITT-AC PWO,F9-M1	Inboard	3.250 x 4.000	29502-4186	29602-4186	24802-1028
	Outboard	2.750 x 3.500	29502-4187	29602-4187	24802-1238
ITT-AC PW-CW,FR1	Inboard	2.750 x 3.250	29502-4148	29602-4148	24807-4792
	Outboard	1.875 x 2.625	29502-4124	29602-4124	24802-0989
ITT-AC PW-CW,FR2	Inboard	3.187 x 4.187	29502-4286	29602-4286	24802-2741
	Outboard	2.750 x 3.500	29502-4187	29602-4187	24802-1238
ITT-AC PW-CW,FR3	Inboard	4.500 x 5.500	29502-4165	29602-4165	24802-2755
	Outboard	4.187 x 5.250	29502-4366	29602-4366	24802-2646
ITT-AC PWO,F8-L1	Inboard	2.250 x 3.190	29502-4367	29602-4367	24802-1901
	Outboard	1.750 x 2.625	29502-4323	29602-4323	24802-1062
ITT-AC PWO,F8-N1	Inboard	4.500 x 5.500	29502-4165	29602-4165	24802-2755
	Outboard	3.750 x 4.750	29502-4158	29602-4158	24802-2464
ITT-AC PWO,F9-L1	Inboard	2.250 x 3.190	29502-4367	29602-4367	24802-1901
	Outboard	1.750 x 2.625	29502-4323	29602-4323	24802-1062
ITT-AC PWO,F9-N1	Inboard	4.500 x 5.500	29502-4165	29602-4165	24802-2755
	Outboard	3.750 x 4.750	29502-4158	29602-4158	24802-2464
ITT-AC 8 X 6 SKD	Inboard	2.246 x 4.500	29502-4368	29602-4368	24802-6571
	Outboard	2.246 x 4.500	29502-4368	29602-4368	24802-6571
ITT-AC Y	Inboard	4.625 x 5.625	29502-4166	29602-4166	24802-2808
	Outboard	3.750 x 4.750	29502-4158	29602-4158	24802-2464

Notes:

- 24802 - 0.625" wide
24807 - 0.690" wide
29502 - 0.750" wide
29507 - 0.625" wide
29602 - 0.700" wide
29607 - 0.625" wide
- Interchange match on shaft and bore only.

Mission Pumps to Timken

by Mission Pump Number

Pump Number	I/O	Dimensions (inches)	Product Code		
			Non-Metallic Isolator (Glass-Filled PTFE)	Metallic Isolator	Non-Metallic Isolator (Graphite-Filled PTFE)
Magnum (5313 & 7311 bearings)	Inboard	2.500 x 3.500	29502-4150	29602-4150	N/A
	Outboard	1.875 x 2.750	29505-4110	29602-4110	N/A
Magnum (Fafnir 114A bearings)	Inboard	1.875 x 3.000	29502-4809	29602-4809	N/A
	Outboard	1.875 x 3.000	29505-4809	29602-4809	N/A

Pump Number	I/O	Dimensions (inches)	Product Code		
			Non-Metallic Isolator (Glass-Filled PTFE)	Metallic Isolator	Non-Metallic Isolator (Graphite-Filled PTFE)
Magnum (Fafnir 102A bearings)	Inboard	1.125 x 2.062	29502-5470	29602-5470	N/A
	Outboard	1.125 x 2.062	29505-5470	29602-5470	N/A

Peerless Pumps to Timken

by Peerless Pump Number

Pump Number	I/O	Dimensions (inches)	Product Code		
			Non-Metallic Isolator (Glass-Filled PTFE)	Metallic Isolator	Non-Metallic Isolator (Graphite-Filled PTFE)
Peerless 8175L	Inboard	4.312 x 5.500	29502-4115	29602-4115	24802-2700
	Outboard	3.375 / 4.125 x 5.250	Contact Timken	Contact Timken	Contact Timken
Peerless 8175M	Inboard	3.312 x 4.125	29502-4113	29602-4113	24807-2846
	Outboard	2.375 / 3.125 x 4.125	Contact Timken	Contact Timken	Contact Timken
Peerless 8175S	Inboard	2.500 x 3.250	29502-4111	29602-4111	24807-6576
	Outboard	2.375 x 3.250	29502-4112	29602-4112	24802-1581
Peerless 8196LTC	Inboard	2.125 x 2.875	29502-4109	29602-4109	24807-3969
	Outboard	1.875 x 2.750	29502-4110	29602-4110	24802-1075
Peerless 8196LTP	Inboard	2.125 x 2.875	29502-4109	29602-4109	24807-3969
	Outboard	1.875 x 2.750	29502-4110	29602-4110	24802-1075

Pump Number	I/O	Dimensions (inches)	Product Code		
			Non-Metallic Isolator (Glass-Filled PTFE)	Metallic Isolator	Non-Metallic Isolator (Graphite-Filled PTFE)
Peerless 8196MT	Inboard	1.750 x 2.875	29502-4107	29602-4107	24802-0998
	Outboard	1.125 x 2.000	29502-4108	29602-4108	24802-0988
Peerless 8196MTP	Inboard	1.750 x 2.875	29502-4107	29602-4107	24802-0998
	Outboard	1.125 x 2.000	29502-4108	29602-4108	24802-0988
Peerless 8196ST	Inboard	1.375 x 2.835	29502-4104	29602-4104	24802-1138
	Outboard	0.875 x 1.250	29507-4106	29607-4106	24807-3196
Peerless 8196STP	Inboard	1.375 x 2.835	29502-4104	29602-4104	24802-1138
	Outboard	0.875 x 1.250	29507-4106	29607-4106	24807-3196
Peerless 8196XLT	Inboard	2.500 x 3.250	29502-4111	29602-4111	24807-6576
	Outboard	2.375 x 3.250	29502-4112	29602-4112	24802-1581
Peerless 8196XLTP	Inboard	2.500 x 3.250	29502-4111	29602-4111	24807-6576
	Outboard	2.375 x 3.250	29502-4112	29602-4112	24802-1581

Warren Pumps to Timken

by Warren Pump Number

Pump Number	I/O	Dimensions (inches)	Product Code		
			Non-Metallic Isolator (Glass-Filled PTFE)	Metallic Isolator	Non-Metallic Isolator (Graphite-Filled PTFE)
Warren #11 MARK I	Inboard	4.500 x 5.750	29502-4391	29602-4391	24802-2761
	Outboard	3.500 x 4.375	29502-4214	29602-4214	24802-2378
Warren #11 MARK II	Inboard	5.000 x 6.000	29502-4169	29602-4169	24802-2917
	Outboard	3.500 x 4.375	29502-4214	29602-4214	24802-2378
Warren #125 MARK I	Inboard	5.250 x 6.500	29502-4208	29602-4208	24802-3067
	Outboard	4.000 x 5.375	29502-4209	29602-4209	24802-2633
Warren #125 MARK II	Inboard	5.875 x 7.125	29502-4211	29602-4211	24802-3324
	Outboard	4.000 x 5.375	29502-4209	29602-4209	24802-2633

Pump Number	I/O	Dimensions (inches)	Product Code		
			Non-Metallic Isolator (Glass-Filled PTFE)	Metallic Isolator	Non-Metallic Isolator (Graphite-Filled PTFE)
Warren #135 MARK I	Inboard	6.250 x 7.750	29502-3405	29602-3405	24802-2253
	Outboard	4.750 x 6.000	29502-4218	29602-4218	24802-2875
Warren #138 MARK II	Inboard	6.250 x 7.750	29502-3405	29602-3405	24802-2253
	Outboard	4.500 x 6.000	29502-4212	29602-4212	24802-2767
Warren #8 MARK I	Inboard	2.875 x 4.125	29502-4215	29602-4215	24802-6572
	Outboard	2.000 x 3.125	29502-4217	29602-4217	24802-2001

Notes:

- 24802 - 0.625" wide
24807 - 0.690" wide
29502 - 0.750" wide
29507 - 0.625" wide
29602 - 0.700" wide
29607 - 0.625" wide
- Interchange match on shaft and bore only.

TIMKEN SPLIT PILLOW APPLICATIONS

Non-Metallic Isolator (Glass-Filled PTFE) Interchange

by Split Pillow Block Number

Type	Basic Size	LER Ring	Shaft Dia.	Housing Dia.	Seal Width	Product Code	Type	Basic Size	LER Ring	Shaft Dia.	Housing Dia.	Seal Width	Product Code
COOPER	207		2.438	2.807	0.845	29516-7192	SAF	220	117	4.438	5.543	1.175	29516-7099
COOPER	215		2.938	4.485	0.917	29516-7193	SAF	220	118	4.500	5.543	1.175	29516-7135
DODGE	517	53	2.938	3.813	0.879	29516-7215	SAF	220	119	4.563	5.543	1.175	29516-7090
DODGE			4.125	5.090	1.067	29516-7153	SAF	221	93	3.938	5.085	1.050	29516-7133
DODGE			4.500	5.548	1.067	29516-7154	SAF	221	96	4.125	5.085	1.158	29516-5125
DODGE			3.812	4.965	1.067	29516-7155	SAF	222	112	4.125	5.230	1.033	29516-7137
MEITHER	ER414S		8.375	9.945	1.242	29516-7220	SAF	222	113	4.188	5.230	1.175	29516-7088
SAF	206	17	1.438	2.063	0.943	29516-5432	SAF	222	121	4.875	5.980	1.175	29516-7089
SAF	206	18	1.500	2.063	0.943	29516-7128	SAF	222	122	4.938	5.980	1.175	29516-7100
SAF	207	20	1.688	2.313	0.943	29516-7129	SAF	222	123	5.000	5.980	1.175	29516-7102
SAF	208	17	1.438	2.063	0.943	29516-5432	SAF	224	117	4.438	5.543	1.175	29516-7099
SAF	208	18	1.500	2.063	0.943	29516-7128	SAF	224	118	4.500	5.543	1.175	29516-7135
SAF	208	23	1.875	2.563	0.943	29516-7080	SAF	224	119	4.563	5.543	1.175	29516-7090
SAF	208	24	1.938	2.563	0.943	29516-7092	SAF	224	125	5.188	6.375	1.113	29516-5311
SAF	209	20	1.688	2.313	0.943	29516-7129	SAF	224	127	5.313	6.375	1.175	29516-7072
SAF	209	27	2.063	2.823	0.943	29516-7078	SAF	226	121	4.875	5.980	1.175	29516-7089
SAF	209	29	2.188	2.823	0.943	29516-7093	SAF	226	122	4.938	5.980	1.175	29516-7100
SAF	210	23	1.875	2.563	0.943	29516-7080	SAF	226	123	5.000	5.980	1.175	29516-7102
SAF	210	24	1.938	2.563	0.943	29516-7092	SAF	226	134	5.750	6.938	1.116	29516-7126
SAF	210	35	2.375	2.948	0.943	29516-7081	SAF	226	136	5.875	6.938	1.116	29516-7125
SAF	211	27	2.063	2.823	0.943	29516-7078	SAF	228	125	5.188	6.375	1.113	29516-5311
SAF	211	29	2.188	2.823	0.943	29516-7093	SAF	228	127	5.313	6.375	1.175	29516-7072
SAF	211	40	2.563	3.198	0.943	29516-7079	SAF	228	144	6.250	7.343	1.175	29516-7073
SAF	212	27	2.063	2.823	0.943	29516-7078	SAF	230	134	5.750	6.938	1.116	29516-7126
SAF	212	29	2.188	2.823	0.943	29516-7093	SAF	230	136	5.875	6.938	1.116	29516-7125
SAF	213	37	2.438	3.188	1.035	29516-7082	SAF	230	151	6.625	7.718	1.116	29516-7127
SAF	213	38	2.500	3.188	1.035	29516-7083	SAF	232	140	5.938	7.343	1.164	29516-7110
SAF	213	53	2.938	3.813	0.995	29516-7095	SAF	232	141	6.000	7.343	1.164	29516-5504
SAF	213	54	3.000	3.813	1.035	29516-7070	SAF	232	142	6.063	7.343	1.164	29516-7074
SAF	213	55	3.063	3.813	1.035	29516-7084	SAF	232	154	6.875	8.383	1.164	29516-7191
SAF	215	44	2.688	3.563	0.995	29516-7094	SAF	232	155	6.938	8.383	1.035	29516-7107
SAF	215	46	2.813	3.563	1.035	29516-7085	SAF	232	156	7.000	8.383	1.164	29516-7187
SAF	215	47	2.875	3.563	1.035	29516-7077	SAF	232	168	8.000	9.340	1.164	29516-7229
SAF	215	79	3.438	4.333	1.035	29516-7086	SAF	234	148	6.438	7.780	1.164	29516-7104
SAF	215	80	3.500	4.333	1.035	29516-7114	SAF	234	161	7.437	8.945	1.084	29516-7146
SAF	215	82	3.625	4.333	1.035	29516-7071	SAF	236	154	6.875	8.383	1.164	29516-7191
SAF	216	53	2.938	3.813	0.995	29516-7095	SAF	236	155	6.938	8.383	1.035	29516-7107
SAF	216	54	3.000	3.813	1.035	29516-7070	SAF	236	156	7.000	8.383	1.164	29516-7187
SAF	216	55	3.063	3.813	1.035	29516-7084	SAF	236	165	7.813	9.340	1.164	29516-7190
SAF	216	79	3.438	4.333	1.035	29516-7086	SAF	236	167	7.938	9.340	1.164	29516-7196
SAF	216	80	3.500	4.333	1.035	29516-7114	SAF	238	159	7.188	8.570	1.164	29516-7195
SAF	216	82	3.625	4.333	1.035	29516-7071	SAF	238	160	7.250	8.570	1.164	29516-7226
SAF	217	63	3.188	4.083	1.035	29516-7156	SAF	238	164	7.625	8.945	1.164	29516-7230
SAF	217	89	3.938	4.708	1.035	29516-7158	SAF	238	165	7.813	9.340	1.164	29516-7190
SAF	218	69	3.188	4.335	1.050	29516-7108	SAF	238	177	9.840	10.215	1.164	29516-7231
SAF	218	70	3.250	4.335	1.158	29516-7096	SAF	238	229	7.250	8.570	1.335	29516-7212
SAF	218	72	3.375	4.335	1.158	29516-5124	SAF	238	229	7.250	8.570	1.335	29516-7212
SAF	218	96	4.125	5.085	1.158	29516-5125	SAF	238	240	8.375	9.840	1.335	29516-7214
SAF	218	191	3.375	4.335	1.175	29516-5272	SAF	238	240	8.375	9.840	1.335	29516-7214
SAF	219	75	3.438	4.523	1.050	29516-7113	SAF	240	161	7.437	8.945	1.084	29516-7146
SAF	219	76	3.500	4.523	1.158	29516-7097	SAF	240	175	8.750	10.215	1.164	29516-7227
SAF	220	106	3.813	4.773	1.175	29516-7087	SAF	240	184	2.938	3.940	1.175	29516-7106

Continued on page 16

Non-Metallic Isolator (Glass-Filled PTFE) Interchange
by Split Pillow Block Number

Type	Basic Size	LER Ring	Shaft Dia.	Housing Dia.	Seal Width	Product Code
SAF	240	230	7.438	8.945	1.231	29516-7111
SAF	244	170	8.313	9.840	1.164	29516-7232
SAF	244	179	9.563	11.028	1.164	29516-7228
SAF	306	17	1.438	2.063	0.943	29516-5432
SAF	306	18	1.500	2.063	0.943	29516-7128
SAF	307	20	1.688	2.313	0.943	29516-7129
SAF	308	17	1.438	2.063	0.943	29516-5432
SAF	308	18	1.500	2.063	0.943	29516-7128
SAF	308	23	1.875	2.563	0.943	29516-7080
SAF	308	24	1.938	2.563	0.943	29516-7092
SAF	309	20	1.688	2.313	0.943	29516-7129
SAF	309	27	2.063	2.823	0.943	29516-7078
SAF	309	29	2.188	2.823	0.943	29516-7093
SAF	310	23	1.875	2.563	0.943	29516-7080
SAF	310	24	1.938	2.563	0.943	29516-7092
SAF	310	35	2.375	2.948	0.943	29516-7081
SAF	311	27	2.063	2.823	0.943	29516-7078
SAF	311	29	2.188	2.823	0.943	29516-7093
SAF	311	40	2.563	3.198	0.943	29516-7079
SAF	312	32	2.188	2.938	1.035	29516-7105
SAF	312	33	2.250	2.938	1.035	29516-7076
SAF	312	44	2.688	3.563	0.995	29516-7094
SAF	312	46	2.813	3.563	1.035	29516-7085
SAF	312	47	2.875	3.563	1.035	29516-7077
SAF	313	37	2.438	3.188	1.035	29516-7082
SAF	313	38	2.500	3.188	1.035	29516-7083
SAF	313	53	2.938	3.813	0.995	29516-7095
SAF	313	54	3.000	3.813	1.035	29516-7070
SAF	313	55	3.063	3.813	1.035	29516-7084
SAF	314	44	2.688	3.563	0.995	29516-7094
SAF	314	46	2.813	3.563	1.035	29516-7085
SAF	314	47	2.875	3.563	1.035	29516-7077
SAF	314	63	3.188	4.083	1.035	29516-7156
SAF	315	44	2.688	3.563	0.995	29516-7094
SAF	315	46	2.813	3.563	1.035	29516-7085
SAF	315	47	2.875	3.563	1.035	29516-7077
SAF	315	79	3.438	4.333	1.035	29516-7086
SAF	315	80	3.500	4.333	1.035	29516-7114
SAF	315	82	3.625	4.333	1.035	29516-7071
SAF	316	84	3.625	4.773	1.158	29516-7210
SAF	317	69	3.188	4.335	1.050	29516-7108
SAF	317	70	3.250	4.335	1.158	29516-7096
SAF	317	72	3.375	4.335	1.158	29516-5124
SAF	317	93	3.938	5.085	1.050	29516-7133
SAF	317	96	4.125	5.085	1.158	29516-5125
SAF	317	109	3.938	4.960	1.175	29516-7098
SAF	317	110	4.000	4.960	1.035	29516-7175
SAF	317	188	3.188	4.335	0.994	29516-5131
SAF	317	191	3.375	4.335	1.175	29516-5272
SAF	318	69	3.188	4.335	1.050	29516-7108
SAF	318	70	3.250	4.335	1.158	29516-7096
SAF	318	72	3.375	4.335	1.158	29516-5124

Type	Basic Size	LER Ring	Shaft Dia.	Housing Dia.	Seal Width	Product Code
SAF	318	96	4.125	5.085	1.158	29516-5125
SAF	318	112	4.125	5.230	1.033	29516-7137
SAF	318	113	4.188	5.230	1.175	29516-7088
SAF	318	188	3.188	4.335	0.994	29516-5131
SAF	318	191	3.375	4.335	1.175	29516-5272
SAF	319	75	3.438	4.523	1.050	29516-7113
SAF	319	76	3.500	4.523	1.158	29516-7097
SAF	320	106	3.813	4.773	1.175	29516-7087
SAF	320	117	4.438	5.543	1.175	29516-7099
SAF	320	118	4.500	5.543	1.175	29516-7135
SAF	320	119	4.563	5.543	1.175	29516-7090
SAF	321	93	3.938	5.085	1.050	29516-7133
SAF	321	96	4.125	5.085	1.158	29516-5125
SAF	322	112	4.125	5.230	1.033	29516-7137
SAF	322	113	4.188	5.230	1.175	29516-7088
SAF	322	121	4.875	5.980	1.175	29516-7089
SAF	322	122	4.938	5.980	1.175	29516-7100
SAF	322	123	5.000	5.980	1.175	29516-7102
SAF	324	117	4.438	5.543	1.175	29516-7099
SAF	324	118	4.500	5.543	1.175	29516-7135
SAF	324	119	4.563	5.543	1.175	29516-7090
SAF	324	125	5.188	6.375	1.113	29516-5311
SAF	324	127	5.313	6.375	1.175	29516-7072
SAF	326	121	4.875	5.980	1.175	29516-7089
SAF	326	122	4.938	5.980	1.175	29516-7100
SAF	326	123	5.000	5.980	1.175	29516-7102
SAF	326	134	5.750	6.938	1.116	29516-7126
SAF	326	136	5.875	6.938	1.116	29516-7125
SAF	328	125	5.188	6.375	1.113	29516-5311
SAF	328	127	5.313	6.375	1.175	29516-7072
SAF	328	144	6.250	7.343	1.175	29516-7073
SAF	330	134	5.750	6.938	1.116	29516-7126
SAF	330	136	5.875	6.938	1.116	29516-7125
SAF	330	151	6.625	7.718	1.116	29516-7127
SAF	332	140	5.938	7.343	1.164	29516-7110
SAF	332	141	6.000	7.343	1.164	29516-5504
SAF	332	142	6.063	7.343	1.164	29516-7074
SAF	332	154	6.875	8.383	1.164	29516-7191
SAF	332	155	6.938	8.383	1.035	29516-7107
SAF	332	156	7.000	8.383	1.164	29516-7187
SAF	332	215	5.938	7.343	1.335	29516-7167
SAF	332	224	6.938	8.383	1.335	29516-7109
SAF	334	161	7.437	8.945	1.084	29516-7146
SAF	334	230	7.438	8.945	1.231	29516-7111
SAF	336	224	6.938	8.383	1.335	29516-7109
SAF	338	159	7.188	8.570	1.164	29516-7195
SAF	340	230	7.438	8.945	1.231	29516-7111
SAF	340	233	7.625	8.945	1.335	29516-7202
SAF	340	244	8.750	10.215	1.335	29516-7201
SAF	509	17	1.438	2.063	0.943	29516-5432
SAF	509	18	1.500	2.063	0.943	29516-7128
SAF	510	20	1.688	2.313	0.943	29516-7129

Continued on page 17

TIMKEN SPLIT PILLOW APPLICATIONS

Non-Metallic Isolator (Glass-Filled PTFE) Interchange

by Split Pillow Block Number

Type	Basic Size	LER Ring	Shaft Dia.	Housing Dia.	Seal Width	Product Code
SAF	511	23	1.875	2.563	0.943	29516-7080
SAF	511	24	1.938	2.563	0.943	29516-7092
SAF	513	27	2.063	2.823	0.943	29516-7078
SAF	513	29	2.188	2.823	0.943	29516-7093
SAF	515	37	2.438	3.188	1.035	29516-7082
SAF	515	38	2.500	3.188	1.035	29516-7083
SAF	516	44	2.688	3.563	0.995	29516-7094
SAF	516		2.756	3.563	1.035	29516-7233
SAF	517	53	2.938	3.813	0.995	29516-7095
SAF	517	53	2.953	3.813	0.883	29516-7169
SAF	517	54	3.000	3.813	1.035	29516-7070
SAF	518	69	3.188	4.335	1.050	29516-7108
SAF	518	70	3.250	4.335	1.158	29516-7096
SAF	520	75	3.438	4.523	1.050	29516-7113
SAF	520	76	3.500	4.523	1.158	29516-7097
SAF	520	102	3.438	4.460	1.175	29516-7112
SAF	520	103	3.500	4.460	1.175	29516-7182
SAF	522	93	3.938	5.085	1.050	29516-7133
SAF	522	109	3.938	4.960	1.175	29516-7098
SAF	522	110	4.000	4.960	1.035	29516-7175
SAF	524	112	4.125	5.230	1.033	29516-7137
SAF	524	113	4.188	5.230	1.175	29516-7088
SAF	526	117	4.438	5.543	1.175	29516-7099
SAF	526	118	4.500	5.543	1.175	29516-7135
SAF	528	121	4.875	5.980	1.175	29516-7089
SAF	528	122	4.938	5.980	1.175	29516-7100
SAF	528	123	5.000	5.980	1.175	29516-7102
SAF	530	125	5.188	6.375	1.113	29516-5311
SAF	530	127	5.313	6.375	1.175	29516-7072
SAF	531	141	6.000	7.343	1.164	29516-5504
SAF	532	130	5.438	6.750	1.164	29516-7103
SAF	532	131	5.500	6.750	1.164	29516-7150
SAF	534	140	5.938	7.343	1.164	29516-7110
SAF	536	148	6.438	7.780	1.164	29516-7104
SAF	538	154	6.875	8.383	1.164	29516-7191
SAF	538	155	6.938	8.383	1.035	29516-7107
SAF	538	156	7.000	8.383	1.164	29516-7187
SAF	538	224	6.938	8.383	1.335	29516-7109
SAF	540	159	7.188	8.570	1.164	29516-7195
SAF	540	159 (180mm)	7.087	8.570	1.164	29516-7216
SAF	544	24	1.938	2.563	0.943	29516-7092
SAF	544	165	7.813	9.340	1.164	29516-7190
SAF	544	167	7.938	9.340	1.164	29516-7196
SAF	609	17	1.438	2.063	0.943	29516-5432
SAF	609	18	1.500	2.063	0.943	29516-7128
SAF	610	20	1.688	2.313	0.943	29516-7129
SAF	611	23	1.875	2.563	0.943	29516-7080
SAF	611	24	1.938	2.563	0.943	29516-7092
SAF	612	24	1.938	2.563	0.943	29516-7092
SAF	613	32	2.188	2.938	1.035	29516-7105
SAF	613	33	2.250	2.938	1.035	29516-7076
SAF	615	37	2.438	3.188	1.035	29516-7082

Type	Basic Size	LER Ring	Shaft Dia.	Housing Dia.	Seal Width	Product Code
SAF	615	38	2.500	3.188	1.035	29516-7083
SAF	616	44	2.688	3.563	0.995	29516-7094
SAF	617	184	2.938	3.940	1.175	29516-7106
SAF	618	69	3.188	4.335	1.050	29516-7108
SAF	618	70	3.250	4.335	1.158	29516-7096
SAF	618	188	3.188	4.335	0.994	29516-5131
SAF	620	75	3.438	4.523	1.050	29516-7113
SAF	620	76	3.500	4.523	1.158	29516-7097
SAF	620	102	3.438	4.460	1.175	29516-7112
SAF	620	103	3.500	4.460	1.175	29516-7182
SAF	620		3.543	4.460	1.175	29516-7209
SAF	622	93	3.938	5.085	1.050	29516-7133
SAF	622	109	3.938	4.960	1.175	29516-7098
SAF	622	110	4.000	4.960	1.035	29516-7175
SAF	624	112	4.125	5.230	1.033	29516-7137
SAF	624	113	4.188	5.230	1.175	29516-7088
SAF	626	117	4.438	5.543	1.175	29516-7099
SAF	626	118	4.500	5.543	1.175	29516-7135
SAF	628	121	4.875	5.980	1.175	29516-7089
SAF	628	122	4.938	5.980	1.175	29516-7100
SAF	628	123	5.000	5.980	1.175	29516-7102
SAF	630	125	5.188	6.375	1.113	29516-5311
SAF	630	127	5.313	6.375	1.175	29516-7072
SAF	632	130	5.438	6.750	1.164	29516-7103
SAF	632	131	5.500	6.750	1.164	29516-7150
SAF	634	140	5.938	7.343	1.164	29516-7110
SAF	634	141	6.000	7.343	1.164	29516-5504
SAF	634	215	5.938	7.343	1.335	29516-7167
SAF	638	154	6.875	8.383	1.164	29516-7191
SAF	638	155	6.938	8.383	1.035	29516-7107
SAF	638	156	7.000	8.383	1.164	29516-7187
SAF	638	224	6.938	8.383	1.335	29516-7109
SNH	213		2.913	3.976	0.764	29516-7151
SNH	213		2.953	3.976	0.768	29516-7152
SNH	216		3.150	4.587	0.764	29516-7197
SNH	218		3.543	5.059	0.764	29516-7198
SNH	315		2.953	4.094	0.948	29516-7219
SNH	509		1.575	2.539	0.725	29516-7184
SNH	517		2.938	4.173	0.814	29516-7115
SNH	526		4.938	6.988	0.867	29516-7123
SNH	526		4.500	6.988	0.807	29516-7148
SNH	528		4.938	7.382	0.918	29516-7134
SNH	528		4.921	7.382	0.804	29516-7185
SNH	532		5.512	8.366	0.804	29516-7186
SNH	215 TG		3.346	4.370	0.764	29516-7142
SNH	507-606		1.654	2.146	0.725	29516-7208
SNH	510-308		1.772	2.776	0.767	29516-7159
SNH	511-609		1.938	2.972	0.725	29516-7160
SNH	513-611		2.362	3.366	0.788	29516-7136
SNH	513-611		1.969	3.366	0.764	29516-7199
SNH	515-612		2.559	3.760	0.788	29516-5411
SNH	515-612		2.438	3.760	0.766	29516-7139

Continued on page 18

Non-Metallic Isolator (Glass-Filled PTFE) Interchange
by Split Pillow Block Number

Type	Basic Size	LER Ring	Shaft Dia.	Housing Dia.	Seal Width	Product Code
SNH	515-612		2.438	3.225	0.800	29516-7141
SNH	515-612		2.566	3.760	0.765	29516-7183
SNH	517-615		2.500	4.370	0.722	29516-7174
SNH	518-615		2.750	4.370	0.722	29516-7173
SNH	520-617		3.437	5.807	1.033	29516-0016
SNH	520-617		3.937	5.807	0.828	29516-5113
SNH	520-617		3.437	5.807	0.806	29516-7116
SNH	522-619		3.937	6.201	0.804	29516-7117
SNH	522-619		4.437	6.201	0.828	29516-7122
SNH	524-620		4.331	6.594	0.804	29516-7194
SNL	511		1.969	2.972	0.752	29516-7176

Type	Basic Size	LER Ring	Shaft Dia.	Housing Dia.	Seal Width	Product Code
SNL	510-608		1.688	2.776	0.725	29516-7161
SNL	510-608		2.112	2.776	0.725	29516-7179
SNL	513-611		2.787	3.366	0.765	29516-7180
SNL	513-611		2.559	3.366	0.765	29516-7181
SNL	516-613		2.756	3.976	0.765	29516-7177
SNL	516-613		3.307	3.976	0.765	29516-7178
SNL	518-615		2.559	4.370	0.767	29516-7165
SNL	520-617		3.543	5.807	0.806	29516-7162
SNL	520-617		2.938	5.807	0.806	29516-7163
SNL	573-611		2.250	3.366	0.765	29516-7188
SNV	100		2.000	3.366		29516-7204

TIMKEN SPLIT PILLOW APPLICATIONS

Non-Metallic Isolator (Graphite-Filled PTFE) Interchange

by Split Pillow Block Number

Type	Basic Size	LER Ring	Shaft Dia.	Housing Dia.	Seal Width	Product Code
DODGE	517	53	2.938	3.813	1.265	29616-7215
SAF	206	17	1.438	2.063	1.173	29616-5432
SAF	206	18	1.500	2.063	1.173	29616-7128
SAF	207	20	1.688	2.313	1.173	29616-7129
SAF	208	17	1.438	2.063	1.173	29616-5432
SAF	208	18	1.500	2.063	1.173	29616-7128
SAF	208	23	1.875	2.563	1.173	29616-7080
SAF	208	24	1.938	2.563	1.173	29616-7092
SAF	209	20	1.688	2.313	1.173	29616-7129
SAF	209	27	2.063	2.823	1.173	29616-7078
SAF	209	29	2.188	2.823	1.173	29616-7093
SAF	210	23	1.875	2.563	1.173	29616-7080
SAF	210	24	1.938	2.563	1.173	29616-7092
SAF	210	35	2.375	2.948	1.173	29616-7081
SAF	211	27	2.063	2.823	1.173	29616-7078
SAF	211	29	2.188	2.823	1.173	29616-7093
SAF	211	40	2.563	3.198	1.173	29616-7079
SAF	212	27	2.063	2.823	1.173	29616-7078
SAF	212	29	2.188	2.823	1.173	29616-7093
SAF	213	37	2.438	3.188	1.265	29616-7082
SAF	213	38	2.500	3.188	1.265	29616-7083
SAF	213	53	2.938	3.813	1.265	29616-7095
SAF	213	54	3.000	3.813	1.265	29616-7070
SAF	213	55	3.063	3.813	1.265	29616-7084
SAF	215	44	2.688	3.563	1.265	29616-7094
SAF	215	46	2.813	3.563	1.265	29616-7085
SAF	215	47	2.875	3.563	1.265	29616-7077
SAF	215	79	3.438	4.333	1.265	29616-7086
SAF	215	80	3.500	4.333	1.265	29616-7114
SAF	215	82	3.625	4.333	1.265	29616-7071
SAF	216	53	2.938	3.813	1.265	29616-7095
SAF	216	54	3.000	3.813	1.265	29616-7070
SAF	216	55	3.063	3.813	1.265	29616-7084
SAF	216	79	3.438	4.333	1.265	29616-7086
SAF	216	80	3.500	4.333	1.265	29616-7114
SAF	216	82	3.625	4.333	1.265	29616-7071
SAF	217	63	3.188	4.083	1.265	29616-7156
SAF	217	89	3.938	4.708	1.265	29616-7158
SAF	218	69	3.188	4.335	1.283	29616-7108
SAF	218	70	3.250	4.335	1.283	29616-7096
SAF	218	72	3.375	4.335	1.283	29616-5124
SAF	218	96	4.125	5.085	1.283	29616-5125
SAF	219	75	3.438	4.523	1.283	29616-7113
SAF	219	76	3.500	4.523	1.283	29616-7097
SAF	220	106	3.813	4.773	1.297	29616-7087
SAF	220	117	4.438	5.543	1.297	29616-7099
SAF	220	118	4.500	5.543	1.297	29616-7135
SAF	220	119	4.563	5.543	1.297	29616-7090
SAF	221	93	3.938	5.085	1.283	29616-7133
SAF	221	96	4.125	5.085	1.283	29616-5125
SAF	222	112	4.125	5.230	1.297	29616-7137
SAF	222	113	4.188	5.230	1.297	29616-7088

Type	Basic Size	LER Ring	Shaft Dia.	Housing Dia.	Seal Width	Product Code
SAF	222	121	4.875	5.980	1.297	29616-7089
SAF	222	122	4.938	5.980	1.297	29616-7100
SAF	222	123	5.000	5.980	1.297	29616-7102
SAF	224	117	4.438	5.543	1.297	29616-7099
SAF	224	118	4.500	5.543	1.297	29616-7135
SAF	224	119	4.563	5.543	1.297	29616-7090
SAF	224	125	5.188	6.375	1.297	29616-5311
SAF	224	127	5.313	6.375	1.297	29616-7072
SAF	226	121	4.875	5.980	1.297	29616-7089
SAF	226	122	4.938	5.980	1.297	29616-7100
SAF	226	123	5.000	5.980	1.297	29616-7102
SAF	226	134	5.750	6.938	1.297	29616-7126
SAF	226	136	5.875	6.938	1.297	29616-7125
SAF	228	125	5.188	6.375	1.297	29616-5311
SAF	228	127	5.313	6.375	1.297	29616-7072
SAF	228	144	6.250	7.343	1.297	29616-7073
SAF	230	134	5.750	6.938	1.297	29616-7126
SAF	230	136	5.875	6.938	1.297	29616-7125
SAF	230	151	6.625	7.718	1.297	29616-7127
SAF	232	140	5.938	7.343	1.308	29616-7110
SAF	232	141	6.000	7.343	1.308	29616-5504
SAF	232	142	6.063	7.343	1.308	29616-7074
SAF	232	154	6.875	8.383	1.308	29616-7191
SAF	232	155	6.938	8.383	1.308	29616-7107
SAF	232	156	7.000	8.383	1.308	29616-7187
SAF	234	148	6.438	7.780	1.308	29616-7104
SAF	234	161	7.437	8.945	1.308	29616-7146
SAF	236	154	6.875	8.383	1.308	29616-7191
SAF	236	155	6.938	8.383	1.308	29616-7107
SAF	236	156	7.000	8.383	1.308	29616-7187
SAF	236	165	7.813	9.340	1.308	29616-7190
SAF	236	167	7.938	9.340	1.308	29616-7196
SAF	238	159	7.188	8.570	1.308	29616-7195
SAF	238	229	7.250	8.570	1.387	29616-7212
SAF	238	229	7.250	8.570	1.387	29616-7212
SAF	238	240	8.375	9.840	1.387	29616-7214
SAF	238	240	8.375	9.840	1.387	29616-7214
SAF	240	161	7.437	8.945	1.308	29616-7146
SAF	240	230	7.438	8.945	1.387	29616-7111
SAF	306	17	1.438	2.063	1.173	29616-5432
SAF	306	18	1.500	2.063	1.173	29616-7128
SAF	307	20	1.688	2.313	1.173	29616-7129
SAF	308	17	1.438	2.063	1.173	29616-5432
SAF	308	18	1.500	2.063	1.173	29616-7128
SAF	308	23	1.875	2.563	1.173	29616-7080
SAF	308	24	1.938	2.563	1.173	29616-7092
SAF	309	20	1.688	2.313	1.173	29616-7129
SAF	309	27	2.063	2.823	1.173	29616-7078
SAF	309	29	2.188	2.823	1.173	29616-7093
SAF	310	23	1.875	2.563	1.173	29616-7080
SAF	310	24	1.938	2.563	1.173	29616-7092
SAF	310	35	2.375	2.948	1.173	29616-7081

Continued on page 20

Non-Metallic Isolator (Graphite-Filled PTFE) Interchange

by Split Pillow Block Number

Type	Basic Size	LER Ring	Shaft Dia.	Housing Dia.	Seal Width	Product Code
SAF	311	27	2.063	2.823	1.173	29616-7078
SAF	311	29	2.188	2.823	1.173	29616-7093
SAF	311	40	2.563	3.198	1.173	29616-7079
SAF	312	32	2.188	2.938	1.265	29616-7105
SAF	312	33	2.250	2.938	1.265	29616-7076
SAF	312	44	2.688	3.563	1.265	29616-7094
SAF	312	46	2.813	3.563	1.265	29616-7085
SAF	312	47	2.875	3.563	1.265	29616-7077
SAF	313	37	2.438	3.188	1.265	29616-7082
SAF	313	38	2.500	3.188	1.265	29616-7083
SAF	313	53	2.938	3.813	1.265	29616-7095
SAF	313	54	3.000	3.813	1.265	29616-7070
SAF	313	55	3.063	3.813	1.265	29616-7084
SAF	314	44	2.688	3.563	1.265	29616-7094
SAF	314	46	2.813	3.563	1.265	29616-7085
SAF	314	47	2.875	3.563	1.265	29616-7077
SAF	314	63	3.188	4.083	1.265	29616-7156
SAF	315	44	2.688	3.563	1.265	29616-7094
SAF	315	46	2.813	3.563	1.265	29616-7085
SAF	315	47	2.875	3.563	1.265	29616-7077
SAF	315	79	3.438	4.333	1.265	29616-7086
SAF	315	80	3.500	4.333	1.265	29616-7114
SAF	315	82	3.625	4.333	1.265	29616-7071
SAF	316	60	3.000	3.940	1.283	29616-7211
SAF	316	84	3.625	4.773	1.283	29616-7210
SAF	317	69	3.188	4.335	1.283	29616-7108
SAF	317	70	3.250	4.335	1.283	29616-7096
SAF	317	72	3.375	4.335	1.283	29616-5124
SAF	317	93	3.938	5.085	1.283	29616-7133
SAF	317	96	4.125	5.085	1.283	29616-5125
SAF	317	109	3.938	4.960	1.297	29616-7098
SAF	317	110	4.000	4.960	1.297	29616-7175
SAF	317	188	3.188	4.335	1.297	29616-5131
SAF	317	191	3.375	4.335	1.297	29616-5272
SAF	318	69	3.188	4.335	1.283	29616-7108
SAF	318	70	3.250	4.335	1.283	29616-7096
SAF	318	72	3.375	4.335	1.283	29616-5124
SAF	318	96	4.125	5.085	1.283	29616-5125
SAF	318	112	4.125	5.230	1.297	29616-7137
SAF	318	113	4.188	5.230	1.297	29616-7088
SAF	318	188	3.188	4.335	1.297	29616-5131
SAF	318	191	3.375	4.335	1.297	29616-5272
SAF	319	75	3.438	4.523	1.283	29616-7113
SAF	319	76	3.500	4.523	1.283	29616-7097
SAF	320	106	3.813	4.773	1.297	29616-7087
SAF	320	117	4.438	5.543	1.297	29616-7099
SAF	320	118	4.500	5.543	1.297	29616-7135
SAF	320	119	4.563	5.543	1.297	29616-7090
SAF	321	93	3.938	5.085	1.283	29616-7133
SAF	321	96	4.125	5.085	1.283	29616-5125
SAF	322	112	4.125	5.230	1.297	29616-7137
SAF	322	113	4.188	5.230	1.297	29616-7088

Type	Basic Size	LER Ring	Shaft Dia.	Housing Dia.	Seal Width	Product Code
SAF	322	121	4.875	5.980	1.297	29616-7089
SAF	322	122	4.938	5.980	1.297	29616-7100
SAF	322	123	5.000	5.980	1.297	29616-7102
SAF	324	117	4.438	5.543	1.297	29616-7099
SAF	324	118	4.500	5.543	1.297	29616-7135
SAF	324	119	4.563	5.543	1.297	29616-7090
SAF	324	125	5.188	6.375	1.297	29616-5311
SAF	324	127	5.313	6.375	1.297	29616-7072
SAF	326	121	4.875	5.980	1.297	29616-7089
SAF	326	122	4.938	5.980	1.297	29616-7100
SAF	326	123	5.000	5.980	1.297	29616-7102
SAF	326	134	5.750	6.938	1.297	29616-7126
SAF	326	136	5.875	6.938	1.297	29616-7125
SAF	328	125	5.188	6.375	1.297	29616-5311
SAF	328	127	5.313	6.375	1.297	29616-7072
SAF	328	144	6.250	7.343	1.297	29616-7073
SAF	330	134	5.750	6.938	1.297	29616-7126
SAF	330	136	5.875	6.938	1.297	29616-7125
SAF	330	151	6.625	7.718	1.297	29616-7127
SAF	332	140	5.938	7.343	1.308	29616-7110
SAF	332	141	6.000	7.343	1.308	29616-5504
SAF	332	142	6.063	7.343	1.308	29616-7074
SAF	332	154	6.875	8.383	1.308	29616-7191
SAF	332	155	6.938	8.383	1.308	29616-7107
SAF	332	156	7.000	8.383	1.308	29616-7187
SAF	332	215	5.938	7.343	1.387	29616-7167
SAF	332	224	6.938	8.383	1.387	29616-7109
SAF	334	161	7.437	8.945	1.308	29616-7146
SAF	334	230	7.438	8.945	1.387	29616-7111
SAF	336	224	6.938	8.383	1.387	29616-7109
SAF	338	159	7.188	8.570	1.308	29616-7195
SAF	340	230	7.438	8.945	1.387	29616-7111
SAF	340	233	7.625	8.945	1.387	29616-7202
SAF	340	244	8.750	10.215	1.387	29616-7201
SAF	509	17	1.438	2.063	1.173	29616-5432
SAF	509	18	1.500	2.063	1.173	29616-7128
SAF	510	20	1.688	2.313	1.173	29616-7129
SAF	511	23	1.875	2.563	1.173	29616-7080
SAF	511	24	1.938	2.563	1.173	29616-7092
SAF	513	27	2.063	2.823	1.173	29616-7078
SAF	513	29	2.188	2.823	1.173	29616-7093
SAF	515	37	2.438	3.188	1.265	29616-7082
SAF	515	38	2.500	3.188	1.265	29616-7083
SAF	516	44	2.688	3.563	1.265	29616-7094
SAF	517	53	2.938	3.813	1.265	29616-7095
SAF	517	53	2.953	3.813	1.265	29616-7169
SAF	517	54	3.000	3.813	1.265	29616-7070
SAF	518	69	3.188	4.335	1.283	29616-7108
SAF	518	70	3.250	4.335	1.283	29616-7096
SAF	520	75	3.438	4.523	1.283	29616-7113
SAF	520	76	3.500	4.523	1.283	29616-7097
SAF	520	102	3.438	4.460	1.297	29616-7112

Continued on page 21

TIMKEN SPLIT PILLOW APPLICATIONS

Non-Metallic Isolator (Graphite-Filled PTFE) Interchange
by Split Pillow Block Number

Type	Basic Size	LER Ring	Shaft Dia.	Housing Dia.	Seal Width	Product Code
SAF	520	103	3.500	4.460	1.297	29616-7182
SAF	522	93	3.938	5.085	1.283	29616-7133
SAF	522	109	3.938	4.960	1.297	29616-7098
SAF	522	110	4.000	4.960	1.297	29616-7175
SAF	524	112	4.125	5.230	1.297	29616-7137
SAF	524	113	4.188	5.230	1.297	29616-7088
SAF	526	117	4.438	5.543	1.297	29616-7099
SAF	526	118	4.500	5.543	1.297	29616-7135
SAF	528	121	4.875	5.980	1.297	29616-7089
SAF	528	122	4.938	5.980	1.297	29616-7100
SAF	528	123	5.000	5.980	1.297	29616-7102
SAF	530	125	5.188	6.375	1.297	29616-5311
SAF	530	127	5.313	6.375	1.297	29616-7072
SAF	531	141	6.000	7.343	1.308	29616-5504
SAF	532	130	5.438	6.750	1.308	29616-7103
SAF	532	131	5.500	6.750	1.308	29616-7150
SAF	534	140	5.938	7.343	1.308	29616-7110
SAF	536	148	6.438	7.780	1.308	29616-7104
SAF	538	154	6.875	8.383	1.308	29616-7191
SAF	538	155	6.938	8.383	1.308	29616-7107
SAF	538	156	7.000	8.383	1.308	29616-7187
SAF	538	224	6.938	8.383	1.387	29616-7109
SAF	540	159	7.188	8.570	1.308	29616-7195
SAF	544	24	1.938	2.563	1.173	29616-7092
SAF	544	165	7.813	9.340	1.308	29616-7190
SAF	544	167	7.938	9.340	1.308	29616-7196
SAF	609	17	1.438	2.063	1.173	29616-5432
SAF	609	18	1.500	2.063	1.173	29616-7128
SAF	610	20	1.688	2.313	1.173	29616-7129
SAF	611	23	1.875	2.563	1.173	29616-7080
SAF	611	24	1.938	2.563	1.173	29616-7092
SAF	612	24	1.938	2.563	1.173	29616-7092
SAF	613	32	2.188	2.938	1.265	29616-7105
SAF	613	33	2.250	2.938	1.265	29616-7076
SAF	615	37	2.438	3.188	1.265	29616-7082
SAF	615	38	2.500	3.188	1.265	29616-7083
SAF	616	44	2.688	3.563	1.265	29616-7094
SAF	617	184	2.938	3.940	1.297	29616-7106
SAF	618	69	3.188	4.335	1.283	29616-7108
SAF	618	70	3.250	4.335	1.283	29616-7096
SAF	618	188	3.188	4.335	1.297	29616-5131
SAF	620	75	3.438	4.523	1.283	29616-7113
SAF	620	76	3.500	4.523	1.283	29616-7097
SAF	620	102	3.438	4.460	1.297	29616-7112
SAF	620	103	3.500	4.460	1.297	29616-7182
SAF	622	93	3.938	5.085	1.283	29616-7133
SAF	622	109	3.938	4.960	1.297	29616-7098
SAF	622	110	4.000	4.960	1.297	29616-7175
SAF	624	112	4.125	5.230	1.297	29616-7137
SAF	624	113	4.188	5.230	1.297	29616-7088
SAF	626	117	4.438	5.543	1.297	29616-7099
SAF	626	118	4.500	5.543	1.297	29616-7135

Type	Basic Size	LER Ring	Shaft Dia.	Housing Dia.	Seal Width	Product Code
SAF	628	121	4.875	5.980	1.297	29616-7089
SAF	628	122	4.938	5.980	1.297	29616-7100
SAF	628	123	5.000	5.980	1.297	29616-7102
SAF	630	125	5.188	6.375	1.297	29616-5311
SAF	630	127	5.313	6.375	1.297	29616-7072
SAF	632	130	5.438	6.750	1.308	29616-7103
SAF	632	131	5.500	6.750	1.308	29616-7150
SAF	634	140	5.938	7.343	1.308	29616-7110
SAF	634	141	6.000	7.343	1.308	29616-5504
SAF	634	215	5.938	7.343	1.387	29616-7167
SAF	638	154	6.875	8.383	1.308	29616-7191
SAF	638	155	6.938	8.383	1.308	29616-7107
SAF	638	156	7.000	8.383	1.308	29616-7187
SAF	638	224	6.938	8.383	1.387	29616-7109
SNH	213		2.913	3.976	0.994	29616-7151
SNH	213		2.953	3.976	0.994	29616-7152
SNH	216		3.150	4.587	0.994	29616-7197
SNH	218		3.543	5.059	0.994	29616-7198
SNH	509		1.575	2.539	0.939	29616-7184
SNH	517		2.938	4.173	0.994	29616-7115
SNH	526		4.500	6.988	1.034	29616-7148
SNH	526		4.938	6.988	1.034	29616-7123
SNH	528		4.921	7.382	1.034	29616-7185
SNH	528		4.938	7.382	1.034	29616-7134
SNH	532		5.512	8.366	1.034	29616-7186
SNH	215 TG		3.346	4.370	0.994	29616-7142
SNH	507-606		1.654	2.146	0.955	29616-7208
SNH	510-308		1.772	2.776	0.939	29616-7159
SNH	511-609		1.938	2.972	0.939	29616-7160
SNH	513-611		1.969	3.366	0.994	29616-7199
SNH	513-611		2.362	3.366	0.994	29616-7136
SNH	515-612		2.438	3.760	0.994	29616-7139
SNH	515-612		2.438	3.225	0.994	29616-7141
SNH	515-612		2.559	3.760	0.994	29616-5411
SNH	515-612		2.566	3.760	0.994	29616-7183
SNH	518-615		2.750	4.370	0.994	29616-7173
SNH	520-617		3.437	5.807	0.994	29616-0016
SNH	520-617		3.437	5.807	0.994	29616-7116
SNH	520-617		3.937	5.807	0.994	29616-5113
SNH	522-619		3.937	6.201	0.994	29616-7117
SNH	522-619		4.437	6.201	0.994	29616-7122
SNH	524-620		4.331	6.594	1.034	29616-7194
SNL	511		1.969	2.972	0.939	29616-7176
SNL	510-608		1.688	2.776	0.939	29616-7161
SNL	510-608		2.112	2.776	0.939	29616-7179
SNL	513-611		2.559	3.366	0.994	29616-7181
SNL	513-611		2.787	3.366	0.994	29616-7180
SNL	516-613		2.756	3.976	0.994	29616-7177
SNL	516-613		3.307	3.976	0.994	29616-7178
SNL	518-615		2.559	4.370	0.994	29616-7165
SNL	520-617		2.938	5.807	0.994	29616-7163
SNL	520-617		3.543	5.807	0.994	29616-7162

Turn to Timken

Like all of our products and services, our seals are backed by our leading technical support and a vast distribution network. Turn to Timken today for a full line of Timken industrial seals that help improve bearing, equipment and bottom-line performance. Visit www.timken.com/industrialseals to learn more.

Distributed by The Timken Company.
Timken® Service Parts are carefully chosen from select manufacturers.
Keep clean and dry.

TIMKEN

The Timken team applies their know-how to improve the reliability and performance of machinery in diverse markets worldwide. The company designs, makes and markets high-performance mechanical components, including bearings, gears, belts, chain and related mechanical power transmission products and services.

Stronger. **Commitment.** Stronger. **Value.** Stronger. **Worldwide.** Stronger. **Together.** | Stronger. **By Design.**

www.timken.com