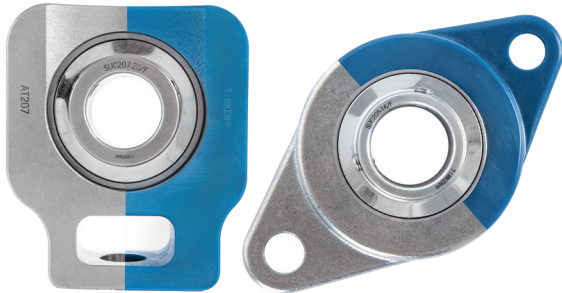


Hygienic stainless steel

Hygienic blue polymer (thermoset)



TIMKEN® HYGIENIC BALL BEARING HOUSED UNITS

UPGRADE FOOD SAFETY WITH TIMKEN® HYGIENIC BALL BEARING HOUSED UNITS.

Engineered to help you maintain the highest standards in food safety, our hygienic housed units deliver improved production uptime. Made from corrosion-resistant materials and available with food-grade Solid Lube, this premium product can withstand aggressive washdowns and a variety of wet and dry contaminants.

YOUR FIRST LINE OF DEFENSE

Available in optically detectable blue thermoset or stainless steel housings, our Ball Bearing Housed Units can help reduce ownership costs. Thanks to an easy-to-clean design, food-grade lubricant and Solid Lube, Ball Bearing Housed Units provide longer operating life and fewer maintenance events.

GAIN SOLUTIONS THAT:

Comply with Regulations

USDA-accepted hygienic housings feature smooth surfaces without reinforced bolt holes and comply with NSF/ANSI/3-A SSI 14159-1 – 2014. Bearings feature FDA-compliant NSF H1 food-grade lubricants.

Help Detect Contamination

Both optically detectable blue thermoset housing and metal-detectable ball bearing cage help detect foreign particles.

Simplify Cleaning

An optional QuiKlean® housing design avoids dead volume between the housing base and machinery, allowing washdown from all sides. Smooth housing surfaces with laser marking allow for effective removal of residue and reduced washdowns. Solid Lube option prevents grease purge.

Raise Productivity

Hygienic housings reduce downtime from mandatory cleanings and food-grade Solid Lube eliminates the need for relubrication.

Achieve Lower Cost of Ownership

Premium bearing units are engineered to reduce costs associated with washdown, downtime and product recalls.

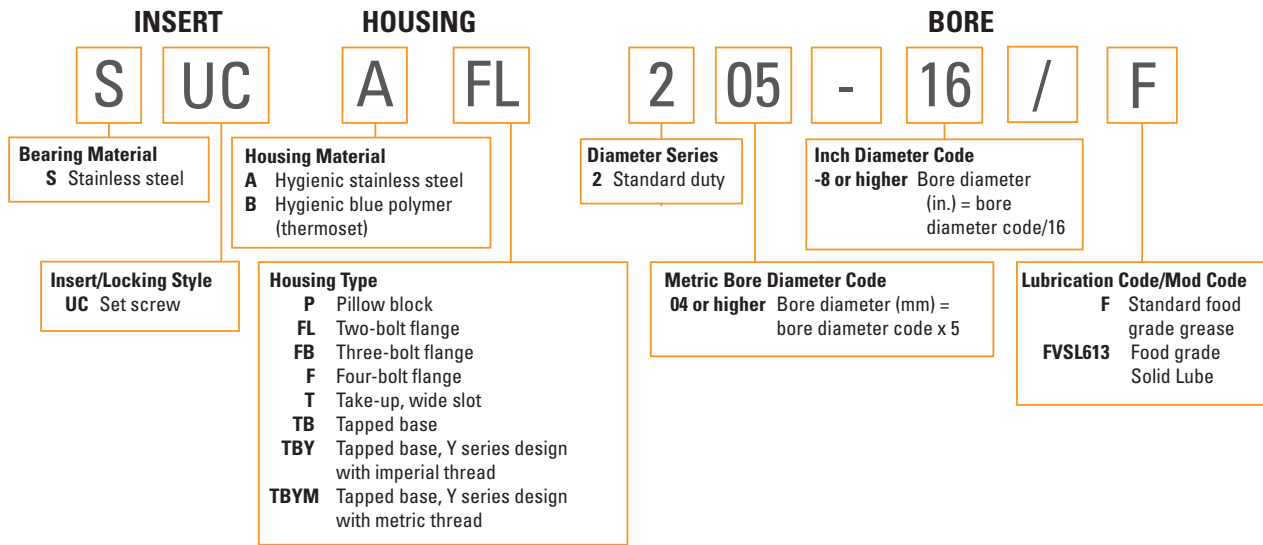
PRODUCT ADVANTAGES

- » Housings available in optically detectable blue thermoset or stainless steel in all mounting styles
- » Thermoset housings are cast to eliminate voids and increase strength
- » Stainless steel ball bearing inserts include set screw locking and metal cage and double lip seal
- » Interchange industry-standard mounted bearings from 20 mm to 50 mm (¾ in. to 2 in.)
- » USDA-accepted hygienic design
- » Designed for normal operation between -20° C and 100° C (-4° F and 212° F) and may vary with Solid Lube
- » Available with food-grade Solid Lube or food-grade grease relubricable option

A SMART SOLUTION FOR FOOD AND BEVERAGE PROCESSING

- » Conveyors
- » Mixers
- » Metal detectors
- » Check-weighers
- » Tumblers
- » Slicers
- » Breaders
- » Bottling machinery

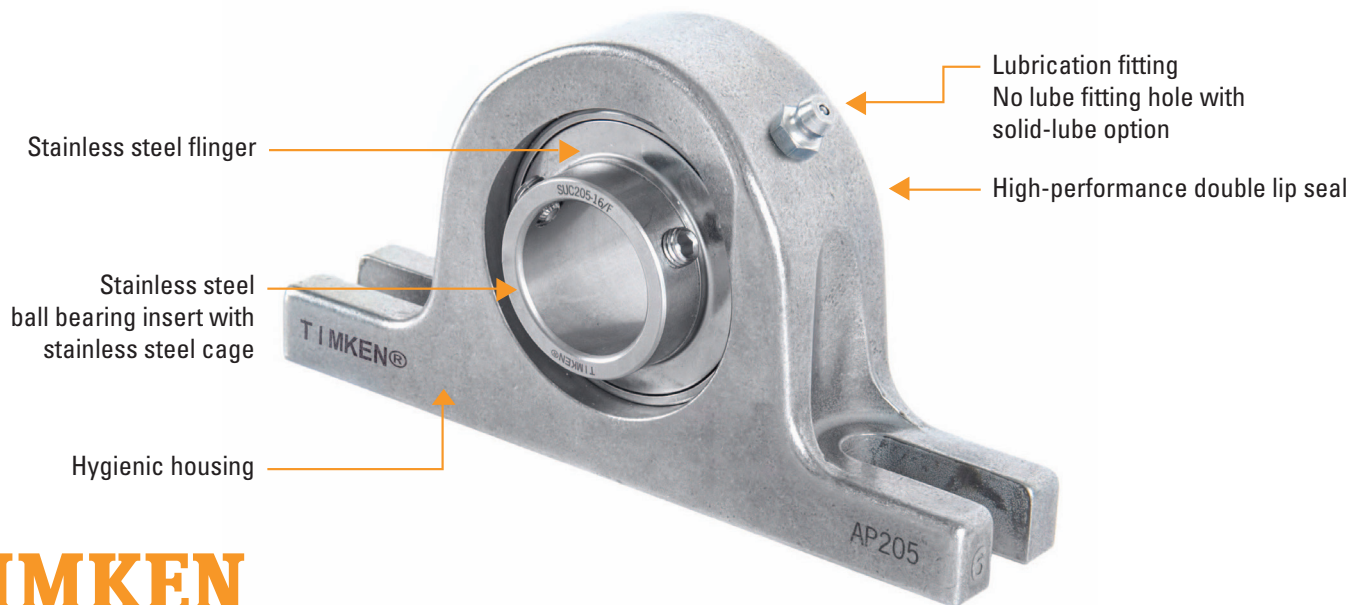
NOMENCLATURE



PRODUCT RANGE

Housing Style	Insert Series							
	204	205	206	207	208	209	210	
Pillow block (P)	B, A	B, A	B, A	B, A	B, A	B, A	B, A	
Two-bolt flange (FL)	B, A	B, A	B, A	B, A	B, A	B, A	B, A	
Three-bolt flange (FB)	B, A	B, A	B, A	B, A	B, A	B, A	B, A	
Four-bolt flange (F)	B, A	B, A	B, A	B, A	B, A	B, A	B, A	
Take-up, wide slot (T)	B, A	B, A	B, A	B, A	B, A	B, A	B, A	
Tapped base, Y series design with imperial thread (TBY)	B, A	B, A	B, A	B, A	B, A	B, A	B, A	

B - Hygienic Polymer Housing | A - Hygienic Stainless Housing



TIMKEN

The Timken team applies their know-how to improve the reliability and performance of machinery in diverse markets worldwide. The company designs, makes and markets bearings, gear drives, automated lubrication systems, belts, brakes, clutches, chain, couplings, linear motion products and related power transmission rebuild and repair services.

Stronger. By Design.

www.timken.com