

Excluder Seals

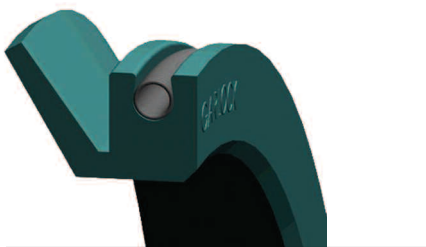
TIMKEN
Where You Turn

Providing Protection in Highly Contaminated Environments

Through our expertise in friction management, Timken helps customers around the world improve bearing and equipment performance. For more than 100 years, we've built our product line beyond bearings to include a variety of related parts and services. Our full line of Timken industrial seals provides a wide range of high performance sealing options, including our Timken excluder seals for highly contaminated environments.

Top of the Line for Top Performance

With different models, we have the right fit for your application.



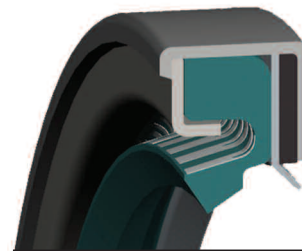
Model 145

- Available for shafts from 7" to 80" (178 to 2,032 mm) in cross sections from 0.5" (Model 145A-2) to 1.0" (Model 145A-1) [12.7 mm to 25.4 mm].
- Solid seal design.
- Seals tightly against a surface, perpendicular to a shaft.
- Seal lip maintains contact with the sealing surface, despite movement due to flexible hinge.



Model 143

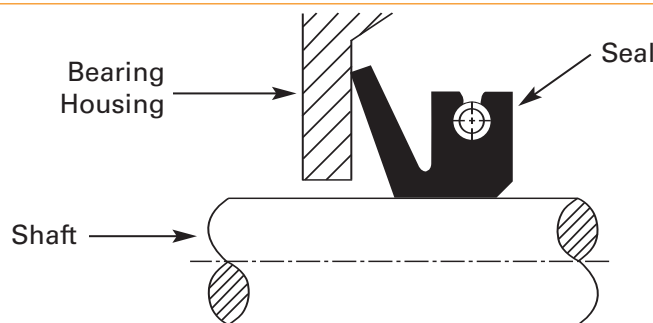
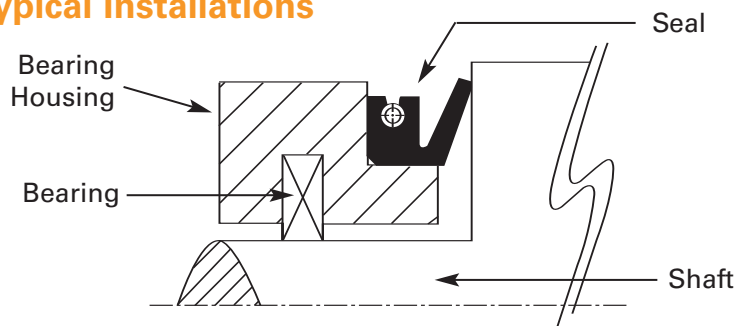
- Design is easily modified to fit your application.
- Small & large cross section available.
- Split seal design (not recommended if seal itself is rotating).



Model 59G1

- Excellent exclusion.
- High chemical compatibility.
- Other Models are also available with the 'G1' excluder seal.

Typical Installations

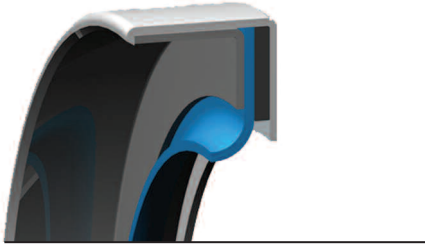


There are two typical excluder seal installations. The upper diagram depicts a seal installed on the housing. The lower diagram depicts a seal installed on the shaft.

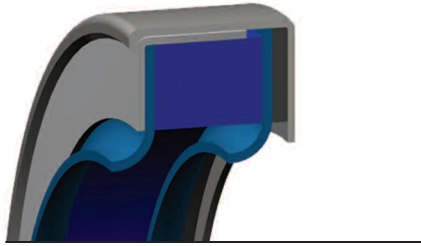
Timken Excluder Seals Featuring Model PS®-1

Proprietary sealing element design provides:

- *Superb sealing and exclusion of contaminants.*
- *Dry running capability up to 700 FPM (up to 2000 FPM with lubrication).*
- *Excellent chemical resistance.*
- *Pressure capability up to 150 psi (3.8 m/s).*
- *Ability to seal in thick, viscous fluids.*
- *Featuring engineered Gylon® material.*
- *Available in FDA approved materials.*
- *All metal components are standard stainless steel.*



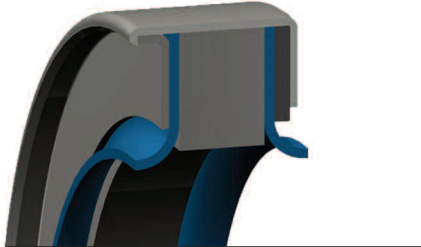
Single Lip Seal



Dual Tandem Seal



Reversed Lip Seal



Dual Opposed Lip Seal

Turn to Timken

Like all of our products and services, our seals are backed by our leading technical support and a vast distribution network. Turn to Timken today for a full line of Timken industrial seals that help improve bearing, equipment and bottom-line performance. Visit www.timken.com/industrialseals to learn more.

Distributed by The Timken Company. Timken® Service Parts are carefully chosen from select manufacturers. Keep clean and dry.

TIMKEN

Where You Turn

Bearings • Steel •
Precision Components • Lubrication •
Seals • Remanufacture and Repair •
Industrial Services
www.timken.com

Gylon® and PS®-1 are registered trademarks of Garlock Klozure

Timken® is a registered trademark of The Timken Company

©2006 The Timken Company
Printed in U.S.A.
25M 10-06-29 Order No. 10059