



### Related Products and Services

Industrial customers turn to Timken to provide comprehensive friction management solutions. Extending beyond bearings, these solutions include related parts and accessories, expert sales and service support, integrated logistics and a host of other programs to help keep your systems running efficiently. We help customers analyze performance and recommend solutions that make sense for their unique operating systems and conditions.

Other related products include:

- Grease and lubrication delivery systems.
- Maintenance tools such as induction heaters, impact fitting tools, mechanical pullers and self-centering hydraulic pullers.
- Seals.



For more information,  
contact 330.438.3000.

### Bearing Repairs

Used bearings and related components can often be returned to their original specifications using less time and money than purchasing new. Timken offers complete remanufacture and repair services for many components, including bearings, chocks, housings, rolls and more.

### Training

If you are an engineer seeking assistance with selecting appropriate products and services, a distributor who wants to provide the best available advice and products to your customers, or a maintenance professional interested in getting the maximum uptime and performance from your equipment, Timken can help.

We offer a variety of training resources, including:

- Predictive Maintenance 101.
- Bearing Maintenance.
- Vibration Analysis Level I and II.
- RCM2.
- Maintenance Software Training.
- Six Sigma.
- Other industry-specific topics such as rolling mill training.

# TIMKEN

Where You Turn

Bearings • Steel •  
Precision Components • Lubrication •  
Seals • Remanufacture and Repair •  
Industrial Services

[www.timken.com](http://www.timken.com)

Timken® is a registered trademark of  
The Timken Company

© 2008 The Timken Company  
Printed in U.S.A.  
3M 10-08-29 Order No. 7700

## Timken Reliability Solutions



In every industry, the goal is the same – maximize uptime, safety and profitability. Any unscheduled downtime must be avoided. Increasing the useful life and productivity of your machinery directly impacts the bottom line.

The Timken Company is your single source for reliability solutions, which includes services, portable instruments, continuous monitoring devices and wireless online systems.

When you choose Timken, you gain access to an industry leader with more than 100 years of experience. Our products, services, analysis and ongoing technical support help maximize your uptime, reduce maintenance costs and improve productivity. We can offer you any reliability solution—from the simplest to the most complex.

### StatusCheck™ Wireless Condition Monitoring System

- A unique wireless system designed to detect and monitor excessive levels of temperature and vibration.
- Flexible software with adjustable alarm thresholds.
- Dual mounting (magnetic or threaded).
- Simple interpretation (no vibration analysis training required).
- Intrinsically safe, Class 1, Div. 2, ATEX.
- **Plant Engineering** Product of the Year.



### Bearing Tester

- Portable and pocket-sized with built-in sensors.
- Measures shock pulses for early detection of bearing damage and marginal lube-film conditions.
- Infrared temperature sensor measures surface temperature.
- Electronic stethoscope function detects sound irregularities.
- Readings given on green-yellow-red condition scale. Stores up to 10 readings.

### Machine Evaluator Series: Advanced Handheld Data Collector

- Utilizes shock pulse analysis for early detection of bearing damage and marginal lube-film conditions.
- Vibration time-wave form with FFT spectrum.
- Advanced analysis techniques include orbit analysis, bump test and two-channel vibration.
- Upgrade options include shaft balancing and laser alignment.
- RFID tags for read/write capability.

### Predictive Maintenance Turnkey Program

Timken can work with customers to define their reliability needs and customize solutions. Let us manage your predictive maintenance program and deliver tangible results or use your own staff to implement our solution.

- Program design.
- Program startup.
- Hardware setup.
- World-class training.

### Predictive Maintenance Services

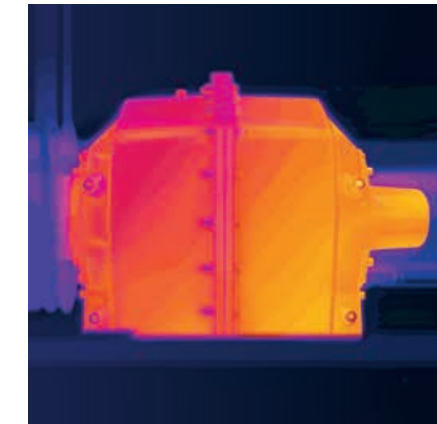
- Vibration analysis.
- Infrared thermography.
- Oil and wear particle analysis.
- Balancing and alignment.
- Electric motor testing.
- Ultrasonic testing.
- Video imaging.
- Operating Deflection Shape/Modal Analysis.

### Remote Monitoring



Your predictive maintenance program should be more than just data collection. Timken remote monitoring services analyzes data, which leads to process improvements.

- Automated monitoring of your critical equipment 24/7/365.
- Wireless data transmission of vibration, temperature, speed and others.
- Outsourced expert diagnostic analysis available.
- Advanced Web-based analysis software.



### Reliability Consulting

To improve asset reliability, you need to develop a sustainable reliability culture. Timken works with you to develop a specific strategy that leverages strengths for your equipment and your company's needs.

Our reliability consulting services include:

- RCM2.
- Asset hierarchy and prioritization.
- Process services.
- Root-cause analysis.

Our reliability consulting services help companies achieve:

- High revenues.
- Optimize part output.
- Increase consistency and product quality.
- Improve customer satisfaction.
- Enhance safety and environmental integrity.

### The Intellinova® System: Online Condition Monitoring for Sophisticated Analysis

- Advanced programming.
- An online monitoring solution for vibration and process parameters.
- Suitable for most difficult-to-monitor applications, such as cranes, rolling mills and wind mills.